

4

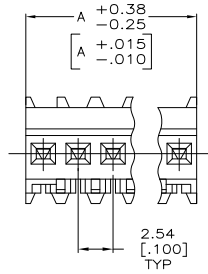
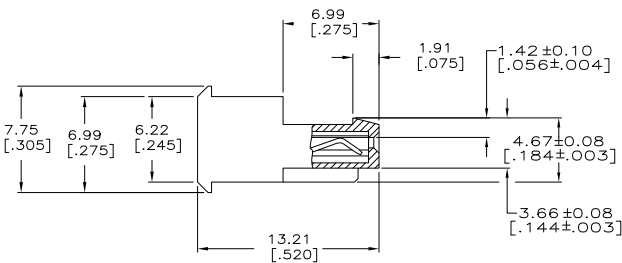
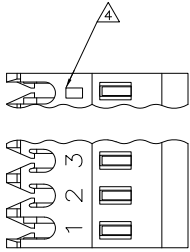
3

2

1

THIS DRAWING IS UNPUBLISHED. RELEASED FOR PUBLICATION  
 © COPYRIGHT BY TYCO ELECTRONICS CORPORATION. ALL RIGHTS RESERVED.

LOC	DIST	REVISIONS					
CM	00	F	LNK	DESCRIPTION	DATE	BY	APP'D
		B		REVISION PER ECO-07-003724	23FEB07	KW	DB
		B1		REVISED PER ECO-09-023313	12OCT09	KK	AEG



LEAD FREE	38.10 [1.500]	15	4-644575-5
	35.56 [1.400]	14	4-644575-4
	33.02 [1.300]	13	4-644575-3
	30.48 [1.200]	12	4-644575-2
	27.94 [1.100]	11	4-644575-1
	25.40 [1.000]	10	4-644575-0
	22.86 [.900]	9	3-644575-9
	20.32 [.800]	8	3-644575-8
	17.78 [.700]	7	3-644575-7
	15.24 [.600]	6	3-644575-6
	12.70 [.500]	5	3-644575-5
	10.16 [.400]	4	3-644575-4
	7.62 [.300]	3	3-644575-3
	5.08 [.200]	2	3-644575-2

CONTAINS LEAD	38.10 [1.500]	15	4-644575-5
	35.56 [1.400]	14	4-644575-4
	33.02 [1.300]	13	4-644575-3
	30.48 [1.200]	12	4-644575-2
	27.94 [1.100]	11	4-644575-1
	25.40 [1.000]	10	4-644575-0
	22.86 [.900]	9	4-644575-9
	20.32 [.800]	8	4-644575-8
	17.78 [.700]	7	4-644575-7
	15.24 [.600]	6	4-644575-6
	12.70 [.500]	5	4-644575-5
	10.16 [.400]	4	4-644575-4
	7.62 [.300]	3	4-644575-3
	5.08 [.200]	2	4-644575-2

DIM A	NO. OF POSN	ASSEMBLY
-------	-------------	----------

△ MATERIAL: CONNECTOR-NYLON UL94V-0 (BLACK)  
 CONTACTS-0.30 [.012] THICK COPPER ALLOY  
 BRIGHT TIN-LEAD 0.00203 [.000080] MIN THICK FOR CONTACTS  
 644575-2 THRU 1-644575-5  
 MATTE WHISKER MITIGATED TIN PLATE 0.00203 [.000080] MIN THICK  
 OVER 0.00076 [.000030] MIN THICK NICKEL FOR CONTACTS  
 3-644575-2 THRU 4-644575-5

2. CONTACTS ACCEPT 22 AWG WIRE WITH 1.52 [.060] MAX INSULATION DIAMETER.

3. CONTACTS MUST ACCEPT 0.64±0.03 [.025±.001] SQUARE POST AND REMAIN LOCKED IN POSITION.

△ IDENTIFICATION NUMBER FOR LAST CIRCUIT MAY NOT APPEAR ON ALL ASSEMBLIES.

5. DIMENSIONS IN BRACKETS ARE IN INCHES.

6. HOUSING FEATURES ARE: FEED THRU WITH LOCKING RAMP.

△ OBSOLETE PARTS: OBSOLETE CIS STREAMLINING PER D.RENAUD/D.SINISI

**METRIC**

THIS DRAWING IS A CONTROLLED DOCUMENT.

DRW: S. HOOVER 03-DEC-2004	Tyco Electronics Corporation
CHK: D. BOSSI 03-DEC-2004	Harrisburg, Pa 17105-3608
APP: D. BOSSI 03-DEC-2004	MTA .100 CONNECTOR ASSEMBLY
PRODUCT SPEC: 108-1050	22 AWG, UL94V-0, SPECIAL
APPLICATION SPEC: 114-1019	SIZE: CASE CODE: DRAWING NO:
WEIGHT:	A2 00779 C-644575
MATERIAL: △	CUSTOMER DRAWING
FINISH: △	SCALE: 5:1 SHEET 1 OF 1 REV B1