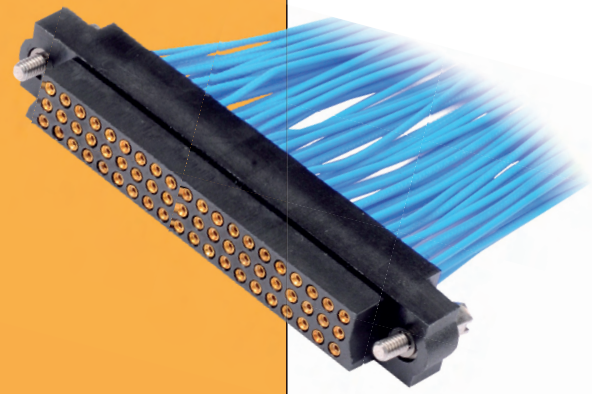


# M83 Datamate Connectors

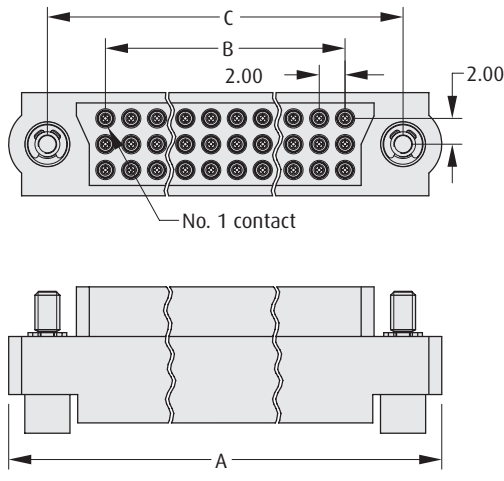
## Female Crimp



- ❖ Choice of compatible jackscrews.
- ❖ All contacts are gold finish for full RoHS compliance.
- ❖ See page 71 for configurations including special contacts.
- ❖ Contact [datamate@harwin.com](mailto:datamate@harwin.com) for alternative contact configurations.
- ❖ Spare contacts are available – see page 16.

### FEMALE CRIMP

### CALCULATION



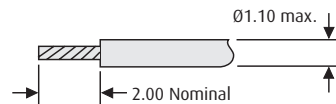
<b>A</b>	$B + 15$
<b>B</b>	$(\text{Total No. of contacts} - 3) \times 2/3$
<b>C</b>	$B + 9$

Diagram shown with Jackscrew F2 assembled.

### TOOLS

**Recommended Crimp Tool** – M22520/2-01  
**Positioner** – T5747  
**Contact Insertion/Removal Tool** – Z80-280  
 See pages 77 to 79  
 ❖ Instruction sheets available at [www.harwin.com/downloads/instructions](http://www.harwin.com/downloads/instructions)

### WIRE STRIPPING DETAILS



### HOW TO ORDER

**M83 - LF XX XX N XX - 0000 - 000**

**SERIES CODE**

**CRIMPS**

<b>C1</b>	Small Bore
<b>D1</b>	Large Bore

**TOTAL NO. OF CONTACTS**

**18,27,36,51,54,60,72,96**

**JACKSCREW**

<b>00</b>	No Jackscrew
<b>Fx</b>	Female Jackscrews – see page 64

All dimensions in mm.

[www.harwin.com](http://www.harwin.com)

