

# Customer Information Sheet

DRAWING No.: M80-889XXXX SHEET 2 OF 2 IF IN DOUBT - ASK © NOT TO SCALE THIRD ANGLE PROJECTION ALL DIMENSIONS IN mm

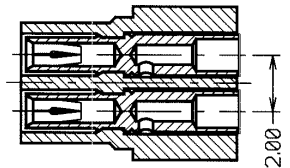
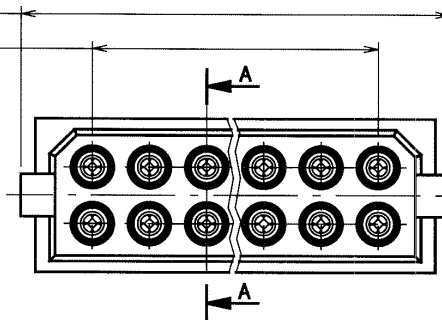
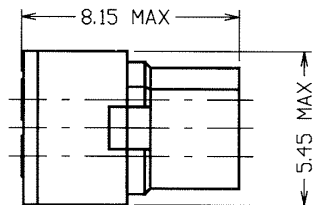
2.00 x No. OF WAYS PER ROW + 3.15 MAX

2.00 x No. OF PITCHES PER ROW

COMMERCIAL ORDER CODE:  
**M80-889XXXX**

TOTAL No. OF WAYS  
04, 06, 08, 10, 12, 14, 16,  
18, 20, 26, 34

FINISH  
01 - GOLD CLIP, TIN SHELL  
05 - GOLD CLIP, GOLD SHELL  
T6 - TIN CLIP, TIN SHELL

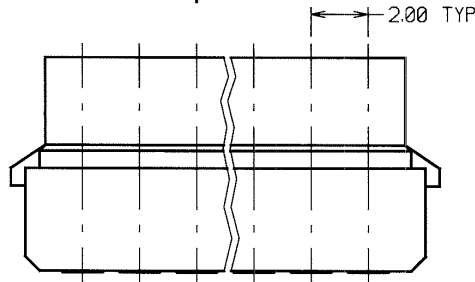


SECTION A-A

BRITISH STANDARD ORDER CODE: TO BS9525 F0033  
**B5740-2XX-F-D-X**

TOTAL No. OF WAYS  
04, 06, 08, 10, 12, 14, 16,  
18, 20, 26, 34

FINISH  
0 - GOLD CLIP, TIN SHELL  
2 - GOLD CLIP, GOLD SHELL



**SPECIFICATIONS:**

**MATERIAL:**  
MOULDING - GLASS-FILLED POLYESTER UL94V-0  
CLIP - BERYLLIUM COPPER  
SHELL - BRASS

**FINISH:**  
**CONTACTS:**  
01 - 0.30µ GOLD CLIP, 4.0µ TIN SHELL  
05 - 0.30µ GOLD CLIP, 0.20µ GOLD SHELL  
T6 - 1.3µ 90/10 TIN/LEAD CLIP, 4.0µ TIN SHELL

**MECHANICAL:**  
DURABILITY - 500 OPERATIONS  
INSERTION FORCE - 2.8N MAX, 1.0N MIN  
WITHDRAWAL FORCE - 1.8N MAX, 0.2N MIN

PACKING:  
BAG (CONTACTS AND MOULDINGS UN-ASSEMBLED)  
FOR COMPLETE SPECIFICATION, SEE COMPONENT SPECIFICATION C005XX (LATEST ISSUE)

**ELECTRICAL:**  
CURRENT RATING AT 25°C - 30A MAX  
CURRENT RATING AT 85°C - 2.2A MAX  
WORKING VOLTAGE - 120V AC/DC  
VOLTAGE PROOF - 300V AC/DC  
CONTACT RESISTANCE (INITIAL) - 20 MILLIOHMS MAX  
CONTACT RESISTANCE (AFTER CONDITIONING) - 25 MILLIOHMS MAX  
INSULATION RESISTANCE (INITIAL) - 1000 MEGOHMS MIN  
INSULATION RESISTANCE (AFTER CONDITIONING) - 100 MEGOHMS MIN

**ENVIRONMENTAL:**  
TEMPERATURE RANGE - -55°C TO +125°C

**NOTES:**

1. RECOMMENDED WIRE TYPE = BS3G210 TYPE A, PTFE INSULATED, 22 AWG. MAX INSULATION DIAMETER = Ø1.10mm, STRIP WIRE BY 2.00mm.
2. RECOMMENDED HAND CRIMP TOOL = M22520/2-01 WITH POSITIONER T5747. ALSO AVAILABLE: PNEUMATIC AND ELECTRICAL CRIMP MACHINES.
3. CONTACT INSERTION & EXTRACTION TOOL = Z80-280
4. REFER TO INSTRUCTION SHEET FOR HAND CRIMP TOOL M22520/2-01 FOR COMPLETE CRIMPING INSTRUCTIONS.

|                              |      |          |        |
|------------------------------|------|----------|--------|
| JMB                          | 9    | 11.07.05 | 8619   |
| NAME                         | ISS. | DATE     | C/NOTE |
| APPROVED: <i>[Signature]</i> |      |          |        |
| CHECKED: <i>[Signature]</i>  |      |          |        |
| DRAWN: W. J. BOURNE          |      |          |        |
| CUSTOMER REF.:               |      |          |        |
| ASSEMBLY DRG:                |      |          |        |

**HARWIN**

HARWIN USA  
TEL: 603 893 5376  
FAX: 603 893 5396  
mis@harwin.com

HARWIN Europe (UK)  
TEL: 023 9231 4545  
FAX: 023 9231 4590  
mis@harwin.co.uk

HARWIN Asia  
TEL: +65 6 779 4909  
FAX: +65 6 779 3868  
mis@harwin.com.sg

THIS DRAWING AND ANY INFORMATION OR DESCRIPTIVE MATTER SET OUT HEREON ARE CONFIDENTIAL AND COPYRIGHT PROPERTY OF THE HARWIN GROUP AND MUST NOT BE DISCLOSED, LOANED, COPIED OR USED FOR MANUFACTURING, TENDERING OR FOR ANY OTHER PURPOSE WITHOUT THEIR WRITTEN PERMISSION

**TOLERANCES**  
X. - ±1mm  
X.X - ±0.25mm  
X.XX - ±0.10mm  
X.XXX - ±0.01mm  
ANGLES - ±5°  
UNLESS STATED

**MATERIAL:**  
SEE ABOVE

**FINISH:**  
SEE ABOVE

**S/AREA:**  
mm<sup>2</sup>

**TITLE:** DATAMATE 2mm PITCH CRIMP DIL SOCKET ASSEMBLY LARGE BORE (22 AWG)

**DRAWING NUMBER:**  
**M80-889XXXX**

SHT 2 OF 2