

PART NUMBER CODING
SFH213-PP-C-D- -ID-BK

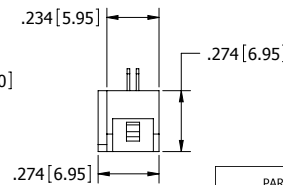
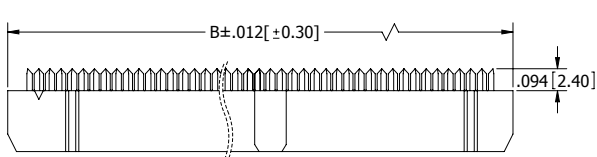
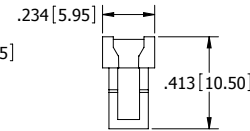
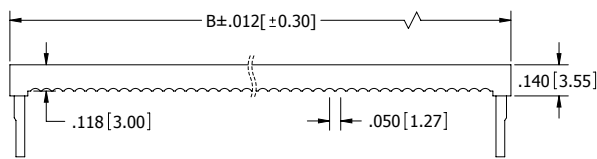
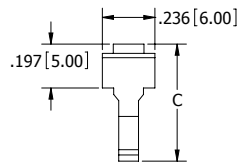
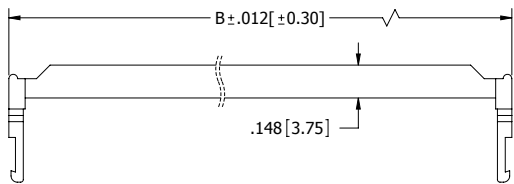
COLOR
BK= BLACK

NUMBER OF POSITIONS
(CONTACTS PER ROW)

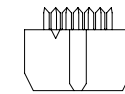
PLATING
(SEE PLATING TABLE)

PLATING TABLE	
CONTACT SURFACE	TERMINATION
P = GOLD FLASH	GOLD FLASH
V = GOLD FLASH	NICKEL
K = .000015" GOLD	NICKEL
J = .000015" GOLD	GOLD FLASH
E = .000100" PURE TIN, MATTE	.000100" PURE TIN, MATTE

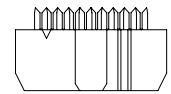
REVISIONS				
REV.	ECO. NO	DESCRIPTION	DATE	BY
A	1930	INITIAL RELEASE	3/17/2009	JH



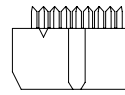
(POSITION 07 THRU 25)



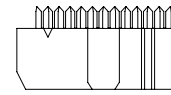
(POSITION 03)



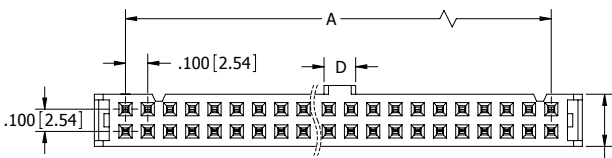
(POSITION 05)



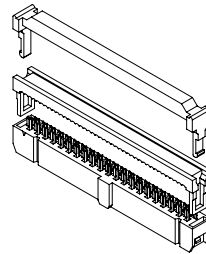
(POSITION 04)



(POSITION 06)



.234 [5.95]



- NOTES:
- INSULATOR MATERIAL: PBT 30% GLASS FIBER.
 - CONTACT MATERIAL: PHOSPHOR BRONZE.
 - OPERATING TEMPERATURE: -40 °C TO +105 °C.
 - UL FLAMMABILITY RATING: 94V-0.
 - CURRENT RATING: 1 AMP.
 - INSULATION RESISTANCE: 3,000M OHMS MIN.
 - CONTACT RESISTANCE: 30m OHMS MAX.
 - DIELECTRIC WITHSTANDING: 500 VAC.
 - MATES WITH SBH11 SERIES
 - FOR 1.27mm PITCH FLAT RIBBON CABLE.

PART NUMBER	POSITIONS/ CONTACTS	A		B		C		D	
		INCH	MM	INCH	MM	INCH	MM	INCH	MM
SFH213-PP-C-D03-ID-BK	03/06	0.200	5.08	0.480	12.18	0.516	13.10	0.075	1.90
SFH213-PP-C-D04-ID-BK	04/08	0.300	7.62	0.580	14.72				
SFH213-PP-C-D05-ID-BK	05/10	0.400	10.16	0.680	17.26				
SFH213-PP-C-D06-ID-BK	06/12	0.500	12.70	0.780	19.80				
SFH213-PP-C-D07-ID-BK	07/14	0.600	15.24	0.880	22.34	0.526	13.35		
SFH213-PP-C-D08-ID-BK	08/16	0.700	17.78	0.980	24.88				
SFH213-PP-C-D09-ID-BK	09/18	0.800	20.32	1.080	27.42				
SFH213-PP-C-D10-ID-BK	10/20	0.900	22.86	1.180	29.96				
SFH213-PP-C-D12-ID-BK	12/24	1.100	27.94	1.380	35.04				
SFH213-PP-C-D13-ID-BK	13/26	1.200	30.48	1.480	37.58				
SFH213-PP-C-D15-ID-BK	15/30	1.400	35.56	1.680	42.66	0.526	13.35		
SFH213-PP-C-D17-ID-BK	17/34	1.600	40.64	1.880	47.74			0.142	3.60
SFH213-PP-C-D20-ID-BK	20/40	1.900	48.26	2.180	55.36				
SFH213-PP-C-D25-ID-BK	25/50	2.400	60.96	2.680	68.06				
POSITION 30 & 32:		30/60							
SEE SHEET 2 FOR P/N		32/64							

SEE SHEET 2 FOR DIMENSIONS



RoHS COMPLIANT

UNLESS OTHERWISE SPECIFIED:
DIMENSIONS ARE IN INCHES(MM)
TOLERANCES:
ANGULAR: ±.30°
XX = ±.01 [.3]
XXX = ±.008 [.20]
XXXX = ±.004 [.100]

SURFACE FINISH: 63 Ra
REMOVE ALL BURRS AND SHARP EDGES .010 MAX.
INTERPRET DIMENSIONS AND GEOMETRIC TOLERANCING PER: ANSI Y14.5M-1994

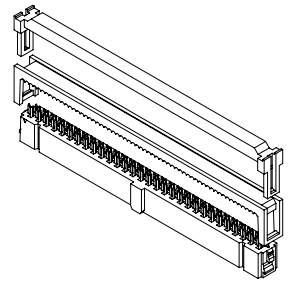
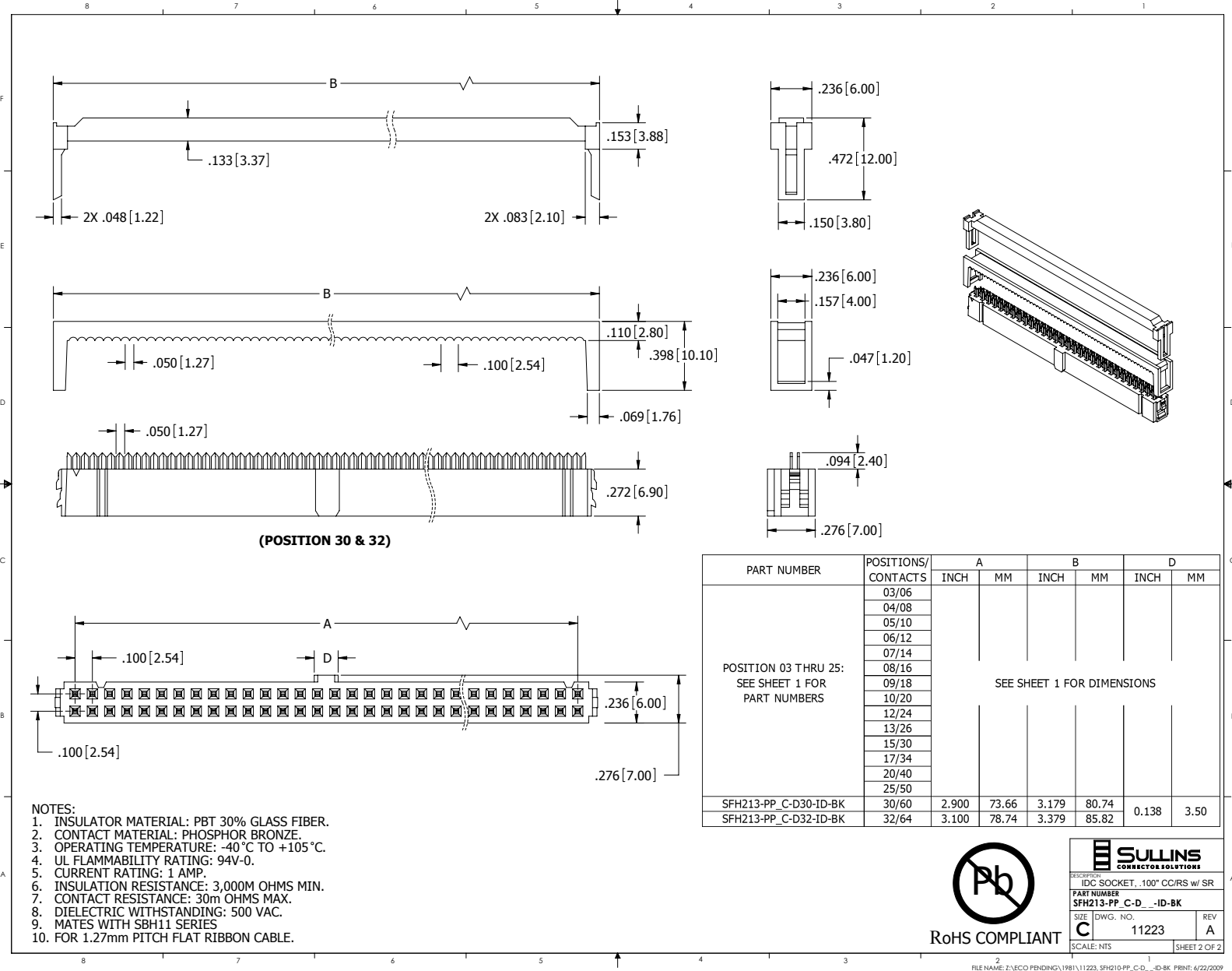
DATE	NAME	REV
02/20/2009	JH	

DESCRIPTION: IDC SOCKET .100" CC/RS, W/ SR

PART NUMBER: SFH213-PP-C-D- -ID-BK



SIZE: C DWG. NO. 11223 REV A

SCALE: NTS SHEET 1 OF 2



PART NUMBER	POSITIONS/ CONTACTS	A		B		D	
		INCH	MM	INCH	MM	INCH	MM
POSITION 03 THRU 25: SEE SHEET 1 FOR PART NUMBERS	03/06	SEE SHEET 1 FOR DIMENSIONS					
	04/08						
	05/10						
	06/12						
	07/14						
	08/16						
	09/18						
	10/20						
	12/24						
	13/26						
	15/30						
	17/34						
	20/40						
	25/50						
	SFH213-PP_C-D30-ID-BK						
SFH213-PP_C-D32-ID-BK	32/64	3.100	78.74	3.379	85.82		

- NOTES:
1. INSULATOR MATERIAL: PBT 30% GLASS FIBER.
 2. CONTACT MATERIAL: PHOSPHOR BRONZE.
 3. OPERATING TEMPERATURE: -40°C TO +105°C.
 4. UL FLAMMABILITY RATING: 94V-0.
 5. CURRENT RATING: 1 AMP.
 6. INSULATION RESISTANCE: 3,000M OHMS MIN.
 7. CONTACT RESISTANCE: 30m OHMS MAX.
 8. DIELECTRIC WITHSTANDING: 500 VAC.
 9. MATES WITH SBH11 SERIES.
 10. FOR 1.27mm PITCH FLAT RIBBON CABLE.

RoHS COMPLIANT

DESCRIPTION: IDC SOCKET, .100" CC/RS w/ SR	
PART NUMBER: SFH213-PP_C-D-ID-BK	
SIZE: C	REV: A
DWG. NO.: 11223	SCALE: NTS
SHEET 2 OF 2	

FILE NAME: Z:\ECO PENDING\1981\11223_SFH210-PP_C-D-ID-BK.PRT; 6/22/2009