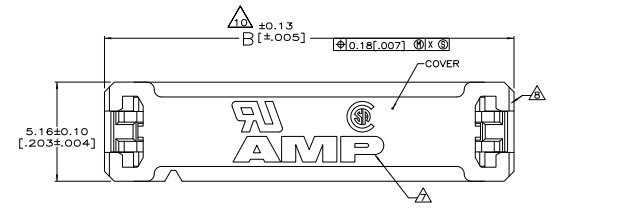
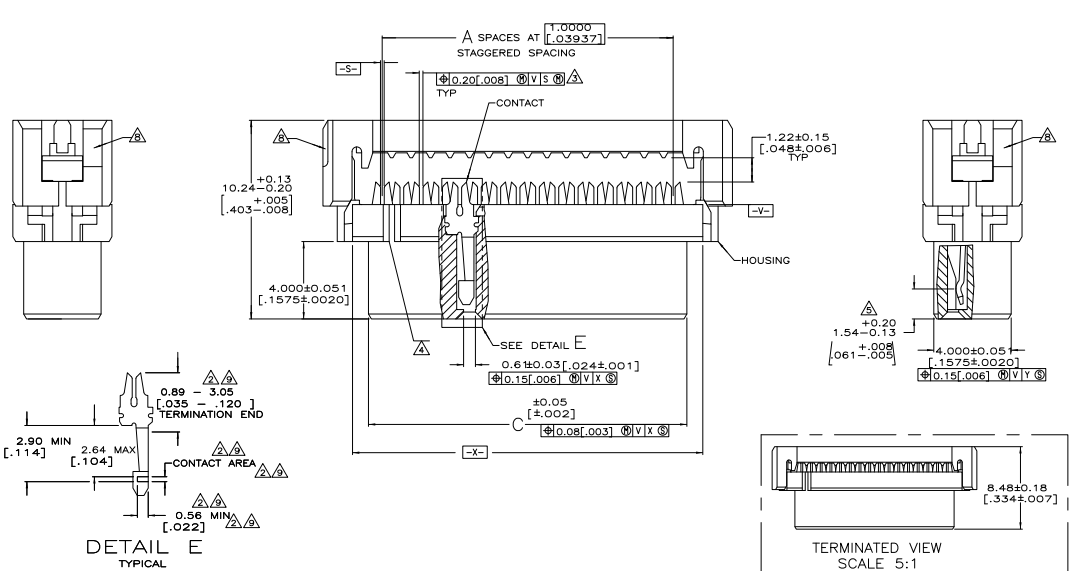


THIS DRAWING IS UNAPPROVED  
 ALL RIGHTS RESERVED

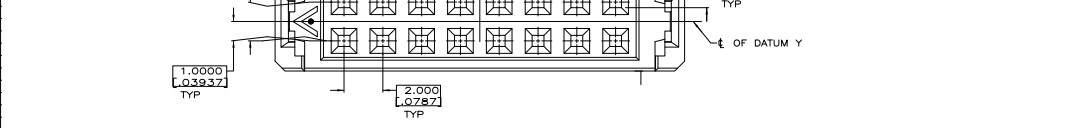
REV	DATE	DESCRIPTION	BY	CHK	APP
00					
01		REVISED PER EDD-11-000033			



- ▲ MOLDED PARTS: POLYESTER, UL RATED 94V-0, BLACK.
- ▲ CONTACTS: BERYLLIUM COPPER.
- ▲ 2.54µm [0.000100] MIN TIN-LEAD ON TERMINATION END.
- ▲ 0.76µm [0.000030] MIN GOLD ON CONTACT AREA, ALL OVER
- ▲ 1.27µm [0.000050] MIN NICKEL.
- ▲ POSITION TOLERANCE APPLIES 0.76 [0.030] ABOVE DATUM V.
- ▲ POSITION NUMBER 1 INDICATOR.
- ▲ ELECTRICAL ENGAGEMENT ZONE.
- 6. RECOMMENDED 28 AWG RIBBON CABLE, 0.61 - 0.97 [0.024 - 0.038] THICK PVC, 1.000 [0.03937] PITCH.
- ▲ AMP LOGO ORIENTATION IS OPTIONAL.
- ▲ RECESS ON EACH END, OPPOSITE CORNER.
- ▲ 0.13µm [0.000005] MIN GOLD ON TERMINATION END.
- ▲ 0.76µm [0.000030] MIN GOLD ON CONTACT AREA, ALL OVER
- ▲ 1.27µm [0.000050] MIN NICKEL.
- ▲ MOLD GATE PROJECTION ON EITHER END OF COVER TO BE EXCLUDED FROM DIMENSION 'B' MEASUREMENT.



REV	DATE	DESCRIPTION	BY	CHK	APP
00					
01		REVISED PER EDD-11-000033			
02					
03					
04					
05					
06					
07					
08					
09					
10					
11					
12					
13					
14					
15					
16					
17					
18					
19					
20					
21					
22					
23					
24					
25					
26					
27					
28					
29					
30					
31					
32					
33					
34					
35					
36					
37					
38					
39					
40					
41					
42					
43					
44					
45					
46					
47					
48					
49					
50					
51					
52					
53					
54					
55					
56					
57					
58					
59					
60					
61					
62					
63					
64					
65					
66					
67					
68					
69					
70					
71					
72					
73					
74					
75					
76					
77					
78					
79					
80					
81					
82					
83					
84					
85					
86					
87					
88					
89					
90					
91					
92					
93					
94					
95					
96					
97					
98					
99					
100					



CONTACT FINISH	D	C	B	A	NO OF POSN	PART NO

THIS DRAWING IS A CONTROLLED DOCUMENT. DATE: 02-21-82. DRAWING NO: 100779. REV: 01. PART NO: 111626. CUSTOMER DRAWING.