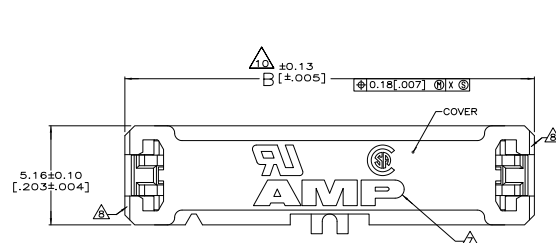
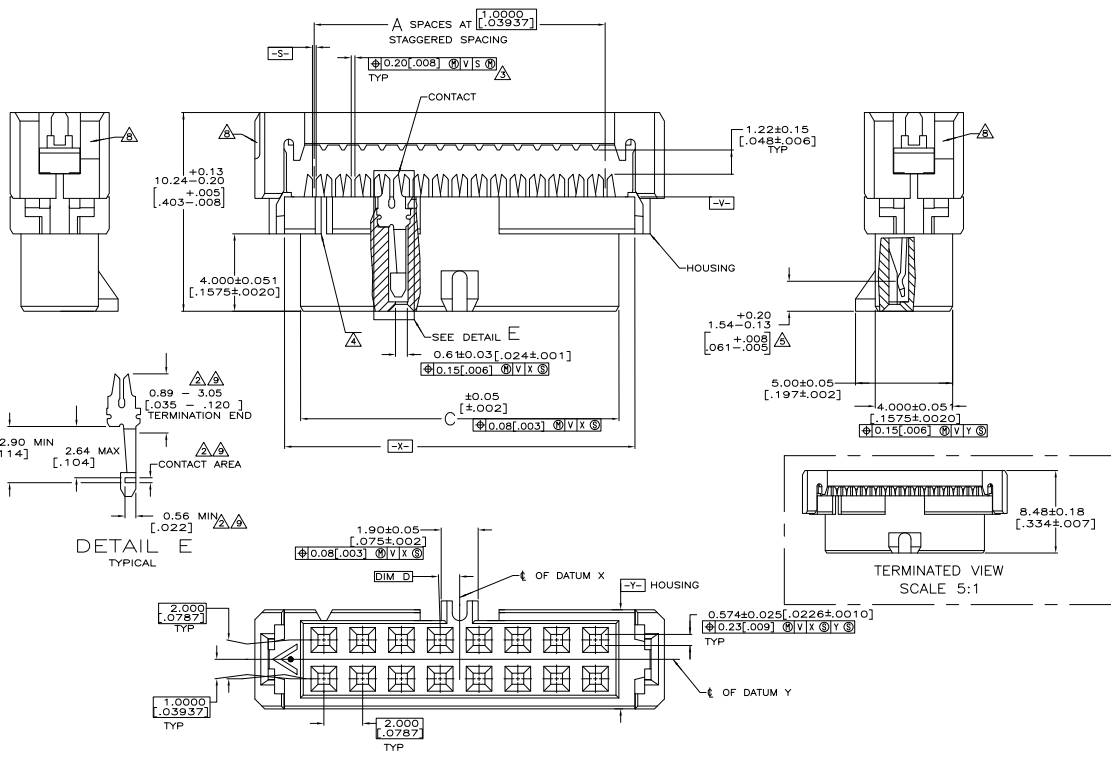


REV	DATE	DESCRIPTION	BY	CHK	APP
00					
01		REVISED PER EDD-11-005033			



- ▲ MOLDED PARTS: POLYESTER, UL RATED 94V-0, BLACK.
- ▲ CONTACTS: BERYLLIUM COPPER.
- ▲ 2.54µm [.00100] MIN TIN-LEAD ON TERMINATION END.
- ▲ 0.76µm [.000030] MIN GOLD ON CONTACT AREA, ALL OVER
- ▲ 1.27µm [.000050] MIN NICKEL.
- ▲ POSITION TOLERANCE APPLIES 0.76 [.030] ABOVE DATUM V.
- ▲ POSITION NUMBER 1 INDICATOR.
- ▲ ELECTRICAL ENGAGEMENT ZONE.
- 6. RECOMMENDED 28 AWG RIBBON CABLE, 0.61 - 0.97 [.024 - .038]
- ▲ THICK PVC, 1.0000[.03933] PITCH.
- ▲ AMP LOGO ORIENTATION IS OPTIONAL.
- ▲ RECESS ON EACH END, OPPOSITE CORNER.
- ▲ 0.13µm [.000005] MIN GOLD ON TERMINATION END.
- ▲ 0.76µm [.000030] MIN GOLD ON CONTACT AREA, ALL OVER
- ▲ 1.27µm [.000050] MIN NICKEL.
- ▲ MOLD GATE PROJECTION ON EITHER END OF COVER TO BE EXCLUDED FROM DIMENSION 'B' MEASUREMENT.



REV	DATE	DESCRIPTION	BY	CHK	APP
1	12	3-111623-1			
2	8	3-111623-0			
3	7	2-111623-9			
4	21	2-111623-8			
5	33	2-111623-7			
6	24	2-111623-6			
7	49	2-111623-5			
8	43	2-111623-4			
9	39	2-111623-3			
10	30	2-111623-2			
11	25	2-111623-1			
12	19	2-111623-0			
13	15	1-111623-9			
14	13	1-111623-8			
15	9	1-111623-7			
16	10	1-111623-6			
17	7	1-111623-5			
18	21	1-111623-4			
19	67	1-111623-3			
20	63	1-111623-2			
21	64	1-111623-1			
22	59	1-111623-0			
23	49	1-111623-9			
24	43	1-111623-8			
25	39	1-111623-7			
26	33	1-111623-6			
27	29	1-111623-5			
28	23	1-111623-4			
29	19	1-111623-3			
30	15	1-111623-2			
31	13	1-111623-1			
32	9	1-111623-0			

THIS DRAWING IS A CONTROLLED DOCUMENT. (P) PERSONNEL (C) 21-81

REVISIONS: 108-1372

RECEPTACLE ASSY, POLARIZED, 2mm CL AMP-LATCH

DATE: 10/779 (C=111623)

CUSTOMER DRAWING