

4

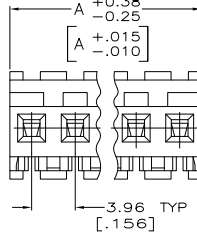
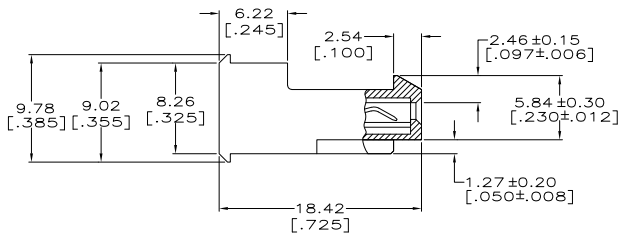
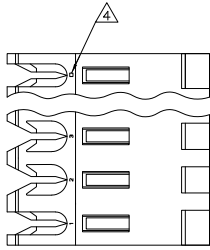
3

2

1

THIS DRAWING IS UNPUBLISHED. RELEASED FOR PUBLICATION.
 © COPYRIGHT BY TYCO ELECTRONICS CORPORATION. ALL RIGHTS RESERVED.

LOC	DIST	REVISIONS				
CM	O	F	LR	DATE	BY	APPD
		K	ECO-07-012878	20JUN07	KW	DB
		K1	REVISED PER ECO-09-023313	13OCT09	KK	AEG



TIN	95.10	[3.744]	24	5-641168-4	
	91.14	[3.588]	23	5-641168-3	
	87.17	[3.432]	22	5-641168-2	
	83.21	[3.276]	21	5-641168-1	
	79.25	[3.120]	20	5-641168-0	
	75.29	[2.964]	19	4-641168-9	
	71.32	[2.808]	18	4-641168-8	
	67.36	[2.652]	17	4-641168-7	
	63.40	[2.496]	16	4-641168-6	
	59.44	[2.340]	15	4-641168-5	
	55.47	[2.184]	14	4-641168-4	
	51.51	[2.028]	13	4-641168-3	
	47.55	[1.872]	12	4-641168-2	
	43.59	[1.716]	11	4-641168-1	
	39.62	[1.560]	10	4-641168-0	
	35.66	[1.404]	9	3-641168-9	
	31.70	[1.248]	8	3-641168-8	
	27.74	[1.092]	7	3-641168-7	
	23.77	[.936]	6	3-641168-6	
	19.81	[.780]	5	3-641168-5	
	15.85	[.624]	4	3-641168-4	
	11.89	[.468]	3	3-641168-3	
	7.92	[.312]	2	3-641168-2	
SUPERSEDED	95.10	[3.744]	24	2-641168-4	
	91.14	[3.588]	23	2-641168-3	
	87.17	[3.432]	22	2-641168-2	
	83.21	[3.276]	21	2-641168-1	
	79.25	[3.120]	20	2-641168-0	
	75.29	[2.964]	19	1-641168-9	
	71.32	[2.808]	18	1-641168-8	
	67.36	[2.652]	17	1-641168-7	
	63.40	[2.496]	16	1-641168-6	
	59.44	[2.340]	15	1-641168-5	
	55.47	[2.184]	14	1-641168-4	
	51.51	[2.028]	13	1-641168-3	
	47.55	[1.872]	12	1-641168-2	
	43.59	[1.716]	11	1-641168-1	
	39.62	[1.560]	10	1-641168-0	
	35.66	[1.404]	9	641168-9	
	31.70	[1.248]	8	641168-8	
	27.74	[1.092]	7	641168-7	
	23.77	[.936]	6	641168-6	
	19.81	[.780]	5	641168-5	
	15.85	[.624]	4	641168-4	
	11.89	[.468]	3	641168-3	
	7.92	[.312]	2	641168-2	
CONTACT FINISH				NO. OF CIRCUITS	PART NO.
	DIM A				

- △ MATERIAL:
CONNECTOR - NYLON UL94V-2 (ORANGE).
CONTACTS - 0.30[.012] THICK COPPER ALLOY.
PLATING - 0.00038[.000015] GOLD IN CONTACT AREA.
0.00203[.000080] MIN THICKNESS BRIGHT TIN LEAD IN SLOT AREA FOR 641168-2 THRU 2-641168-4 OR MATTE WHISKER MITIGATED TIN IN SLOT AREA FOR 3-641168-2 THRU 5-641168-4 OVER NICKEL UNDERPLATE.
- 2. CONTACTS ACCEPT 18 AWG WIRE WITH 2.41[.095] MAX INSULATION DIAMETER.
- 3. CONTACTS MUST ACCEPT 1.14±0.03[.045±.001] SQUARE POST AND REMAIN LOCKED IN POSITION.
- △ IDENTIFICATION NUMBER FOR LAST CIRCUIT MAY NOT APPEAR ON ALL ASSEMBLIES.
- 5. DIMENSIONS IN BRACKETS ARE IN INCHES.
- 6. HOUSING FEATURES ARE: FEED-THRU WITH LOCKING RAMP.
- △ NOTE DELETED.
- △ NOTE DELETED.

△ OBSOLETE PARTS: OBSOLETE CIS STREAMLINING PER D.RENAUD/D.SINISI



THIS DRAWING IS A CONTROLLED DOCUMENT. DIM B. LEWIS 2-12-91
 DIM C. SWING 2-20-91
 DIM D. NAME
 DIM E. PRODUCT SPEC
 DIM F. APPLICATION SPEC
 DIM G. WEIGHT

TYCO ELECTRONICS CORPORATION
 Harrisburg, Pa 17105-3608

MTA-156 CONNECTOR ASSEMBLY,
 18 AWG, STANDARD

SIZE CASE CODE DRAWING NO
 A2 00779 C-641168

CUSTOMER DRAWING SCALE 4:1 SHEET 1 OF 1 REV K1

AMP 1471-9 REV 31MM2000