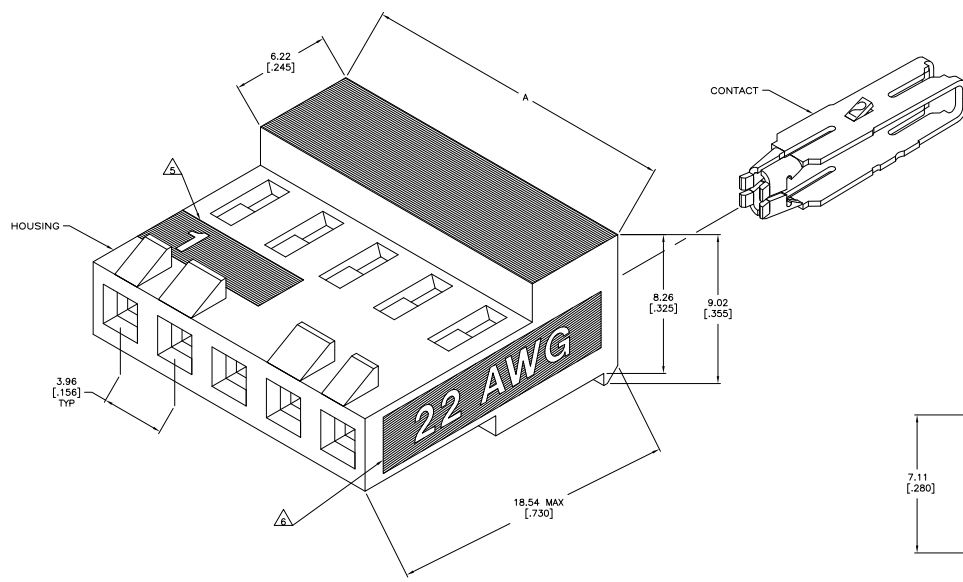
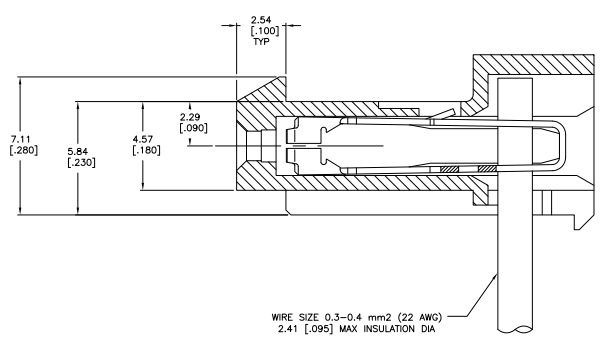


THIS DRAWING IS UNPUBLISHED AND NOT TO BE REPRODUCED OR TRANSMITTED IN ANY FORM OR BY ANY MEANS, ELECTRONIC OR MECHANICAL, INCLUDING PHOTOCOPYING, RECORDING, OR BY ANY INFORMATION STORAGE AND RETRIEVAL SYSTEM. ALL RIGHTS RESERVED.

REV	DATE	DESCRIPTION	BY	CHK	APP
D	E00-07-012895		23AP07	KW	DB
D1	REVISED PER E00-09-024717		03DEC09	KK	AEC



1. OPERATING TEMPERATURE: -55° C TO 105° C.
- △ MATERIAL: HOUSING, NYLON 6/6, UL 94V-0, BLACK CONTACT, 0.30 [.012] THICK COPPER ALLOY
- △ FINISH: BRIGHT TIN-LEAD PLATE 0.00203-0.00508 [.000080-0.00200"] THICK OR MATTE WHISKER MITIGATED TIN 0.00203 [.000080] MIN THICKNESS OVER NICKEL UNDERPLATE.
4. LUBRICATED WITH AMP ANTI-FRETTING LUBRICANT.
- △ IDENTIFICATION NUMBER FOR FIRST CIRCUIT.
- △ WIRE GAUGE IDENTIFICATION
7. DIMENSIONS IN BRACKETS ARE IN INCHES.
- △ CONTACT MUST ACCEPT 1.14±0.03 [.045±.001] SQUARE POST AND REMAINED LOCKED IN POSITION.
- △ OBSOLETE PARTS: OBSOLETE CIS STREAMLINING PER D.RENAUD/D.SINIS



TIN	47.55±0.30	(1.872±.012)	12	4-644371-2
TIN	43.59±0.30	(1.716±.012)	11	4-644371-1
TIN	39.62±0.30	(1.560±.012)	10	4-644371-0
TIN	35.66±0.30	(1.404±.012)	9	3-644371-9
TIN	31.70±0.30	(1.248±.012)	8	3-644371-8
TIN	27.74±0.30	(1.092±.012)	7	3-644371-7
TIN	23.77±0.30	(.936±.012)	6	3-644371-6
TIN	19.81±0.30	(.780±.012)	5	3-644371-5
TIN	15.85±0.15	(.624±.006)	4	3-644371-4
TIN	11.89±0.15	(.468±.006)	3	3-644371-3
TIN	7.92±0.15	(.312±.006)	2	3-644371-2
FINISH	A		NO OF CKTS	PART NO

△ SUPERSEDED BY 4-644371-2	TIN-LEAD	47.55±0.30	(1.872±.012)	12	4-644371-2
△ SUPERSEDED BY 4-644371-1	TIN-LEAD	43.59±0.30	(1.716±.012)	11	4-644371-1
△ SUPERSEDED BY 4-644371-0	TIN-LEAD	39.62±0.30	(1.560±.012)	10	4-644371-0
△ SUPERSEDED BY 3-644371-9	TIN-LEAD	35.66±0.30	(1.404±.012)	9	3-644371-9
△ SUPERSEDED BY 3-644371-8	TIN-LEAD	31.70±0.30	(1.248±.012)	8	3-644371-8
△ SUPERSEDED BY 3-644371-7	TIN-LEAD	27.74±0.30	(1.092±.012)	7	3-644371-7
	TIN-LEAD	23.77±0.30	(.936±.012)	6	3-644371-6
	TIN-LEAD	19.81±0.30	(.780±.012)	5	3-644371-5
	TIN-LEAD	15.85±0.15	(.624±.006)	4	3-644371-4
	TIN-LEAD	11.89±0.15	(.468±.006)	3	3-644371-3
	TIN-LEAD	7.92±0.15	(.312±.006)	2	3-644371-2
	FINISH	A		NO OF CKTS	PART NO

THIS DRAWING IS A CONTROLLED DOCUMENT. METRIC ELECTRONICS CORPORATION, Harrisburg, Pa 17105-3608

DESIGNED BY: J. MILLER, DATE: 108-1219, REVISED BY: J. MILLER, DATE: 114-1048

MTA-156 CONNECTOR ASSEMBLY, Q.M.D., 22 AWG, WITH LOCKING RAMP

CUSTOMER DRAWING: A100779, DRAWING NO: G-644371, SIZE: 10:1, SHEET: 1 OF 1

