

4

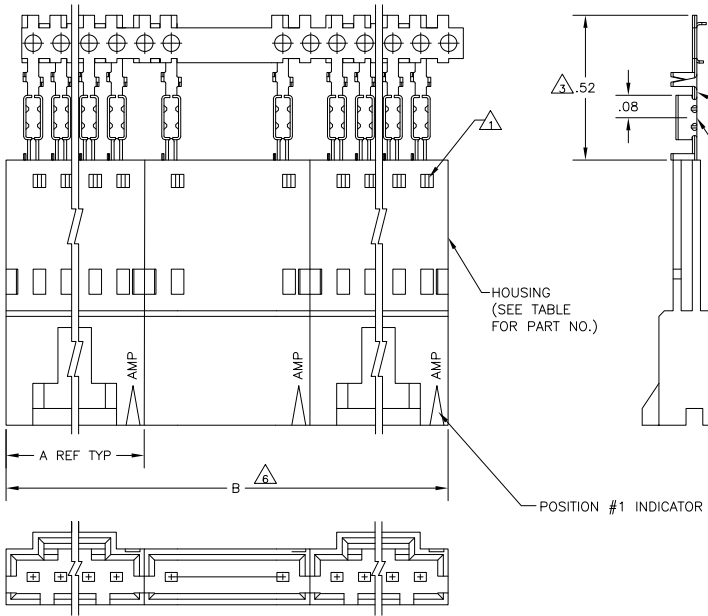
3

2

1

THIS DRAWING IS UNPUBLISHED. RELEASED FOR PUBLICATION. ALL RIGHTS RESERVED.

LOC	DIST	REVISIONS				
AD	00	P	LTR	DATE	BY	APPD
		K2	REVISED PER ECO-11-004820	11MAR11	RK	HMR



△	OBSOLETE	△	2	2.59	1.295	1-103653-1	12	6-103944-1
△	OBSOLETE	△	2	2.39	1.195	1-103653-0	11	6-103944-0
△		△	2	2.19	1.095	103653-9	10	5-103944-9
△		△	2	1.99	.995	103653-8	9	5-103944-8
△		△	2	1.79	.895	103653-7	8	5-103944-7
△		△	3	2.39	.795	103653-6	7	5-103944-6
△		△	2	1.39	.695	103653-5	6	5-103944-5
△		△	4	2.38	.595	103653-4	5	5-103944-4
△		△	4	1.98	.495	103653-3	4	5-103944-3
△		△	5	1.98	.395	103653-2	3	5-103944-2
△		△	8	2.36	.295	103653-1	2	5-103944-1
△		△	3	2.39	.795	103653-6	7	1-103944-3
△		△	4	1.98	.495	103653-3	4	1-103944-2
△		△	2	2.59	1.295	1-103653-1	12	1-103944-1
△	OBSOLETE	△	2	2.39	1.195	1-103653-0	11	1-103944-0
△		△	2	2.19	1.095	103653-9	10	103944-9
△		△	2	1.99	.995	103653-8	9	103944-8
△		△	2	1.79	.895	103653-7	8	103944-7
△		△	3	2.39	.795	103653-6	7	103944-6
△		△	2	1.39	.695	103653-5	6	103944-5
△		△	4	2.38	.595	103653-4	5	103944-4
△		△	4	1.98	.495	103653-3	4	103944-3
△		△	5	1.98	.395	103653-2	3	103944-2
△		△	8	2.36	.295	103653-1	2	103944-1

- △1 CONTACTS ARE LATCHED INTO THE PRELOAD WINDOWS
- △2 USE WITH #22-#26 AWG WIRE SIZE, .054/.030 INSULATION DIAMETER, .015 MAXIMUM INSULATION THICKNESS
- △3 THE DIMENSION APPLIES WITH THE FORWARD PRELOAD STOP IN CONTACT WITH THE HOUSING SURFACE
- △4 POINT OF MEASUREMENT FOR PLATING THICKNESS
- 5 FOR INDIVIDUAL ASSEMBLIES SEE PART NUMBER 103661
- △6 ASSEMBLIES ARE JOINED BY THE CARRIER STRIP. ORDER QUANTITY REFLECTS TOTAL NUMBER OF INDIVIDUAL ASSEMBLIES REQUIRED. SEE TABLE FOR NUMBER OF ASSEMBLIES PER STRIP.
- △7 MATERIAL- HOUSING: FLAME RETARDANT THERMOPLASTIC, COLOR: BLACK PINS: PHOS. BRONZE
- △8 FINISH- PINS: .000100-.000200 BRIGHT TIN-LEAD OVER .000050 NICKEL.
- △9 FINISH- PINS: .000100-.000200 BRIGHT TIN OVER .000050 NICKEL.
- △10 PRELIMINARY PART - NOT RELEASED FOR PRODUCTION.
- △11 FINISH- PINS: .000100-.000200 MATTE TIN OVER .000050 NICKEL.
- △12 OBSOLETE PARTS: OBSOLETE CIS STREAMLINING PER D.RENAUD/D.SINISI

THIS DRAWING IS A CONTROLLED DOCUMENT. **TE** TE Connectivity

DIMENSIONS: INCHES	PLATING: △6 B A	HOUSING PART NUMBER	NO OF POSN	ASSEMBLY PART NUMBER ON STRIP
MATERIAL: △7	FINISH: SEE TABLE	CUSTOMER DRAWING	SCALE: 4:1	SHEET: 1 of 1

APPROVED: R. BROWN, 26JUL00
 CHECKED: K. WRIGHT, 26JUL00
 PRODUCT SPEC: 108-25034
 APPLICATION SPEC: 114-25026
 WEIGHT: 108-25034
 SIZE: 1 CASE CODE (TYPING NO)
 C=103944
 RESTRICTED TO: K2