

4

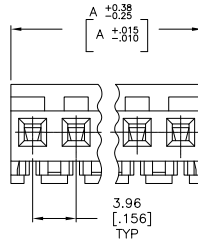
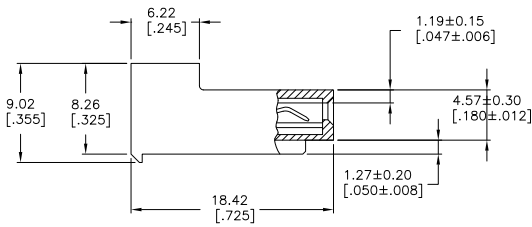
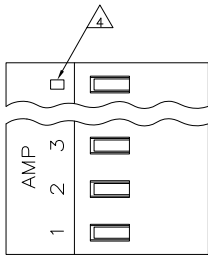
3

2

1

THIS DRAWING IS UNPUBLISHED. RELEASED FOR PUBLICATION. ALL RIGHTS RESERVED.

| LOC | DIST | REVISIONS |                           |         |     |      |
|-----|------|-----------|---------------------------|---------|-----|------|
| CM  | OO   | F         | LWR                       | DATE    | BY  | APPD |
|     |      | S3        | REVISED PER ECO-11-004820 | 11MAR11 | RLK | HMR  |



△ MATERIAL: CONNECTOR - NYLON UL94-V2 (RED)  
CONTACTS - 0.30[.012] THICK COPPER ALLOY  
(BRIGHT TIN-LEAD 0.00203[.000080] MIN. THICK FOR CONTACTS 640433-2 THRU 2-640433-4).  
(MATTE WHISKER MITIGATED TIN 0.00203[.000080] MIN. THICKNESS OVER NICKEL UNDERPLATE FOR 3-640433-2 THRU 5-640433-4).

- CONTACTS ACCEPT 22 AWG WIRE WITH 2.41[.095] MAX INSULATION DIAMETER.
- CONTACTS MUST ACCEPT 1.14±0.03[.045] POST AND REMAIN LOCKED IN POSITION.
- IDENTIFICATION NUMBER FOR LAST CIRCUIT MAY NOT APPEAR ON ALL ASSEMBLIES.
- DIMENSIONS IN BRACKETS ARE IN INCHES.
- HOUSING FEATURES ARE: CLOSED END WITH LOCKING RAMP.
- OBsolete PARTS: OBsolete CIS STREAMLINING PER D.RENAUD/D.SINISI

|       |       |    |                                |
|-------|-------|----|--------------------------------|
| 95.10 | 3.744 | 24 | 5-640433-4                     |
| 91.13 | 3.588 | 23 | 5-640433-3                     |
| 87.17 | 3.432 | 22 | 5-640433-2                     |
| 83.21 | 3.276 | 21 | 5-640433-1                     |
| 79.25 | 3.120 | 20 | 5-640433-0                     |
| 75.29 | 2.964 | 19 | 4-640433-9                     |
| 71.32 | 2.808 | 18 | 4-640433-8                     |
| 67.36 | 2.652 | 17 | 4-640433-7                     |
| 63.40 | 2.496 | 16 | 4-640433-6                     |
| 59.44 | 2.340 | 15 | 4-640433-5                     |
| 55.47 | 2.184 | 14 | 4-640433-4                     |
| 51.51 | 2.028 | 13 | 4-640433-3                     |
| 47.55 | 1.872 | 12 | 4-640433-2                     |
| 43.59 | 1.716 | 11 | 4-640433-1                     |
| 39.62 | 1.560 | 10 | 4-640433-0                     |
| 35.66 | 1.404 | 9  | 3-640433-9                     |
| 31.70 | 1.248 | 8  | 3-640433-8                     |
| 27.74 | 1.092 | 7  | 3-640433-7                     |
| 23.77 | .936  | 6  | 3-640433-6                     |
| 19.81 | .780  | 5  | 3-640433-5                     |
| 15.85 | .624  | 4  | 3-640433-4                     |
| 11.89 | .468  | 3  | 3-640433-3                     |
| 7.92  | .312  | 2  | 3-640433-2                     |
| 95.10 | 3.744 | 24 | 2-640433-4                     |
| 91.13 | 3.588 | 23 | 2-640433-3                     |
| 87.17 | 3.432 | 22 | 2-640433-2                     |
| 83.21 | 3.276 | 21 | 2-640433-1                     |
| 79.25 | 3.120 | 20 | 1-640433-0                     |
| 75.29 | 2.964 | 19 | 1-640433-9                     |
| 71.32 | 2.808 | 18 | 1-640433-8                     |
| 67.36 | 2.652 | 17 | 1-640433-7                     |
| 63.40 | 2.496 | 16 | 1-640433-6                     |
| 59.44 | 2.340 | 15 | 1-640433-5                     |
| 55.47 | 2.184 | 14 | 1-640433-4                     |
| 51.51 | 2.028 | 13 | 1-640433-3                     |
| 47.55 | 1.872 | 12 | 1-640433-2                     |
| 43.59 | 1.716 | 11 | 1-640433-1                     |
| 39.62 | 1.560 | 10 | 1-640433-0                     |
| 35.66 | 1.404 | 9  | 640433-9                       |
| 31.70 | 1.248 | 8  | 640433-8                       |
| 27.74 | 1.092 | 7  | 640433-7                       |
| 23.77 | .936  | 6  | 640433-6                       |
| 19.81 | .780  | 5  | 640433-5                       |
| 15.85 | .624  | 4  | 640433-4                       |
| 11.89 | .468  | 3  | 640433-3                       |
| 7.92  | .312  | 2  | 640433-2                       |
|       |       |    | DIM A NO. OF CIRCUITS PART NO. |

SUPERSEDED

SUPERSEDED

SUPERSEDED

SUPERSEDED

THIS DRAWING IS A CONTROLLED DOCUMENT. DIM S. CARPENTER 13AUG2003  
CHK D. BOSSI 13AUG2003  
D. BOSSI 13AUG2003 NAME  
PRODUCT SPEC 108-1051  
APPLICATION SPEC 114-1020  
SIZE CASE CODE DRAWING NO RESTRICTED TO  
A2 00779 C=640433  
CUSTOMER DRAWING SCALE 4:1 SHEET 1 of 1 REV S3

**TE** TE Connectivity  
MTA 156 CONNECTOR ASSEMBLY,  
22 AWG, STANDARD

**METRIC**