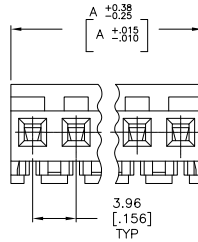
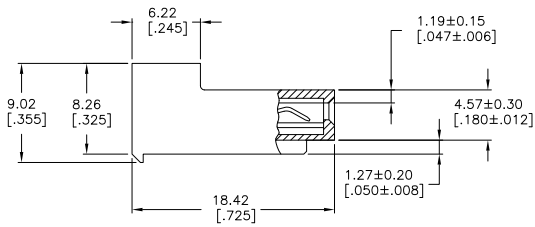
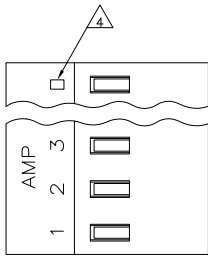


THIS DRAWING IS UNPUBLISHED. RELEASED FOR PUBLICATION. ALL RIGHTS RESERVED.

LOC	DIST	REVISIONS		
F	LNK	DESCRIPTION	DATE	BY
CM	00	S3	REVISED PER ECO-11-004917	11MAR11 RIK HMR



95.10 [3.744]	24	5-640434-4
91.13 [3.588]	23	5-640434-3
87.17 [3.432]	22	5-640434-2
83.21 [3.276]	21	5-640434-1
79.25 [3.120]	20	5-640434-0
75.29 [2.964]	19	4-640434-9
71.32 [2.808]	18	4-640434-8
67.36 [2.652]	17	4-640434-7
63.40 [2.496]	16	4-640434-6
59.44 [2.340]	15	4-640434-5
55.47 [2.184]	14	4-640434-4
51.51 [2.028]	13	4-640434-3
47.55 [1.872]	12	4-640434-2
43.59 [1.716]	11	4-640434-1
39.62 [1.560]	10	4-640434-0
35.66 [1.404]	9	3-640434-9
31.70 [1.248]	8	3-640434-8
27.74 [1.092]	7	3-640434-7
23.77 [0.936]	6	3-640434-6
19.81 [0.780]	5	3-640434-5
15.85 [0.624]	4	3-640434-4
11.89 [0.468]	3	3-640434-3
7.92 [0.312]	2	3-640434-2
95.10 [3.744]	24	2-640434-4
91.13 [3.588]	23	2-640434-3
87.17 [3.432]	22	2-640434-2
83.21 [3.276]	21	2-640434-1
79.25 [3.120]	20	2-640434-0
75.29 [2.964]	19	1-640434-9
71.32 [2.808]	18	1-640434-8
67.36 [2.652]	17	1-640434-7
63.40 [2.496]	16	1-640434-6
59.44 [2.340]	15	1-640434-5
55.47 [2.184]	14	1-640434-4
51.51 [2.028]	13	1-640434-3
47.55 [1.872]	12	1-640434-2
43.59 [1.716]	11	1-640434-1
39.62 [1.560]	10	1-640434-0
35.66 [1.404]	9	640434-9
31.70 [1.248]	8	640434-8
27.74 [1.092]	7	640434-7
23.77 [0.936]	6	640434-6
19.81 [0.780]	5	640434-5
15.85 [0.624]	4	640434-4
11.89 [0.468]	3	640434-3
7.92 [0.312]	2	640434-2
DIM A	NO. OF CIRCUITS	PART NO.

△ MATERIAL: CONNECTOR - NYLON UL94-V2 (WHITE)  
 CONTACTS - 0.30[.012] THICK COPPER ALLOY  
 (BRIGHT TIN-LEAD 0.00203[.000080] MIN. THICK  
 FOR CONTACTS 640434-2 THRU ~~2-640434-4~~);  
 (MATTE WHISKER MITIGATED TIN 0.00203[.000080] MIN.  
 THICKNESS OVER NICKEL UNDERPLATE FOR 3-640434-2  
 THRU 5-640434-4).

- 2. CONTACTS ACCEPT 24 AWG WIRE WITH 2.41[.095] MAX INSULATION DIAMETER.
- 3. CONTACTS MUST ACCEPT 1.14±0.03[.045] POST AND REMAIN LOCKED IN POSITION.
- △ IDENTIFICATION NUMBER FOR LAST CIRCUIT MAY NOT APPEAR ON ALL ASSEMBLIES.
- 5. DIMENSIONS IN BRACKETS ARE IN INCHES.
- 6. HOUSING FEATURES ARE: CLOSED END WITH LOCKING RAMP.
- △ OBSOLETE PARTS: OBSOLETE CIS STREAMLINING PER D.RENAUD/D.SINISI

THIS DRAWING IS A CONTROLLED DOCUMENT. DIM S. CARPENTER 13AUG2003

DIMENSIONS: mm [INCHES]	TOLERANCES UNLESS OTHERWISE SPECIFIED:	DWG. CHK. D. BOSSI 13AUG2003	NAME
Ø PLC ± .01	PLC ± .01	PLC ± .01	MTA 156 CONNECTOR ASSEMBLY, 24 AWG, STANDARD
PLC ± .01	PLC ± .01	PLC ± .01	PRODUCT SPEC. 108-1051
PLC ± .01	PLC ± .01	PLC ± .01	APPLICATION SPEC. 114-1020
PLC ± .01	PLC ± .01	PLC ± .01	SIZE CASE CODE DRAWING NO. A2 00779 C-640434
PLC ± .01	PLC ± .01	PLC ± .01	RESTRICTED TO -
PLC ± .01	PLC ± .01	PLC ± .01	CUSTOMER DRAWING
PLC ± .01	PLC ± .01	PLC ± .01	SCALE 4:1 SHEET 1 of 1 REV S3

TE Connectivity

