

4

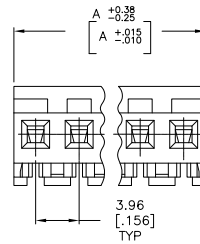
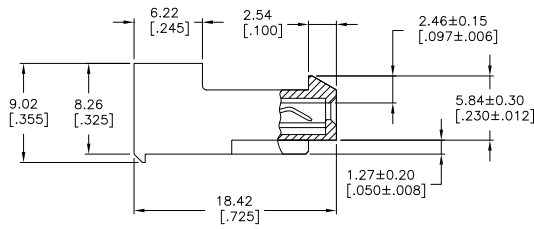
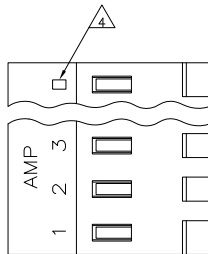
3

2

1

THIS DRAWING IS UNPUBLISHED.  
 RELEASED FOR PUBLICATION  
 ALL RIGHTS RESERVED.

LOC	DIST	REVISIONS				
CM	OO	F	LNK	DATE	BY	APP'D
		T3		REVISED PER ECO-11-004587	11MAR11	RK HMR



⚠ MATERIAL: CONNECTOR - NYLON UL94-V2 (WHITE)  
 CONTACTS - 0.30[.012] THICK COPPER ALLOY  
 (BRIGHT TIN-LEAD 0.00203[.000080] MIN. THICK  
 FOR CONTACTS 640429-2 THRU 640429-4).  
 (MATTE WHISKER MITIGATED TIN 0.00203[.000080] MIN.  
 THICKNESS OVER NICKEL UNDERPLATE FOR 3-640429-2  
 THRU 5-640429-4).

2. CONTACTS ACCEPT 24 AWG WIRE WITH 2.41[.095] MAX INSULATION DIAMETER.

3. CONTACTS MUST ACCEPT 1.14±0.03[.045] POST AND REMAIN LOCKED IN POSITION.

⚠ IDENTIFICATION NUMBER FOR LAST CIRCUIT MAY NOT APPEAR ON ALL ASSEMBLIES.

5. DIMENSIONS IN BRACKETS ARE IN INCHES.

6. HOUSING FEATURES ARE: CLOSED END WITH LOCKING RAMP.

⚠ OBSOLETE PARTS: OBSOLETE CIS STREAMLINING PER D.RENAUD/D.SINISI

95.10[3.744]	24	5-640429-4
91.13[3.588]	23	5-640429-3
87.17[3.432]	22	5-640429-2
83.21[3.276]	21	5-640429-1
79.25[3.120]	20	5-640429-0
75.29[2.964]	19	4-640429-9
71.32[2.808]	18	4-640429-8
67.36[2.652]	17	4-640429-7
63.40[2.496]	16	4-640429-6
59.44[2.340]	15	4-640429-5
55.47[2.184]	14	4-640429-4
51.51[2.028]	13	4-640429-3
47.55[1.872]	12	4-640429-2
43.59[1.716]	11	4-640429-1
39.62[1.560]	10	4-640429-0
35.66[1.404]	9	3-640429-9
31.70[1.248]	8	3-640429-8
27.74[1.092]	7	3-640429-7
23.77[.936]	6	3-640429-6
19.81[.780]	5	3-640429-5
15.85[.624]	4	3-640429-4
11.89[.468]	3	3-640429-3
7.92[.312]	2	3-640429-2
⚠ SUPERCEDED BY 5-640429-4	95.10[3.744]	24 2-640429-4
⚠ SUPERCEDED BY 5-640429-3	91.13[3.588]	23 2-640429-3
⚠ SUPERCEDED BY 5-640429-2	87.17[3.432]	22 2-640429-2
⚠ SUPERCEDED BY 5-640429-1	83.21[3.276]	21 2-640429-1
⚠ SUPERCEDED BY 5-640429-0	79.25[3.120]	20 2-640429-0
⚠ SUPERCEDED BY 4-640429-9	75.29[2.964]	19 1-640429-9
⚠ SUPERCEDED BY 4-640429-8	71.32[2.808]	18 1-640429-8
⚠ SUPERCEDED BY 4-640429-7	67.36[2.652]	17 1-640429-7
⚠ SUPERCEDED BY 4-640429-6	63.40[2.496]	16 1-640429-6
⚠ SUPERCEDED BY 4-640429-5	59.44[2.340]	15 1-640429-5
⚠ SUPERCEDED BY 4-640429-4	55.47[2.184]	14 1-640429-4
⚠ SUPERCEDED BY 4-640429-3	51.51[2.028]	13 1-640429-3
⚠ SUPERCEDED BY 4-640429-2	47.55[1.872]	12 1-640429-2
⚠ SUPERCEDED BY 4-640429-1	43.59[1.716]	11 1-640429-1
⚠ SUPERCEDED BY 4-640429-0	39.62[1.560]	10 1-640429-0
	35.66[1.404]	9 640429-9
⚠ SUPERCEDED BY 3-640429-7	31.70[1.248]	8 640429-8
	27.74[1.092]	7 640429-7
	23.77[.936]	6 640429-6
	19.81[.780]	5 640429-5
	15.85[.624]	4 640429-4
	11.89[.468]	3 640429-3
	7.92[.312]	2 640429-2
		DIM A NO. OF CIRCUITS PART NO.

THIS DRAWING IS A CONTROLLED DOCUMENT.

DIMENSIONS: mm [INCHES]	TOLENCES UNLESS OTHERWISE SPECIFIED: 0 PLC ± . - 1 PLC ± . - 2 PLC ± . - 3 PLC ± 0.13 [.005] 4 PLC ± . - ANGLES FINISH	DRN S. CARPENTER 08A42003 CHK. BOSSI 08A42003 D. BOSSI 08A42003 APPRO. BOSSI 08A42003 PRODUCT SPEC: 108-1051 APPLICATION SPEC: 114-1020 WEIGHT: -	DATE: 11MAR11 BY: RK APP'D: HMR
MATERIAL			



TE Connectivity		TE Connectivity	
MTA 156 CONNECTOR ASSEMBLY, 24 AWG, STANDARD		RESTRICTED TO	
SIZE: A2	CAGE CODE: 00779	DRAWING NO: 640429	REV: T3
CUSTOMER DRAWING		SCALE: 4:1	SHEET 1 of 1