

4

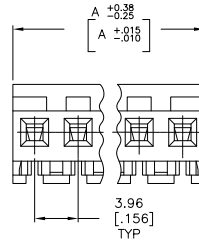
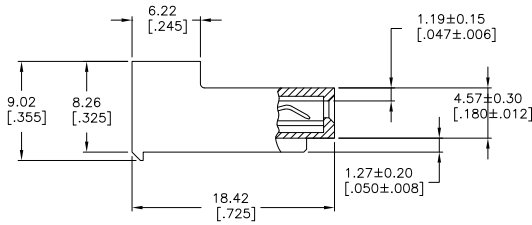
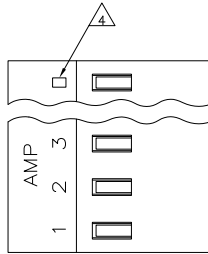
3

2

1

THIS DRAWING IS UNPUBLISHED. RELEASED FOR PUBLICATION  
 © copyright - By - ALL RIGHTS RESERVED.

LOC	DIST	REVISIONS			
F	LNK	DESCRIPTION	DATE	BY	APPD
	N2	REVISED PER ECO-11-004587	11MAR11	RIK	HMR



△ MATERIAL: CONNECTOR - NYLON UL94-V2 (ORANGE)  
 CONTACTS - 0.30 [.012] THICK COPPER ALLOY  
 (BRIGHT TIN-LEAD 0.00203 [.000080] MIN. THICK  
 FOR CONTACTS 640431-2 THRU 2-640431-4).  
 (MATTE WHISKER MITIGATED TIN 0.00203 [.000080] MIN. THICK  
 FOR CONTACTS 3-640431-2 THRU 5-640431-4).

- CONTACTS ACCEPT 18 AWG WIRE WITH 2.41 [.095] MAX INSULATION DIAMETER.
- CONTACTS MUST ACCEPT 1.14±0.03 [.045±.001] POST AND REMAIN LOCKED IN POSITION.
- IDENTIFICATION NUMBER FOR LAST CIRCUIT MAY NOT APPEAR ON ALL ASSEMBLIES.
- DIMENSIONS IN BRACKETS ARE IN INCHES.
- HOUSING FEATURES ARE: CLOSED END WITH LOCKING RAMP.
- OBsolete PARTS: OBsolete CIS STREAMLINING PER D.RENAUD/D.SINISI

95.10 [3.744]	24	5-640431-4	
91.13 [3.588]	23	5-640431-3	
87.17 [3.432]	22	5-640431-2	
83.21 [3.276]	21	5-640431-1	
79.25 [3.120]	20	5-640431-0	
75.29 [2.964]	19	4-640431-9	
71.32 [2.808]	18	4-640431-8	
67.36 [2.652]	17	4-640431-7	
63.40 [2.496]	16	4-640431-6	
59.44 [2.340]	15	4-640431-5	
55.47 [2.184]	14	4-640431-4	
51.51 [2.028]	13	4-640431-3	
47.55 [1.872]	12	4-640431-2	
43.59 [1.716]	11	4-640431-1	
39.62 [1.560]	10	4-640431-0	
35.66 [1.404]	9	3-640431-9	
31.70 [1.248]	8	3-640431-8	
27.74 [1.092]	7	3-640431-7	
23.77 [936]	6	3-640431-6	
19.81 [780]	5	3-640431-5	
15.85 [624]	4	3-640431-4	
11.89 [468]	3	3-640431-3	
7.92 [312]	2	3-640431-2	
△ SUPERCEDED BY 5-640431-4	95.10 [3.744]	24	2-640431-4
△ SUPERCEDED BY 5-640431-3	91.13 [3.588]	23	2-640431-3
△ SUPERCEDED BY 5-640431-2	87.17 [3.432]	22	2-640431-2
△ SUPERCEDED BY 5-640431-1	83.21 [3.276]	21	2-640431-1
△ SUPERCEDED BY 5-640431-0	79.25 [3.120]	20	2-640431-0
△ SUPERCEDED BY 4-640431-9	75.29 [2.964]	19	1-640431-9
△ SUPERCEDED BY 4-640431-8	71.32 [2.808]	18	1-640431-8
63.40 [2.496]	16	1-640431-6	
59.44 [2.340]	15	1-640431-5	
55.47 [2.184]	14	1-640431-4	
51.51 [2.028]	13	1-640431-3	
47.55 [1.872]	12	1-640431-2	
43.59 [1.716]	11	1-640431-1	
39.62 [1.560]	10	1-640431-0	
35.66 [1.404]	9	640431-9	
31.70 [1.248]	8	640431-8	
27.74 [1.092]	7	640431-7	
23.77 [936]	6	640431-6	
19.81 [780]	5	640431-5	
15.85 [624]	4	640431-4	
11.89 [468]	3	640431-3	
7.92 [312]	2	640431-2	
			DIM A NO. OF CIRCUITS PART NO.

640431

A

THIS DRAWING IS A CONTROLLED DOCUMENT.		DRN S. CARPENTER 09AIA2003	DATE 09AIA2003
DIMENSIONS: mm [INCHES]		CHK D. BOSSI 09AIA2003	NAME D. BOSSI
TOLERANCES UNLESS OTHERWISE SPECIFIED:		PRODUCT SPEC 108-1051	
Ø PLC	± .13 [.005]	APPLICATION SPEC 114-1020	
PLC	± .13 [.005]	WEIGHT -	
PLC	± .13 [.005]	SIZE CASE CODE DRAWING NO A2 00779 C=640431	
PLC	± .13 [.005]	RESTRICTED TO -	
PLC	± .13 [.005]	CUSTOMER DRAWING	
PLC	± .13 [.005]	SCALE 4:1 SHEET 1 of 1 REV N2	

METRIC