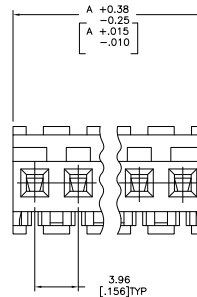
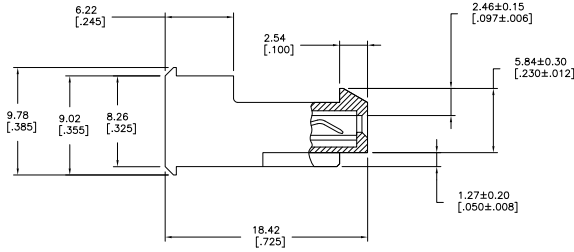
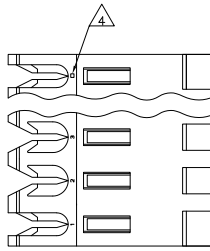


4 3 2 1

THIS DRAWING IS UNPUBLISHED. RELEASED FOR PUBLICATION. ALL RIGHTS RESERVED.

LOC	DIST	REV	DESCRIPTION	DATE	BY	APP'D
CM	00	F	LWR			
		S2	REVISED PER ECO-11-004587	11MAR11	RK	HMR



MATERIAL: CONNECTOR - NYLON UL94-V2 (ORANGE)  
CONTACTS - 0.30[.012] THICK COPPER ALLOY  
(BRIGHT TIN-LEAD 0.00203[.000080] MIN. THICK  
FOR CONTACTS 640599-2 THRU 2-640599-4)  
(MATTE WHISKER MITGATED TIN 0.00203[.000080] MIN  
THICKNESS OVER NICKEL UNDERPLATE FOR  
3-640599-2 THRU 5-640599-4).

2. CONTACTS ACCEPT 18 AWG WIRE WITH 2.41[.095] MAX INSULATION DIAMETER.
  3. CONTACTS MUST ACCEPT 1.14±0.03[.045±.001] SQUARE POST AND REMAIN LOCKED IN POSITION.
  4. IDENTIFICATION NUMBER FOR LAST CIRCUIT MAY NOT APPEAR ON ALL ASSEMBLIES.
  5. DIMENSIONS IN BRACKETS ARE IN INCHES.
  6. HOUSING FEATURES ARE: FEED-THRU WITH LOCKING RAMP.
- OBSELETE PARTS: OBSELETE CIS STREAMLINING PER D.RENAUD/D.SINISI

95.10[3.744]	24	5-640599-4
91.13[3.588]	23	5-640599-3
87.17[3.432]	22	5-640599-2
83.21[3.276]	21	5-640599-1
79.25[3.120]	20	5-640599-0
75.29[2.964]	19	4-640599-9
71.32[2.808]	18	4-640599-8
67.36[2.652]	17	4-640599-7
63.40[2.496]	16	4-640599-6
59.44[2.340]	15	4-640599-5
55.47[2.184]	14	4-640599-4
51.51[2.028]	13	4-640599-3
47.55[1.872]	12	4-640599-2
43.59[1.716]	11	4-640599-1
39.62[1.560]	10	4-640599-0
35.66[1.404]	9	3-640599-9
31.70[1.248]	8	3-640599-8
27.74[1.092]	7	3-640599-7
23.77[.936]	6	3-640599-6
19.81[.780]	5	3-640599-5
15.85[.624]	4	3-640599-4
11.89[.468]	3	3-640599-3
7.92[.312]	2	3-640599-2
<del>95.10[3.744]</del>	<del>24</del>	<del>2-640699-4</del>
<del>91.13[3.588]</del>	<del>23</del>	<del>2-640699-3</del>
<del>87.17[3.432]</del>	<del>22</del>	<del>2-640699-2</del>
<del>83.21[3.276]</del>	<del>21</del>	<del>2-640699-1</del>
<del>79.25[3.120]</del>	<del>20</del>	<del>2-640699-0</del>
<del>75.29[2.964]</del>	<del>19</del>	<del>1-640599-9</del>
<del>71.32[2.808]</del>	<del>18</del>	<del>1-640599-8</del>
<del>67.36[2.652]</del>	<del>17</del>	<del>1-640599-7</del>
<del>63.40[2.496]</del>	<del>16</del>	<del>1-640599-6</del>
<del>59.44[2.340]</del>	<del>15</del>	<del>1-640599-5</del>
<del>55.47[2.184]</del>	<del>14</del>	<del>1-640599-4</del>
<del>51.51[2.028]</del>	<del>13</del>	<del>1-640599-3</del>
<del>47.55[1.872]</del>	<del>12</del>	<del>1-640599-2</del>
<del>43.59[1.716]</del>	<del>11</del>	<del>1-640599-1</del>
<del>39.62[1.560]</del>	<del>10</del>	<del>1-640599-0</del>
<del>35.66[1.404]</del>	<del>9</del>	<del>640599-9</del>
<del>31.70[1.248]</del>	<del>8</del>	<del>640599-8</del>
<del>27.74[1.092]</del>	<del>7</del>	<del>640599-7</del>
<del>23.77[.936]</del>	<del>6</del>	<del>640599-6</del>
<del>19.81[.780]</del>	<del>5</del>	<del>640599-5</del>
<del>15.85[.624]</del>	<del>4</del>	<del>640599-4</del>
<del>11.89[.468]</del>	<del>3</del>	<del>640599-3</del>
<del>7.92[.312]</del>	<del>2</del>	<del>640599-2</del>

△ SUPERSEDED BY 5-640599-4 95.10[3.744] 24 2-640699-4  
△ SUPERSEDED BY 5-640599-3 91.13[3.588] 23 2-640699-3  
△ SUPERSEDED BY 5-640599-2 87.17[3.432] 22 2-640699-2  
△ SUPERSEDED BY 5-640599-1 83.21[3.276] 21 2-640699-1  
△ SUPERSEDED BY 5-640599-0 79.25[3.120] 20 2-640699-0  
△ SUPERSEDED BY 4-640599-9 75.29[2.964] 19 1-640599-9  
△ SUPERSEDED BY 4-640599-8 71.32[2.808] 18 1-640599-8  
△ SUPERSEDED BY 4-640599-7 67.36[2.652] 17 1-640599-7  
△ SUPERSEDED BY 4-640599-6 63.40[2.496] 16 1-640599-6  
△ SUPERSEDED BY 4-640599-5 59.44[2.340] 15 1-640599-5  
△ SUPERSEDED BY 4-640599-4 55.47[2.184] 14 1-640599-4  
△ SUPERSEDED BY 4-640599-3 51.51[2.028] 13 1-640599-3  
△ SUPERSEDED BY 4-640599-2 47.55[1.872] 12 1-640599-2  
△ SUPERSEDED BY 4-640599-1 43.59[1.716] 11 1-640599-1  
△ SUPERSEDED BY 4-640599-0 39.62[1.560] 10 1-640599-0

△ SUPERSEDED BY 4-640599-4 95.10[3.744] 24 2-640699-4  
△ SUPERSEDED BY 4-640599-3 91.13[3.588] 23 2-640699-3  
△ SUPERSEDED BY 4-640599-2 87.17[3.432] 22 2-640699-2  
△ SUPERSEDED BY 4-640599-1 83.21[3.276] 21 2-640699-1  
△ SUPERSEDED BY 4-640599-0 79.25[3.120] 20 2-640699-0  
△ SUPERSEDED BY 4-640599-9 75.29[2.964] 19 1-640599-9  
△ SUPERSEDED BY 4-640599-8 71.32[2.808] 18 1-640599-8  
△ SUPERSEDED BY 4-640599-7 67.36[2.652] 17 1-640599-7  
△ SUPERSEDED BY 4-640599-6 63.40[2.496] 16 1-640599-6  
△ SUPERSEDED BY 4-640599-5 59.44[2.340] 15 1-640599-5  
△ SUPERSEDED BY 4-640599-4 55.47[2.184] 14 1-640599-4  
△ SUPERSEDED BY 4-640599-3 51.51[2.028] 13 1-640599-3  
△ SUPERSEDED BY 4-640599-2 47.55[1.872] 12 1-640599-2  
△ SUPERSEDED BY 4-640599-1 43.59[1.716] 11 1-640599-1  
△ SUPERSEDED BY 4-640599-0 39.62[1.560] 10 1-640599-0

THIS DRAWING IS A CONTROLLED DOCUMENT. DIM S CARPENTER 09AA2003  
CHK D BOSSI 09AA2003  
APP D BOSSI 09AA2003  
PRODUCT SPEC: 108-1051  
APPLICATION SPEC: 114-1020  
WEIGHT: -  
CUSTOMER DRAWING

DIMENSIONS: mm [INCHES]  
TOLERANCES UNLESS OTHERWISE SPECIFIED:  
0 PLZ # - #  
1 PLZ # - #  
2 PLZ # - #  
3 PLZ # 0.13 [005]  
4 PLZ # - #  
ANGLES # - #  
FINISH # - #

TE Connectivity  
MTA-156 CONNECTOR ASSEMBLY,  
18 AWG, STANDARD

SIZE: A2 00779 C-640599  
SCALE: 4:1 SHEET 1 of 1 REV: S2

METRIC