

4

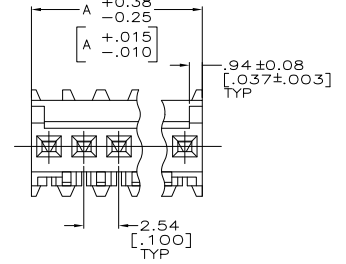
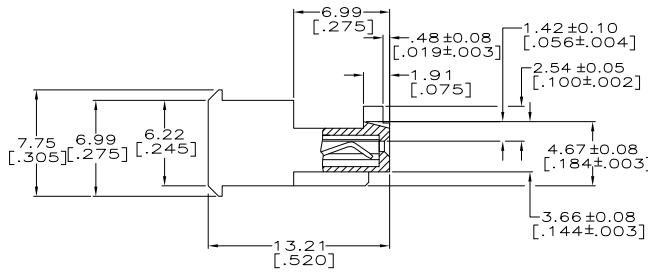
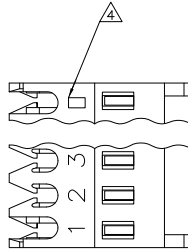
3

2

1

THIS DRAWING IS UNPUBLISHED. RELEASED FOR PUBLICATION. ALL RIGHTS RESERVED.

LOC	DIST	REVISIONS					
CM	00	F	LNK	DESCRIPTION	DATE	BY	APPD
		D2		REVISED PER ECO-11-004820	11MAR11	RK	HMR



1. MATERIAL: CONNECTOR - NYLON UL94V-2 (RED).
 CONTACTS - 0.30[.012] THICK COPPER ALLOY BRIGHT TIN-LEAD .00203[.000080] MIN THICKNESS FOR 644540-2 THRU 2-644540-8.
 MATTE WHISKER MITIGATED TIN .00203[.000080] MIN THICKNESS OVER NICKEL UNDERPLATE FOR 3-644540-2 THRU 4-644540-5.

2. CONTACTS ACCEPT 22 AWG WIRE WITH 1.52[.060] MAX INSULATION DIAMETER.

3. CONTACTS MUST ACCEPT 0.64 ± 0.03[.025] POST AND REMAIN LOCKED IN POSITION.

4. IDENTIFICATION NUMBER FOR LAST CIRCUIT MAY NOT APPEAR ON ALL ASSEMBLIES.

5. DIMENSIONS IN BRACKETS ARE IN INCHES.

6. HOUSING FEATURES ARE: FEED THRU WITH LOCKING RAMP AND WITH POLARIZING TAB.

7. OBSOLETE PARTS: OBSOLETE CIS STREAMLINING PER D.RENAUD/D.SINISI

YES	38.10[1.500]	15	4-644540-5
YES	35.56[1.400]	14	4-644540-4
YES	33.02[1.300]	13	4-644540-3
YES	30.48[1.200]	12	4-644540-2
YES	27.94[1.100]	11	4-644540-1
YES	25.40[1.000]	10	4-644540-0
YES	22.86[.900]	9	3-644540-9
YES	20.32[.800]	8	3-644540-8
YES	17.78[.700]	7	3-644540-7
YES	15.24[.600]	6	3-644540-6
YES	12.70[.500]	5	3-644540-5
YES	10.16[.400]	4	3-644540-4
YES	7.62[.300]	3	3-644540-3
YES	5.08[.200]	2	3-644540-2

NO	38.10[1.500]	15	1-644540-5	SUPERSEDED BY 4-644540-5
NO	35.56[1.400]	14	1-644540-4	
NO	33.02[1.300]	13	1-644540-3	SUPERSEDED BY 4-644540-3
NO	30.48[1.200]	12	1-644540-2	
NO	27.94[1.100]	11	1-644540-1	
NO	25.40[1.000]	10	1-644540-0	SUPERSEDED BY 4-644540-0
NO	22.86[.900]	9	644540-9	
NO	20.32[.800]	8	644540-8	
NO	17.78[.700]	7	644540-7	
NO	15.24[.600]	6	644540-6	
NO	12.70[.500]	5	644540-5	
NO	10.16[.400]	4	644540-4	
NO	7.62[.300]	3	644540-3	
NO	5.08[.200]	2	644540-2	

LEADFREE	DIM A	NO. OF CIRCUITS	PART NO.
----------	-------	-----------------	----------



THIS DRAWING IS A CONTROLLED DOCUMENT.

DIM S. CARPENTER 12JAN2003	TE Connectivity MTA 100 CONNECTOR ASSEMBLY, 22 AWG, STANDARD
CHK D. BOSSI 12JAN2003	
APP D. BOSSI	NAME
PRODUCT SPEC 108-1050	APPLICATION SPEC 114-1019
WEIGHT	SIZE CASE CODE DRAWING NO. A2 00779 C-644540
MATERIAL	CUSTOMER DRAWING
FINISH	SCALE 5:1 SHEET 1 of 1 REV D2

2D

1471-9 (3/11)