

4

3

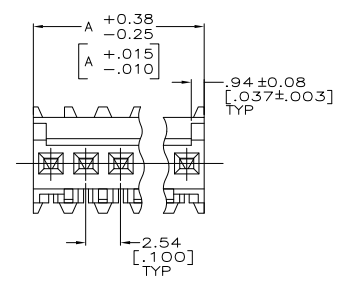
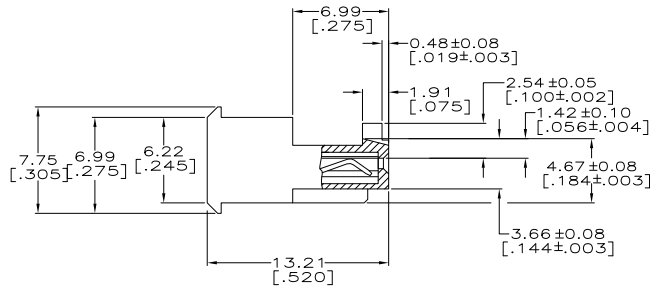
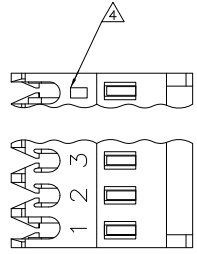
2

1

THIS DRAWING IS UNPUBLISHED. RELEASED FOR PUBLICATION
 © COPYRIGHT - By - ALL RIGHTS RESERVED.

LOC	DIST	REVISIONS			
P	LTR	DESCRIPTION	DATE	BY	APPD
CM	00				
	D2	REVISED PER ECO-11-004917	11MAR11	RK	HMR

DIM A	NO. OF CIRCUITS	PART NO.	
60.96 [2.400]	24	5-644564-4	
55.88 [2.200]	22	5-644564-2	
53.34 [2.100]	21	5-644564-1	
50.80 [2.000]	20	5-644564-0	
48.26 [1.900]	19	4-644564-9	
45.72 [1.800]	18	4-644564-8	
43.18 [1.700]	17	4-644564-7	
40.64 [1.600]	16	4-644564-6	
38.10 [1.500]	15	4-644564-5	
35.56 [1.400]	14	4-644564-4	
33.02 [1.300]	13	4-644564-3	
30.48 [1.200]	12	4-644564-2	
27.94 [1.100]	11	4-644564-1	
25.40 [1.000]	10	4-644564-0	
22.86 [.900]	9	3-644564-9	
20.32 [.800]	8	3-644564-8	
17.78 [.700]	7	3-644564-7	
15.24 [.600]	6	3-644564-6	
12.70 [.500]	5	3-644564-5	
10.16 [.400]	4	3-644564-4	
7.62 [.300]	3	3-644564-3	
5.08 [.200]	2	3-644564-2	
60.96 [2.400]	24	2-644564-4	SUPERSEDED
55.88 [2.200]	22	2-644564-2	SUPERSEDED
38.10 [1.500]	15	1-644564-5	SUPERSEDED
35.56 [1.400]	14	1-644564-4	SUPERSEDED
33.02 [1.300]	13	1-644564-3	SUPERSEDED
30.48 [1.200]	12	1-644564-2	SUPERSEDED
27.94 [1.100]	11	1-644564-1	SUPERSEDED
25.40 [1.000]	10	1-644564-0	SUPERSEDED
22.86 [.900]	9	644564-9	SUPERSEDED
20.32 [.800]	8	644564-8	SUPERSEDED
17.78 [.700]	7	644564-7	SUPERSEDED
15.24 [.600]	6	644564-6	SUPERSEDED
12.70 [.500]	5	644564-5	SUPERSEDED
10.16 [.400]	4	644564-4	
7.62 [.300]	3	644564-3	
5.08 [.200]	2	644564-2	
DIM A	NO. OF CIRCUITS	PART NO.	



- ⚠ MATERIAL: CONNECTOR - NYLON UL94V-2 (BLUE).
 CONTACTS - 0.30[.012] THICK COPPER ALLOY
 BRIGHT TIN-LEAD .00203[.000080] MIN THICKNESS
 FOR 644564-2 THRU 2-644564-8.
 MATTE WHISKER MITIGATED TIN .00203[.000080] MIN THICKNESS
 OVER NICKEL UNDERPLATE FOR 3-644564-2 THRU 5-644564-4.
- CONTACTS ACCEPT 26 AWG WIRE WITH 1.52[.060] MAX INSULATION DIAMETER.
 - CONTACTS MUST ACCEPT 0.64±0.03[.025] POST AND REMAIN LOCKED IN POSITION.
 - IDENTIFICATION NUMBER FOR LAST CIRCUIT MAY NOT APPEAR ON ALL ASSEMBLIES.
 - DIMENSIONS IN BRACKETS ARE IN INCHES.
 - HOUSING FEATURES ARE: FEED THRU WITH LOCKING RAMP AND WITH POLARIZING TAB.
 - OBsolete PARTS: OBsolete CIS STREAMLINING PER D.RENAUD/D.SINISI

METRIC

THIS DRAWING IS A CONTROLLED DOCUMENT.

DIMENSIONS: INCHES DECIMALS FRACTIONS ANGLES FINISH	DIMS. CARPENTER 12JUN2003 S. CARPENTER 12JUN2003 D. BOSSI 12JUN2003 D. BOSSI 12JUN2003 PRODUCT SPEC: 108-1050 APPLICATION SPEC: 114-1019 WEIGHT:	TE Connectivity MTA-100 CONNECTOR ASSEMBLY, 26 AWG, STANDARD	SIZE: A2 CASE CODE: 00779 DRAWING NO: C-644564 RESTRICTED TO:
--	--	--	--

CUSTOMER DRAWING SCALE: 5:1 SHEET: 1 of 1 REV: D2