

4

3

2

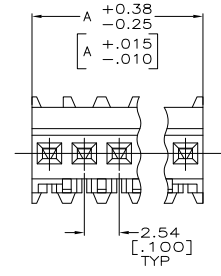
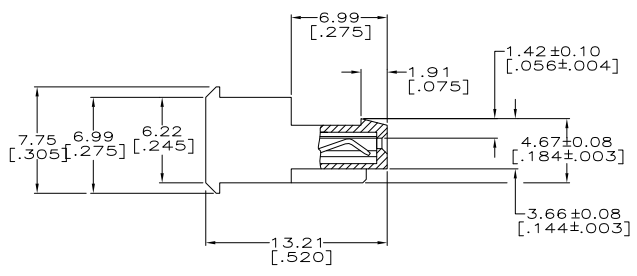
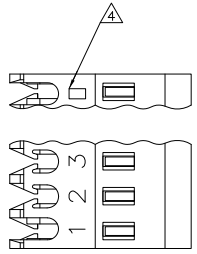
1

THIS DRAWING IS UNPUBLISHED. RELEASED FOR PUBLICATION. ALL RIGHTS RESERVED.

LOC	DIST	REVISIONS		
F	LNK	DESCRIPTION	DATE	BY
CM	00	V2 REVISED PER ECO-11-004587	11MAR11	RK HMR

YES	71.12	[2.800]	28	5-640621-8
YES	68.58	[2.700]	27	5-640621-7
YES	66.04	[2.600]	26	5-640621-6
YES	63.50	[2.500]	25	5-640621-5
YES	60.96	[2.400]	24	5-640621-4
YES	58.42	[2.300]	23	5-640621-3
YES	55.88	[2.200]	22	5-640621-2
YES	53.34	[2.100]	21	5-640621-1
YES	50.80	[2.000]	20	5-640621-0
YES	48.26	[1.900]	19	4-640621-9
YES	45.72	[1.800]	18	4-640621-8
YES	43.18	[1.700]	17	4-640621-7
YES	40.64	[1.600]	16	4-640621-6
YES	38.10	[1.500]	15	4-640621-5
YES	35.56	[1.400]	14	4-640621-4
YES	33.02	[1.300]	13	4-640621-3
YES	30.48	[1.200]	12	4-640621-2
YES	27.94	[1.100]	11	4-640621-1
YES	25.40	[1.000]	10	4-640621-0
YES	22.86	[.900]	9	3-640621-9
YES	20.32	[.800]	8	3-640621-8
YES	17.78	[.700]	7	3-640621-7
YES	15.24	[.600]	6	3-640621-6
YES	12.70	[.500]	5	3-640621-5
YES	10.16	[.400]	4	3-640621-4
YES	7.62	[.300]	3	3-640621-3
YES	5.08	[.200]	2	3-640621-2
NO	71.12	[2.800]	28	2-640621-8
NO	68.58	[2.700]	27	2-640621-7
NO	66.04	[2.600]	26	2-640621-6
NO	63.50	[2.500]	25	2-640621-5
NO	60.96	[2.400]	24	2-640621-4
NO	58.42	[2.300]	23	2-640621-3
NO	55.88	[2.200]	22	2-640621-2
NO	53.34	[2.100]	21	2-640621-1
NO	50.80	[2.000]	20	2-640621-0
NO	48.26	[1.900]	19	1-640621-9
NO	45.72	[1.800]	18	1-640621-8
NO	43.18	[1.700]	17	1-640621-7
NO	40.64	[1.600]	16	1-640621-6
NO	38.10	[1.500]	15	1-640621-5
NO	35.56	[1.400]	14	1-640621-4
NO	33.02	[1.300]	13	1-640621-3
NO	30.48	[1.200]	12	1-640621-2
NO	27.94	[1.100]	11	1-640621-1
NO	25.40	[1.000]	10	1-640621-0
NO	22.86	[.900]	9	640621-9
NO	20.32	[.800]	8	640621-8
NO	17.78	[.700]	7	640621-7
NO	15.24	[.600]	6	640621-6
NO	12.70	[.500]	5	640621-5
NO	10.16	[.400]	4	640621-4
NO	7.62	[.300]	3	640621-3
NO	5.08	[.200]	2	640621-2

LEADERFEET DIM A NO. OF CIRCUITS PART NO.



- △ MATERIAL: CONNECTOR - NYLON UL94V-2 (WHITE).
 CONTACTS - 0.30[.012] THICK COPPER ALLOY
 BRIGHT TIN-LEAD .00203[.000080] MIN THICKNESS
 FOR 640621-2 THRU 2-640621-8.
 MATTE WHISKER MITIGATED TIN .00203[.000080] MIN THICKNESS
 OVER NICKEL UNDERPLATE FOR 3-640621-2 THRU 5-640621-8.
- CONTACTS ACCEPT 24 AWG WIRE WITH 1.52[.060] MAX INSULATION DIAMETER.
 - CONTACTS MUST ACCEPT 0.64±0.03[.025] POST AND REMAIN LOCKED IN POSITION.
 - IDENTIFICATION NUMBER FOR LAST CIRCUIT MAY NOT APPEAR ON ALL ASSEMBLIES.
 - DIMENSIONS IN BRACKETS ARE IN INCHES.
 - HOUSING FEATURES ARE: FEED THRU WITH LOCKING RAMP.
 - OBsolete PARTS: OBSOLETE CIS STREAMLINING PER D.RENAUD/D.SINISI



THIS DRAWING IS A CONTROLLED DOCUMENT.		DRN S. CARPENTER 11JAN2003	TE Connectivity
DIMENSIONS: mm [INCHES]		CHK D. BOSSI 11JAN2003	
TOLERANCES UNLESS OTHERWISE SPECIFIED:		APP D. BOSSI 11JAN2003	NAME
Ø PLG ± .015 [0.05]	PLG ± .015 [0.05]	PRODUCT SPEC	MTA-100 CONNECTOR ASSEMBLY, 24 AWG, STANDARD
PLG ± .015 [0.05]	PLG ± .015 [0.05]	APPLICATION SPEC	RESTRICTED TO
ANGLES ± .015 [0.05]	FINISH	114-1019	SIZE CASE CODE DRAWING NO
		A2 00779 C=640621	114-1019
		CUSTOMER DRAWING	SCALE 5:1 SHEET 1 of 1 REV V2