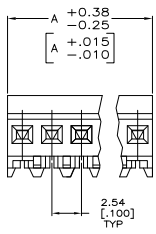
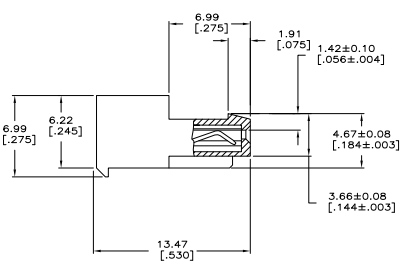
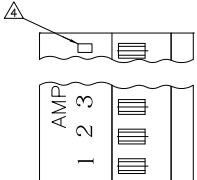


- 1 MATERIAL: CONNECTOR-NYLON UL94V-2 (RED).
 CONTACTS-0.30 [.012] THICK COPPER ALLOY
 BRIGHT TIN-LEAD 0.00203 [.000080] MINIMUM THICK FOR CONTACTS
 641534-2 THRU 641534-8,
 MATTE WHISKER MITIGATED TIN PLATE 0.00203 [.000080] MINIMUM THICK OVER
 NICKEL UNDERPLATE FOR CONTACTS 3-641534-2 THRU 3-641534-8.
2. CONTACTS ACCEPT 22 AWG WIRE WITH 1.52 [.060] MAXIMUM INSULATION DIAMETER.
3. CONTACTS MUST ACCEPT 0.36-0.51 [.014-.020] SQUARE OR ROUND POST AND
 REMAINED LOCKED IN POSITION.
- 4 IDENTIFICATION NUMBER FOR LAST CIRCUIT MAY NOT APPEAR ON ALL ASSEMBLIES.
5. DIMENSIONS IN BRACKETS ARE IN INCHES.
6. HOUSING FEATURES ARE: CLOSED END WITH LOCKING RAMP & LED CONTACT.
- 7 OBSOLETE PARTS: OBSOLETE CIS STREAMLINING PER D.RENAUD/D.SINISI



LEAD FIRE	20.32 [.800]	8	3-641534-8
	10.16 [.400]	4	3-641534-4
	7.62 [.300]	3	3-641534-3
	5.08 [.200]	2	3-641534-2
	DIM A	NO.OF POSN	ASSEMBLY

⚠ SUPERSEDED

CONTAINS LEAD	20.32 [.800]	8	641534-8
	10.16 [.400]	4	-641534-4-
	7.62 [.300]	3	641534-3
	5.08 [.200]	2	641534-2
	DIM A	NO.OF POSN	ASSEMBLY



THIS DRAWING IS A CONTROLLED DOCUMENT. DATE: 10-02-2004
 BY: HOOVER
 CHECKED BY: BOSSI
 DATE: 10-02-2004
 PART NO: 108-1050
 OPERATOR SPEC: 114-1019
 CUSTOMER DRAWING: A100779
 DRAWING NO: 641534
 TITLE: MTA-100 CONNECTOR ASSEMBLY, 22 AWG, FOR .014 TO .020 POST, SPECIAL
 REWORKED TO: F2
 DATE: 8-1
 SHEET: 1
 OF: 1