

4

3

2

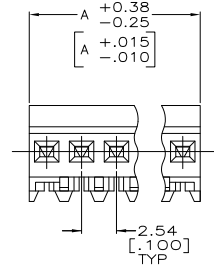
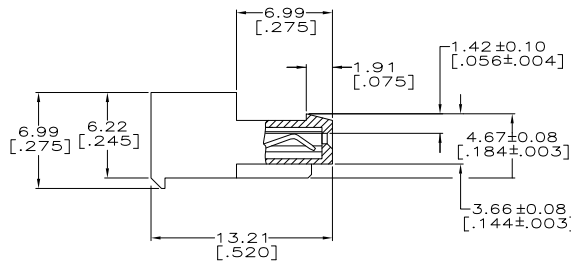
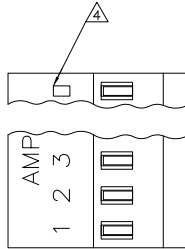
1

THIS DRAWING IS UNPUBLISHED. RELEASED FOR PUBLICATION.  
 © copyright - By - ALL RIGHTS RESERVED.

LOC	DIST	REVISIONS			
F	LNK	DESCRIPTION	DATE	BY	APPD
	N2	REVISED PER ECO-11-004587	11MAR11	RK	HMR

YES	71.12	[2.800]	28	5-640441-8
YES	68.58	[2.700]	27	5-640441-7
YES	66.04	[2.600]	26	5-640441-6
YES	63.50	[2.500]	25	5-640441-5
YES	60.96	[2.400]	24	5-640441-4
YES	58.42	[2.300]	23	5-640441-3
YES	55.88	[2.200]	22	5-640441-2
YES	53.34	[2.100]	21	5-640441-1
YES	50.80	[2.000]	20	5-640441-0
YES	48.26	[1.900]	19	4-640441-9
YES	45.72	[1.800]	18	4-640441-8
YES	43.18	[1.700]	17	4-640441-7
YES	40.64	[1.600]	16	4-640441-6
YES	38.10	[1.500]	15	4-640441-5
YES	35.56	[1.400]	14	4-640441-4
YES	33.02	[1.300]	13	4-640441-3
YES	30.48	[1.200]	12	4-640441-2
YES	27.94	[1.100]	11	4-640441-1
YES	25.40	[1.000]	10	4-640441-0
YES	22.86	[.900]	9	3-640441-9
YES	20.32	[.800]	8	3-640441-8
YES	17.78	[.700]	7	3-640441-7
YES	15.24	[.600]	6	3-640441-6
YES	12.70	[.500]	5	3-640441-5
YES	10.16	[.400]	4	3-640441-4
YES	7.62	[.300]	3	3-640441-3
YES	5.08	[.200]	2	3-640441-2
NO	71.12	[2.800]	28	2-640441-8
NO	68.58	[2.700]	27	2-640441-7
NO	66.04	[2.600]	26	2-640441-6
NO	63.50	[2.500]	25	2-640441-5
NO	60.96	[2.400]	24	2-640441-4
NO	58.42	[2.300]	23	2-640441-3
NO	55.88	[2.200]	22	2-640441-2
NO	53.34	[2.100]	21	2-640441-1
NO	50.80	[2.000]	20	2-640441-0
NO	48.26	[1.900]	19	1-640441-9
NO	45.72	[1.800]	18	1-640441-8
NO	43.18	[1.700]	17	1-640441-7
NO	40.64	[1.600]	16	1-640441-6
NO	38.10	[1.500]	15	1-640441-5
NO	35.56	[1.400]	14	1-640441-4
NO	33.02	[1.300]	13	1-640441-3
NO	30.48	[1.200]	12	1-640441-2
NO	27.94	[1.100]	11	1-640441-1
NO	25.40	[1.000]	10	1-640441-0
NO	22.86	[.900]	9	640441-9
NO	20.32	[.800]	8	640441-8
NO	17.78	[.700]	7	640441-7
NO	15.24	[.600]	6	640441-6
NO	12.70	[.500]	5	640441-5
NO	10.16	[.400]	4	640441-4
NO	7.62	[.300]	3	640441-3
NO	5.08	[.200]	2	640441-2
LEADFREE	DIM A	NO. OF CIRCUITS	PART NO.	

SUPERCEDED BY 5-640441-8  
 SUPERCEDED BY 5-640441-7  
 SUPERCEDED BY 5-640441-6  
 SUPERCEDED BY 5-640441-5  
 SUPERCEDED BY 5-640441-3  
 SUPERCEDED BY 5-640441-1



- △ MATERIAL: CONNECTOR - NYLON UL94V-2 (WHITE).  
 CONTACTS - 0.30[.012] THICK COPPER ALLOY  
 BRIGHT TIN-LEAD .00203[.000080] MIN THICKNESS  
 FOR 640441-2 THRU 2-640441-8.  
 MATTE WHISKER MITIGATED TIN .00203[.000080] MIN THICKNESS  
 OVER NICKEL UNDERPLATE FOR 3-640441-2 THRU 5-640441-8.
- 2. CONTACTS ACCEPT 24 AWG WIRE WITH 1.52[.060] MAX INSULATION DIAMETER.
- 3. CONTACTS MUST ACCEPT 0.64±0.03[.025] POST AND REMAIN LOCKED IN POSITION.
- △ IDENTIFICATION NUMBER FOR LAST CIRCUIT MAY NOT APPEAR ON ALL ASSEMBLIES.
- 5. DIMENSIONS IN BRACKETS ARE IN INCHES.
- 6. HOUSING FEATURES ARE: CLOSED END WITH LOCKING RAMP.
- △ OBSOLETE PARTS: OBSOLETE CIS STREAMLINING PER D.RENAUD/D.SINISI

METRIC

THIS DRAWING IS A CONTROLLED DOCUMENT.		DRN S. CARPENTER 09JAN2003	
DIMENSIONS: mm [INCHES]		CHK D. BOSSI 09JAN2003	
TOLERANCES UNLESS OTHERWISE SPECIFIED:		APPD D. BOSSI 09JAN2003	TE Connectivity
0 PLG ± .013 [0.05]	1 PLG ± .013 [0.05]	NAME	MTA-100 CONNECTOR ASSEMBLY, 24 AWG, STANDARD
2 PLG ± .013 [0.05]	3 PLG ± .013 [0.05]	PRODUCT SPEC	108-1050
4 PLG ± .013 [0.05]	ANGLES ± .013 [0.05]	APPLICATION SPEC	114-1019
FINISH		WEIGHT	A2 00779 C=640441
CUSTOMER DRAWING		SCALE	5:1 SHEET 1 of 1 REV N2

640441

A

1

2