

4

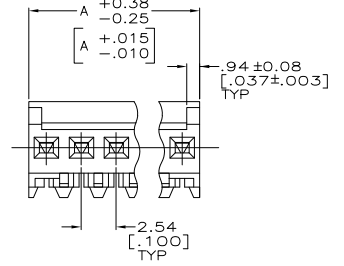
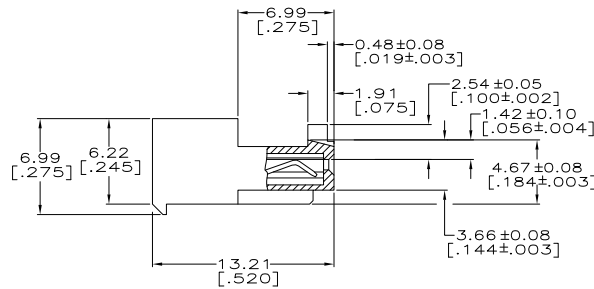
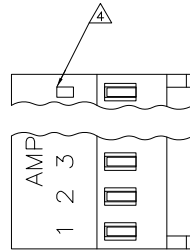
3

2

1

THIS DRAWING IS UNPUBLISHED. RELEASED FOR PUBLICATION. ALL RIGHTS RESERVED.

LOC	DIST	REVISIONS			
F	LNK	DESCRIPTION	DATE	BY	APPD
CM	00	H2	REVISED PER ECO-11-004587	11MAR11	RK HMR



YES/NO	DIM A	NO. OF CIRCUITS	PART NO.	REVISIONS
YES	71.12[2.800]	28	5-643813-8	
YES	68.58[2.700]	27	5-643813-7	
YES	66.04[2.600]	26	5-643813-6	
YES	63.50[2.500]	25	5-643813-5	
YES	60.96[2.400]	24	5-643813-4	
YES	58.42[2.300]	23	5-643813-3	
YES	55.88[2.200]	22	5-643813-2	
YES	53.34[2.100]	21	5-643813-1	
YES	50.80[2.000]	20	5-643813-0	
YES	48.26[1.900]	19	4-643813-9	
YES	45.72[1.800]	18	4-643813-8	
YES	43.18[1.700]	17	4-643813-7	
YES	40.64[1.600]	16	4-643813-6	
YES	38.10[1.500]	15	4-643813-5	
YES	35.56[1.400]	14	4-643813-4	
YES	33.02[1.300]	13	4-643813-3	
YES	30.48[1.200]	12	4-643813-2	
YES	27.94[1.100]	11	4-643813-1	
YES	25.40[1.000]	10	4-643813-0	
YES	22.86[.900]	9	3-643813-9	
YES	20.32[.800]	8	3-643813-8	
YES	17.78[.700]	7	3-643813-7	
YES	15.24[.600]	6	3-643813-6	
YES	12.70[.500]	5	3-643813-5	
YES	10.16[.400]	4	3-643813-4	
YES	7.62[.300]	3	3-643813-3	
YES	5.08[.200]	2	3-643813-2	
NO	71.12[2.800]	28	2-643813-8	SUPERSEDED BY 5-643813-8
NO	68.58[2.700]	27	2-643813-7	SUPERSEDED BY 5-643813-7
NO	66.04[2.600]	26	2-643813-6	
NO	63.50[2.500]	25	2-643813-5	SUPERSEDED BY 5-643813-5
NO	60.96[2.400]	24	2-643813-4	
NO	58.42[2.300]	23	2-643813-3	SUPERSEDED BY 5-643813-3
NO	55.88[2.200]	22	2-643813-2	SUPERSEDED BY 5-643813-2
NO	53.34[2.100]	21	2-643813-1	SUPERSEDED BY 5-643813-1
NO	50.80[2.000]	20	2-643813-0	
NO	48.26[1.900]	19	1-643813-9	SUPERSEDED BY 4-643813-9
NO	45.72[1.800]	18	1-643813-8	
NO	43.18[1.700]	17	1-643813-7	
NO	40.64[1.600]	16	1-643813-6	
NO	38.10[1.500]	15	1-643813-5	
NO	35.56[1.400]	14	1-643813-4	
NO	33.02[1.300]	13	1-643813-3	
NO	30.48[1.200]	12	1-643813-2	
NO	27.94[1.100]	11	1-643813-1	
NO	25.40[1.000]	10	1-643813-0	
NO	22.86[.900]	9	643813-9	
NO	20.32[.800]	8	643813-8	
NO	17.78[.700]	7	643813-7	
NO	15.24[.600]	6	643813-6	
NO	12.70[.500]	5	643813-5	
NO	10.16[.400]	4	643813-4	
NO	7.62[.300]	3	643813-3	
NO	5.08[.200]	2	643813-2	
LEADFREE	DIM A	NO. OF CIRCUITS	PART NO.	

- ⚠ MATERIAL: CONNECTOR - NYLON UL94V-2 (RED).  
CONTACTS - 0.30[.012] THICK COPPER ALLOY BRIGHT TIN-LEAD .00203[.000080] MIN THICKNESS FOR 643813-2 THRU 2-643813-8.  
MATTE WHISKER MITIGATED TIN .00203[.000080] MIN THICKNESS OVER NICKEL UNDERPLATE FOR 3-643813-2 THRU 5-643813-8.
- 2. CONTACTS ACCEPT 22 AWG WIRE WITH 1.52[.060] MAX INSULATION DIAMETER.
- 3. CONTACTS MUST ACCEPT 0.64±0.03[.025] POST AND REMAIN LOCKED IN POSITION.
- ⚠ IDENTIFICATION NUMBER FOR LAST CIRCUIT MAY NOT APPEAR ON ALL ASSEMBLIES.
- 5. DIMENSIONS IN BRACKETS ARE IN INCHES.
- 6. HOUSING FEATURES ARE: CLOSED END WITH LOCKING RAMP AND WITH POLARIZING TAB.
- ⚠ OBSOLETE PARTS: OBSOLETE CIS STREAMLINING PER D.RENAUD/D.SINISI

METRIC

THIS DRAWING IS A CONTROLLED DOCUMENT.

DIMENSIONS: mm [INCHES]	TOLERANCES UNLESS OTHERWISE SPECIFIED:	DRN S. CARPENTER 11JAN2003	TE Connectivity
0 PLG ± .015 [0.05]	1 PLG ± .015 [0.05]	CHK D. BOSSI 11JAN2003	TE Connectivity
2 PLG ± .015 [0.05]	3 PLG ± .015 [0.05]	APP D. BOSSI 11JAN2003	TE Connectivity
4 PLG ± .015 [0.05]	ANGLES ± .015 [0.05]	PRODUCT SPEC 108-1050	TE Connectivity
MATERIAL ⚠	FINISH ⚠	APPLICATION SPEC 114-1019	TE Connectivity
		WEIGHT	RESTRICTED TO -
		CUSTOMER DRAWING	SCALE 5:1 SHEET 1 of 1 REV H2