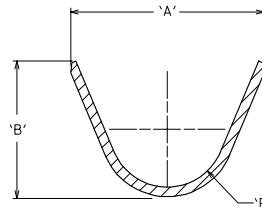
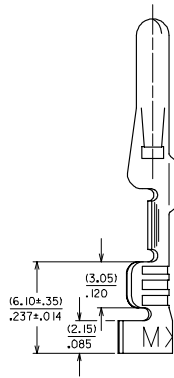
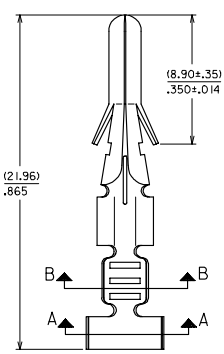
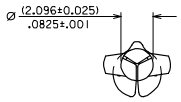


10 9 8 7 6 5 4 3 2 1

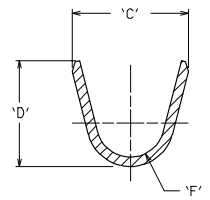
NOTES:

1. THIS TERMINAL FOR USE WITH HOUSING P/N. 8981-4M*
2. FINISH: (.00089)/.000035 MIN. TIN OVER (.0005)/.000020 MIN. NICKEL.
3. MATERIAL: (0.25)/.010 THK PHOS BRONZE, ALLOY CA 51000.

ENG NO.	ENG NO.	FORM	'A'	'B'	'C'	'D'	'E'	'F'
002-08-1335	8980-6L-LF	LOOSE, 14-20 AWG WIRE	(4.44) .175	(3.39) .133	(3.02) .119	(3.61) .142	(1.23) .048	(0.61) .024
002-08-1337	8980-6L1-LF	LOOSE, 18-22 AWG WIRE	(3.28) .129	(2.58) .102	(2.44) .096	(2.58) .102	(0.91) .036	(0.53) .021



SECTION A-A



SECTION B-B

OBS P/N EC NO. S2007-0291 DRWN:SKANG CHKD:HLONG APPR:SKTOH REV D	QUALITY SYMBOLS ▽=0 ▽=0	GENERAL TOLERANCES (UNLESS SPECIFIED)		DIMENSION STYLE MM/IN		SCALE NTS	DESIGN UNITS METRIC	THIRD ANGLE PROJECTION
		4 PLACES ± --- ± ---	3 PLACES ± --- ± .008	2 PLACES ± 0.20 ± ---	1 PLACE ± --- ± ---	ANGULAR ± 3 °	DRAWN BY JWAN DATE 1994/11/03	CHECKED BY ERPOH DATE 1994/11/04
DRAFT WHERE APPLICABLE MUST REMAIN WITHIN DIMENSIONS		SEE TABLE		MATERIAL NO.		DOCUMENT NO. SD-8980-6*		SHEET NO. 1 OF 1
				SIZE A3		THIS DRAWING CONTAINS INFORMATION THAT IS PROPRIETARY TO MOLEX INCORPORATED AND SHOULD NOT BE USED WITHOUT WRITTEN PERMISSION		

9 8 7 6 5 4 3 2 1