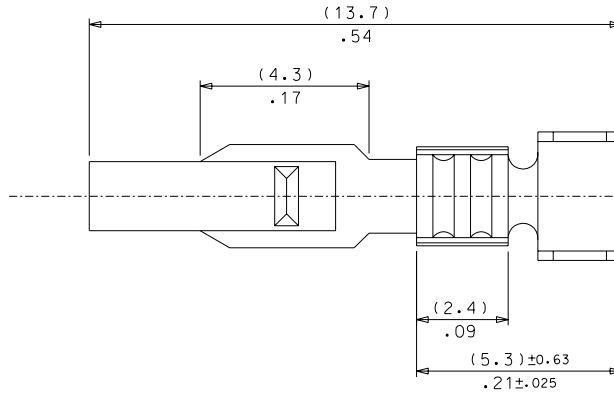
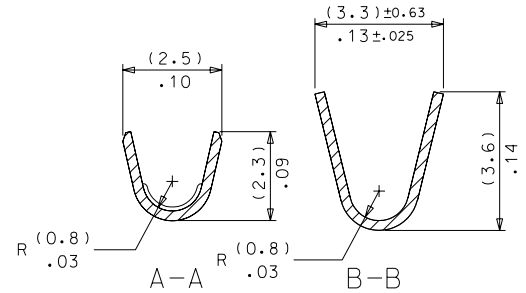
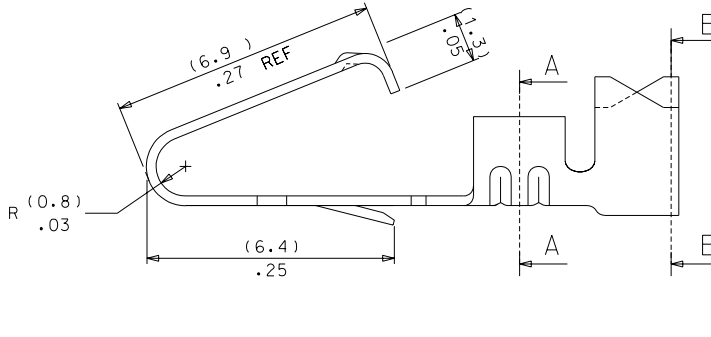
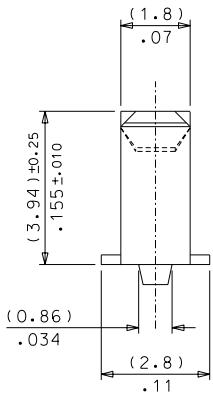


PART NO. SEE CHART
 ENG. NO. SD-8993-(****)*



NOTES:

1. CRIMP FOR 18-24 AWG WIRE (2.79)/.11 MAX INSUL DIA
2. CODE LETTER PRECEDING PART NO. DESIGNATES MFG LOC'N 1=IRELAND
3. MATERIAL: (0.25)/.010 THICK BRASS
4. THIS PART CONFORMS TO MOLEX PROD. SPEC. 99020-0087



PART No.	ENG No.	FORM	FINISH
08-50-0011	8993-(P125)	CHAIN	(P125) HOT TIN DIP
NOT TOOLED	8993-(P125)L	LOOSE	.000100/.000250 (PRE PLATE)
1 08-50-0277	8993-(P902)	CHAIN	(P902) HOT TIN DIP
1 08-50-0276	8993-(P902)L	LOOSE	.000040/.000100 FOR INT'L USE ONLY (PRE PLATE)

CHANGED PLATING CODES EC NO. E2004-0036 DRW: PSHEAHAN 03/07/14 CHK: / / / APPR: / / /	QUALITY SYMBOLS MAJOR CRITICAL	GENERAL TOLERANCES: (UNLESS SPECIFIED)		SCALE 10:1	DESIGN UNITS <input type="checkbox"/> mm <input type="checkbox"/> INCH	THIRD ANGLE PROJECTION	DIMENSIONS: <input checked="" type="checkbox"/> mm <input type="checkbox"/> INCH <input type="checkbox"/> mm ONLY	SHT	REV
		4 PLACES ±0.	±.	DRAWN BY & DATE T. MAHON 98/10/26	TITLE: TERMINAL, CRIMP STYLE				
		3 PLACES ±0.	±.010	CHECKED BY & DATE M. GOONEY / /					
		2 PLACES ±0.20	±.014	APPROVED BY & DATE M. WILHITE / /					
		1 PLACE ±0.30	±.						
		ANGULAR: ± 1/2°		CAD FILENAME S8993X1.DGN	MATERIAL NO. SEE CHART	DRAWING NO. SD - 8993 - ****		SHEET NO. 1 OF 1	SIZE B
DRAFT WHERE APPLICABLE MUST REMAIN WITHIN DIMENSIONS				THIS DRAWING CONTAINS INFORMATION THAT IS PROPRIETARY TO MOLEX INCORPORATED AND SHOULD NOT BE USED WITHOUT WRITTEN PERMISSION.					