

4

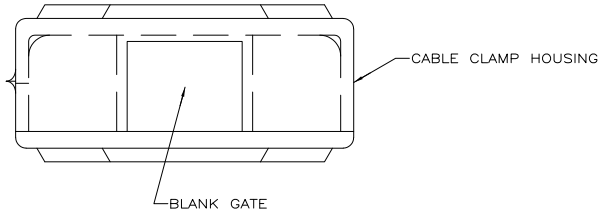
3

2

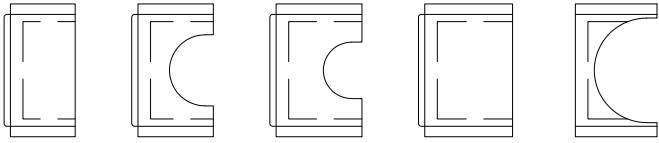
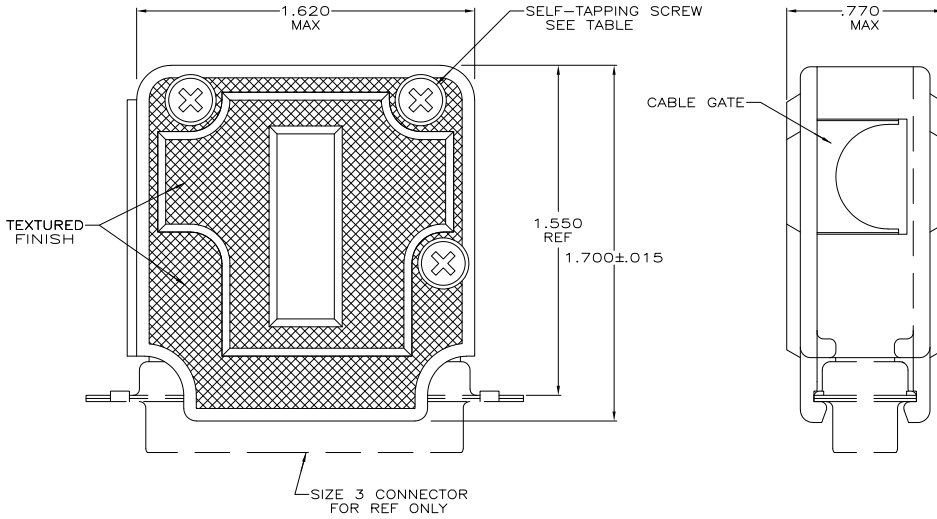
1

THIS DRAWING IS UNPUBLISHED. RELEASED FOR PUBLICATION. ALL RIGHTS RESERVED.

LOC		DIBT		REVISIONS		
BD	48	P	LTR	DESCRIPTION	DATE	BY
		F1		REVISED PER ECO-11-004835	11MAR11	RK HMR



- 1. PARTS PACKAGED UNASSEMBLED.
- 2. CABLE GATES ARE INTERCHANGEABLE ALLOWING 90° & 180° CABLE EXIT.
- ⚠ COMPONENTS INDIVIDUALLY BULK PACKED AND SHIPPED AS A UNIT PACKAGE KIT.



3-A .195 DIA CABLE REF

3-B .360 DIA CABLE REF

3-C .215 DIA CABLE REF

3-D BLANK GATE

3-E .390 DIA CABLE REF

GATES

OBSOLETE	SLOTTED	AS SHOWN	207345-4
OBSOLETE	SLOTTED	AS SHOWN	207345-3
	CROSS-RECESSED	AS SHOWN	207345-2
	CROSS-RECESSED	AS SHOWN	207345-1
	SCREW VERSION	PACKAGING	PART NUMBER

THIS DRAWING IS A CONTROLLED DOCUMENT.

DESIGNED BY: S. WELDON	DATE: 9-18-06
CHKD BY: C. RICHARD	DATE: 9-18-06
APP'D BY: S. SCHUEFLER	DATE: 9-18-06
PRODUCT SPEC: ---	NAME: ---
APPLICATION SPEC: ---	SIZE: ---
HEIGHT: ---	CAGE CODE: ---
	DRAWING NO: A200779
	REV: C-207345

MATERIAL: MOLDED PARTS: POLYPROPYLENE, COLOR: BLACK
SCREWS: STEEL PER ASTM A108

FINISH: SCREWS: ZINC PHOSPHATE PER MIL-C-16323

CUSTOMER DRAWING

TE Connectivity

CABLE CLAMP KIT, SIZE 3, ONE PIECE, 90DEG & 180DEG EXIT, AMPLIMITE®

RESTRICTED TO: ---

SCALE: NTS SHEET: 1 of 1 REV: F1