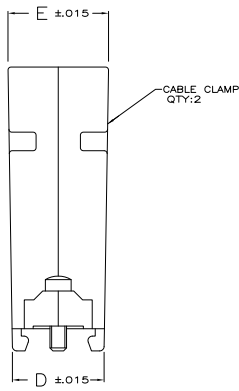
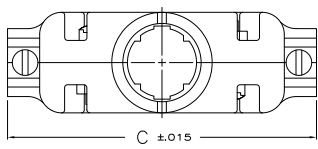


THIS DRAWING IS UNPUBLISHED
 RELEASED FOR PURSUIT
 ALL RIGHTS RESERVED

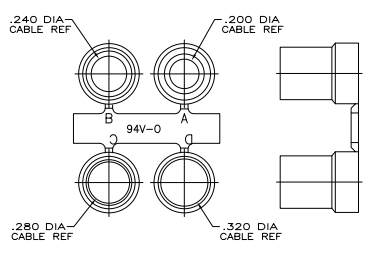
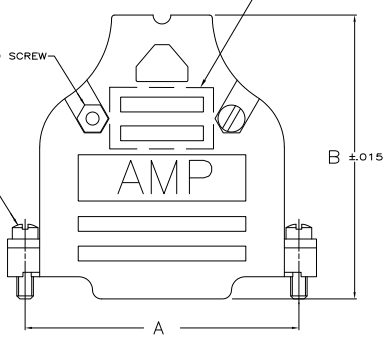
REV	DATE	DESCRIPTION	BY	CHK
00		REVISED PER ECO-11-004835	11MAR11	RK HMR



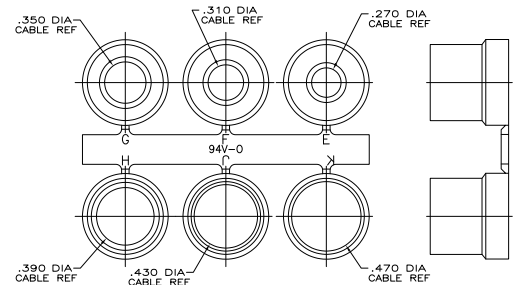
- PARTS PACKAGED UNASSEMBLED AS A UNIT KIT.
- CABLE CLAMPS: ABS COMPOUND, COLOR BLACK.
- FILISTER HEAD SCREWS, HEX NUTS & MOUNTING SCREWS: STEEL.
- GROMMETS: FLEXIBLE PVC, UL 94V-0 RATED, COLOR BLACK.
- CABLE CLAMPS: UNPLATED.
- FILISTER HEAD SCREWS, HEX NUTS & MOUNTING SCREWS: ZINC PLATED CLEAR CHROMATE COATED.
- SIZE 3 CONFIGURATION SHOWN. NUMBER AND SIZE OF SLOTS IN THIS AREA VARIES BY CABLE CLAMP SIZE.

4-40 FILLISTER HEAD SCREW & 4-40 HEX NUT QTY:2 EACH

4-40 MOUNTING SCREW QTY:2



GROMMET ASSORTMENT TYPE 1 SEE TABLE



GROMMET ASSORTMENT TYPE 2 SEE TABLE

TYPE	1	2	3	4	5	6	7
TYPE 2	.900	.730	2.644	1.920	2.406	5	5748678-5
TYPE 2	.800	.620	2.738	1.920	2.500	4	5748678-4
TYPE 2	.680	.640	2.090	1.920	1.852	3	5748678-3
TYPE 2	.620	.620	1.545	1.910	1.312	2	5748678-2
TYPE 1	.570	.630	1.215	1.910	.984	1	5748678-1

COPYRIGHT 2005
 TE CONNECTIVITY CORP
 ALL RIGHTS RESERVED

THIS DRAWING IS A CONTROLLED DOCUMENT		TE CONNECTIVITY		TE Connectivity	
DESIGNER	APPROVED	DATE	ISSUED	REV	BY
NOTES	REVISED	DATE	ISSUED	REV	BY
KIT, CABLE CLAMP, 180 DEGREE EXIT, UNPLATED, BLACK.					
CUSTOMER DRAWING		SIZE	DATE	DRAWING NO	RETRACTED TO
		A1	00779	G-5748678	