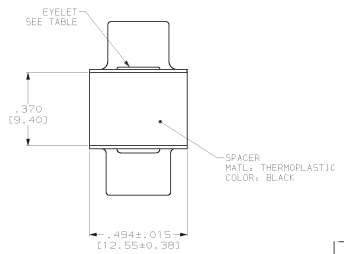
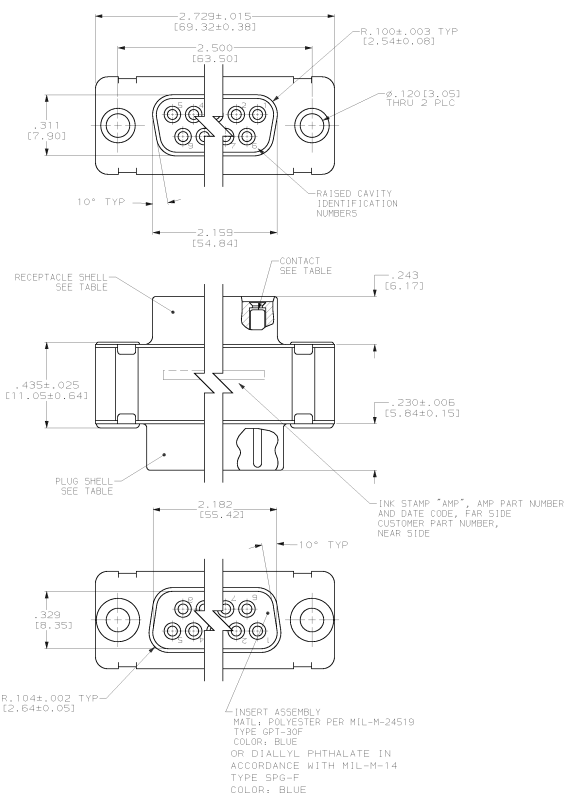
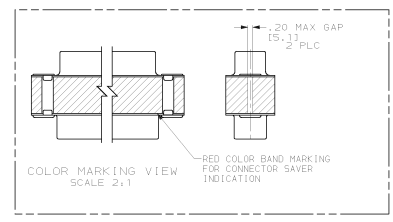


REVISED			
NO	BY	DATE	DESCRIPTION
1	DF	DO	
2			
3			
4			
5			
6			
7			
8			



1. CONTACTS INCLUDED IN ASSEMBLY.
- CONTACT  
 BODY MATL: BERYLLIUM COPPER PER ASTM-B-197.  
 BODY FINISH: PLATED GOLD, .00050 MIN THK PER MIL-G-45204 OVER NICKEL, .000050 MIN THK PER QQ-N-290.  
 HOOD MATL: STAINLESS STEEL PER ASTM-A-167.  
 HOOD FINISH: PASSIVATED PER ASTM-A-380
  - MATL: BRASS PER ASTM-B-36.
  - FINISH: PLATED GOLD, .000500 MIN THK PER MIL-G-45204 OVER COPPER, .000100 MIN THK PER MIL-C-14550.



SYMBOL	DESCRIPTION	VALUE	PART NO.
3/4	EYELET	4URB4 SOCN R10002677-0004 (1J02-004)	1218306-2
3/4	SHELLS		1218306-1
3/4	CONTACT		
		CUSTOMER P/N	PART NO.

THIS DRAWING IS A CONTROLLED DOCUMENT.		AMP Incorporated Harrisburg, PA 17105-3608	
DRAWING NO: 1218306	REV: 1 DATE: 06/03/02	TITLE: AMPLIMITE CONNECTOR SAVER SERIES 109, SIZE 4, 37 POS NON-REMOVABLE CONTACTS	PART NO: 1218306
MATERIAL: PBT		QTY: 1	UNIT: 1
FINISH: -		SPEC: -	DRAWING: -