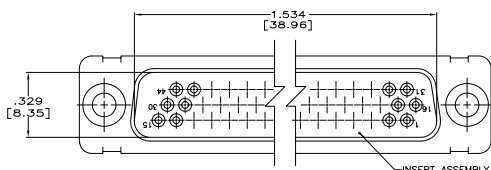
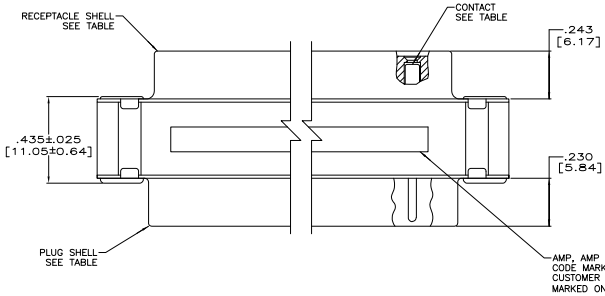
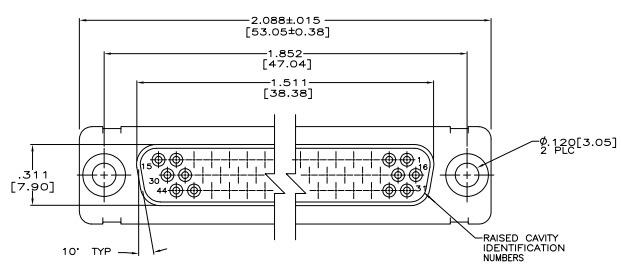
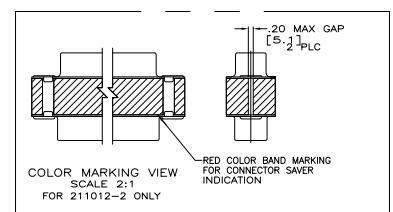


REV	DATE	DESCRIPTION	BY	CHK	APP
DF	DO				
Z		REV PER ECO-018048			



- CONTACTS INCLUDED IN ASSEMBLY.
- MATL: STEEL, PER ASTM-A-109.
- FINISH: CADMIUM PER QQ-P-416.
- MATL: BRASS PER ASTM-B-36.
- FINISH: PLATED ZINC .00020 MIN THK PER ASTM-B-633. YELLOW CHROMATE FINISH.
- CONTACT
 BODY MATL: BERYLLIUM COPPER PER ASTM-B-197.
 BODY FINISH: PLATED GOLD, .000050 MIN THK PER MIL-G-45204 OVER NICKEL, .000050 MIN THK PER QQ-N-290.
 HOOD MATL: STAINLESS STEEL PER ASTM-A-240.
 HOOD FINISH: PASSIVATED PER QQ-P-35
- FINISH: PLATED GOLD, .000050 MIN THK PER MIL-G-45204 OVER COPPER FLASH
- FINISH: PLATED GOLD, .000050 MIN THK PER MIL-G-45204 OVER COPPER, .000100 MIN THK PER MIL-C-14550.
- CONTACT
 BODY MATL: BERYLLIUM COPPER PER ASTM-B-197.
 BODY FINISH: PLATED GOLD, .000050 MIN THK PER MIL-G-45204 OVER COPPER, .000100 MIN THK PER MIL-C-14550.
- HOOD MATL: COPPER ALLOY PER QQ-B-613.
 FINISH: PLATED GOLD, .000050 MIN THK PER MIL-G-45204 OVER COPPER, .000100 MIN THK PER MIL-C-14550.
- POSITIONS 37 & 38 DO NOT HAVE A CONTACT OR CLIP LOADED.
- FINISH: PLATED ZINC PER ASTM-B-633 .000200 MIN THK WITH SUPPLEMENTARY CHROMATE (C-3+).



CONTACT	EYELET	SHELLS	CONTACT	CUSTOMER P/N	PART NO.
△	△	△	△	-	5-211012-7
△	△	△	△	-	211012-7
-	△	△	△	4U884 SOCN R10002677-010B	211012-6
-	△	△	△	2A091-003W-001	211012-5
-	△	△	△	-	211012-4
-	△	△	△	-	211012-3
-	△	△	△	(1J02-10B)	211012-2
-	△	△	△	-	211012-1

OBSOLETE

THIS DRAWING IS A CONTROLLED DOCUMENT. DATE: 11-13-98
 CONTROLLED BY: TYS ELECTRONICS CORPORATION
 DRAWING NO: 11-13-98
 TITLE: CONNECTOR SAVER, AMP/LIMIT 44 POSN, SIZE 3, SERIES 90
 CUSTOMER DRAWING: A100779 (C=211012)
 SCALE: 2:1
 SHEET: 1 OF 7