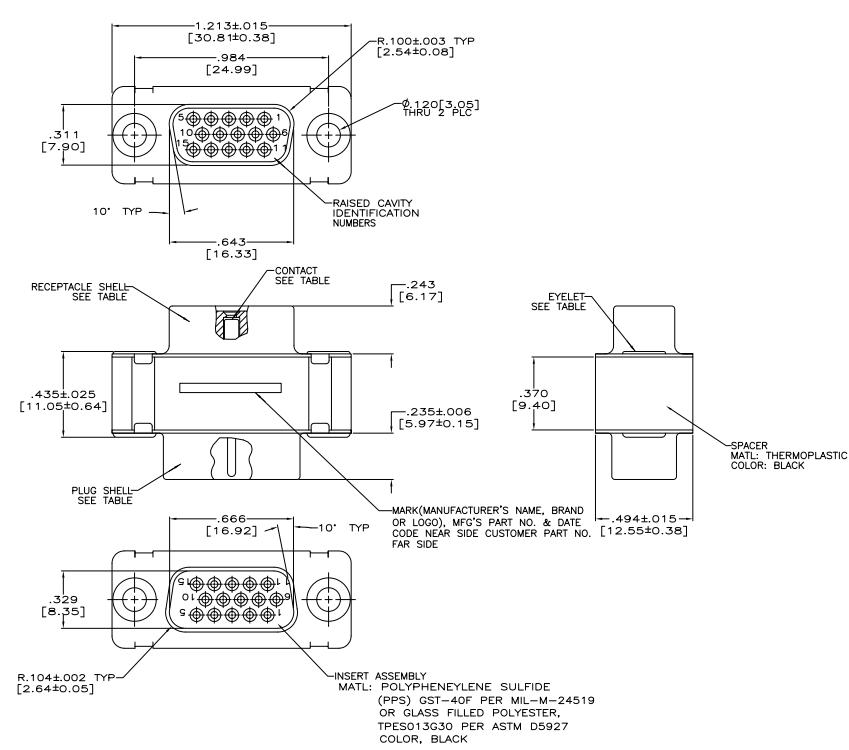
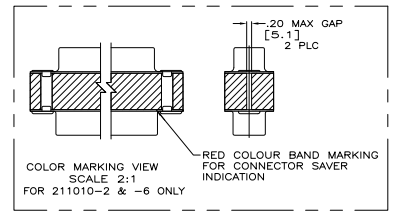


REV	DATE	DESCRIPTION	BY	CHK	APP
DF	DO				
Z		REVISED PER ECO-08-028464			



- 1 CONTACTS INCLUDED IN ASSEMBLY.
- △ MATL: STEEL, PER ASTM-A-109.
- △ FINISH: CADMIUM PER QQ-P-416.
- △ CONTACT
 BODY MATL: BERYLLIUM COPPER PER ASTM-B-197.
 BODY FINISH: PLATED GOLD, .000050 MIN THK PER MIL-G-45204 OVER NICKEL, .000050 MIN THK PER QQ-N-290.
- HOOD MATL: STAINLESS STEEL PER ASTM-A-167.
 HOOD FINISH: PASSIVATED PER ASTM-A-380
- △ FINISH: PLATED ZINC .00020 MIN THK PER ASTM-B-633. YELLOW CHROMATE FINISH.
- △ MATL: BRASS PER ASTM-B-36.
- △ FINISH: PLATED GOLD, .000050 MIN THK PER MIL-G-45204 OVER COPPER, .000100 MIN THK PER MIL-C-14550.
- △ CONTACT
 BODY MATL: BERYLLIUM COPPER PER ASTM-B-197.
 BODY AND HOOD FINISH: PLATED GOLD, .000050 MIN THK PER MIL-G-45204 OVER COPPER, .000100 MIN THK PER MIL-C-14550.
- HOOD MATL: BRASS PER ASTM-B-36
- △ FINISH: PLATED ZINC PER ASTM-B-633 .000200 MIN THK WITH SUPPLEMENTARY CHROMATE (Cr3+).



EYELET	SHELLS	CONTACT	CUSTOMER P/N	PART NO.
△ △	△ △ △ △	△	-	5-211010-1
△ △	△ △ △ △	△	R10002677-0106	211010-6
△ △	△ △ △ △	△	2A091-001W	211010-5
△ △	△ △ △ △	△	-	211010-4
△ △	△ △ △ △	△	(1J02-106)	211010-2
△ △	△ △ △ △	△	-	211010-1

THIS DRAWING IS A CONTROLLED DOCUMENT.

DESIGNED BY	DESIGNED	DATE	BY	DATE
DRAWN BY	DRAWN	DATE	BY	DATE
CHECKED BY	CHECKED	DATE	BY	DATE
APPROVED BY	APPROVED	DATE	BY	DATE

Customer Drawing: A100779, Drawing No: 211010, Size: 4:1, Sheet: 1 of 1