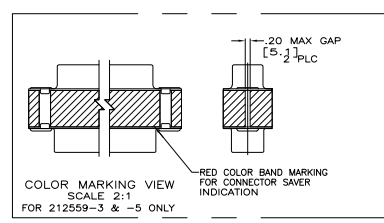
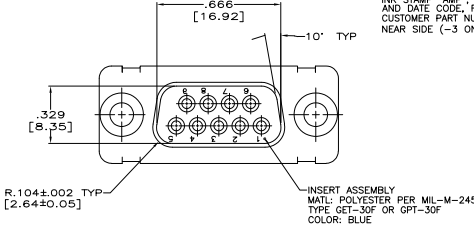
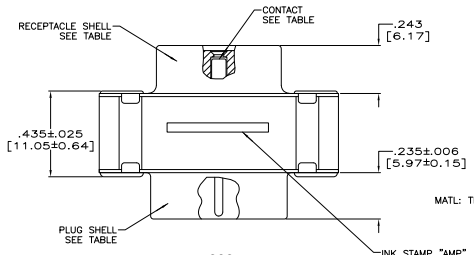
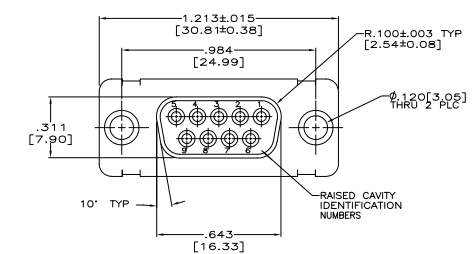


REV	DATE	BY	CHK	APP	REVISIONS
DF	DO				
P					REV PER ECU 05-014863
					08FEB06 BL CT



- CONTACTS INCLUDED IN ASSEMBLY.
- MATL: STEEL, PER ASTM-A-109.
- FINISH: CADMIUM PER QQ-P-416.
- CONTACT
- BODY MATL: BERYLLIUM COPPER PER ASTM-B-197. BODY FINISH: PLATED GOLD, .000050 MIN THK PER ASTM-B-488 OVER NICKEL, .000050 MIN THK PER QQ-N-290.
- HOOD MATL: STAINLESS STEEL PER ASTM-A-167. HOOD FINISH: PASSIVATED PER ASTM-A-380.
- FINISH: PLATED ZINC .00020 MIN THK PER ASTM-B-633. YELLOW CHROMATE FINISH.
- MATL: BRASS PER ASTM-B-36.
- FINISH: PLATED GOLD, .000050 MIN THK PER ASTM-B-488 OVER COPPER, .000100 MIN THK PER MIL-C-14550.
- CONTACT
- BODY MATL: BERYLLIUM COPPER PER ASTM-B-197. BODY AND HOOD FINISH: PLATED GOLD, .000050 MIN THK PER MIL-C-14550.
- HOOD MATL: BRASS PER ASTM-B-36
- FINISH: PLATED ZINC PER ASTM-B-633 .000200 MIN THK WITH SUPPLEMENTARY CHROMATE (Cr3+).

OBsolete	Eyelet	Shells	Contact	Customer P/N	Part No.
					5-212559-1
				4U884 SOCN R10002677-0101	212559-5
					212559-4
				(1J02-101)	212559-3
					212559-2
					212559-1

THIS DRAWING IS A CONTROLLED DOCUMENT. DATE: 11-07-04

DESIGNED BY: J. THOMPSON 11-07-04  
 CHECKED BY: J. MANTON 11-08-04  
 DRAWN BY: J. MANTON 11-08-04  
 PROJECT: 11-08-04

THIS DRAWING IS A CONTROLLED DOCUMENT. DATE: 11-07-04

DESIGNED BY: J. THOMPSON 11-07-04  
 CHECKED BY: J. MANTON 11-08-04  
 DRAWN BY: J. MANTON 11-08-04  
 PROJECT: 11-08-04

CONNECTIONS: 9 POSITION, SIZE 1, SERIES 109

SIZE: A1 00779 (C)=212559

CUSTOMER DRAWING