

4

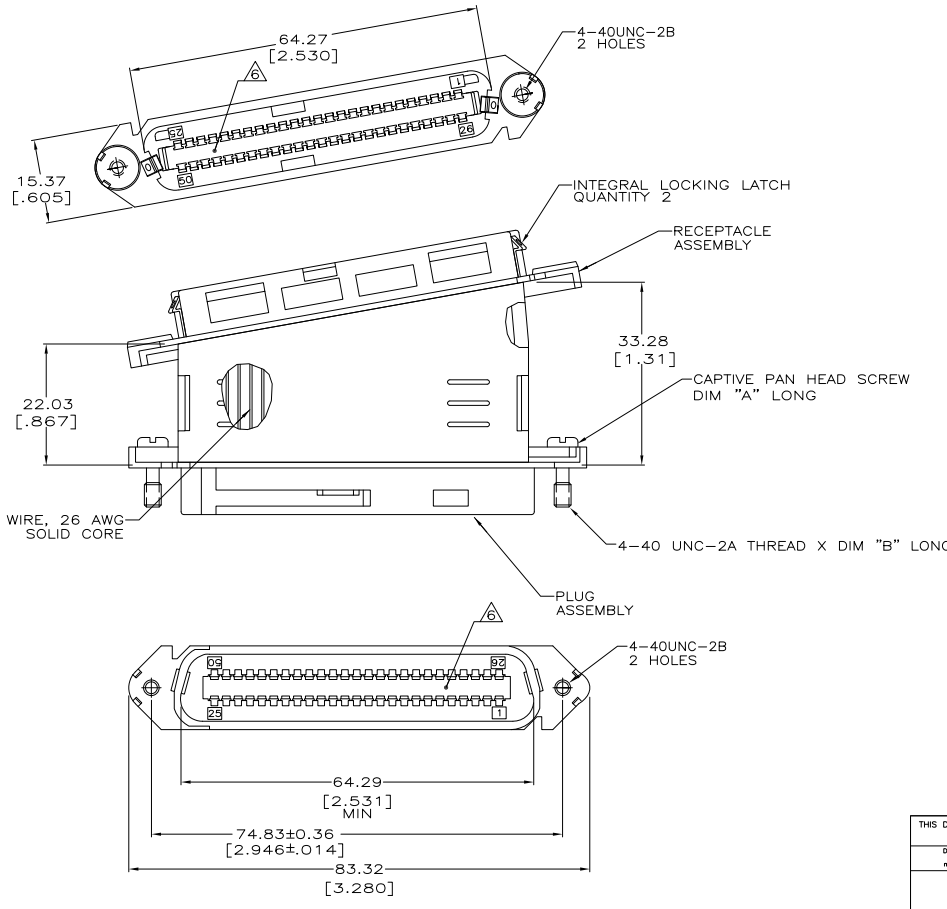
3

2

1

THIS DRAWING IS UNPUBLISHED. RELEASED FOR PUBLICATION.  
 © COPYRIGHT 2005 BY TYCO ELECTRONICS CORPORATION. ALL RIGHTS RESERVED.

LOC	DIST	REVISIONS				
GP	00	F	LR	DATE	BY	APP
		B		REVISED PER ECO-08-007327	02OCT08	BM WM



- 1. DIMENSIONS ARE MAXIMUM UNLESS OTHERWISE SPECIFIED.
- 2. LIKE NUMBERED TERMINALS ON BOTH CONNECTORS ARE ELECTRICALLY COMMON.
- 3. MATERIAL: HOUSING AND COVERS - POLYPHENYLENE OXIDE, BLACK.  
TERMINAL - HIGH STRENGTH COPPER ALLOY PLATED WITH EITHER 0.76µm [.000030] MIN GOLD OR GOLD FLASH OVER PALLADIUM NICKEL PLATE, 0.76µm [.000030] MIN TOTAL ON MATING SURFACE, 1.27µm [.000050] MIN NICKEL UNDERPLATE OVER ENTIRE TERMINAL.  
LATCH - ZINC PLATED CARBON STEEL.
- 4. THE CONTACT SURFACES OF THE TERMINALS ARE COATED WITH LUBRICANT.
- 5. CENTER-TO-CENTER SPACING OF TERMINALS IS 2.16 [.085] NOMINAL.
- 6. CORING MAY OR MAY NOT APPEAR AND IS AT THE DISCRETION OF AMP INCORPORATED.

2.54 [.100]	8.89 [.350]	5406952-2
4.45 [.175]	10.92 [.430]	5406952-1
DIM "B"		PART NUMBER
DIM "A"		

THIS DRAWING IS A CONTROLLED DOCUMENT.		DWG: C.PETERS 235EPOS CHK: W.MILLIMES 235EPOS W.MILLIMES 235EPOS APD: M.WALMSLEY 235EPOS PRODUCT SPEC:		Tyco Electronics Corporation Harrisburg, Pa 17105-3608 <b>Tyco Electronics</b>	
DIMENSIONS: mm [INCHES] TOLERANCES UNLESS OTHERWISE SPECIFIED: 0 PLG ± .005 1 PLG ± .005 2 PLG ± .005 3 PLG ± .005 4 PLG ± .005 ANGLES ± .5°		WEAR ADAPTER ASSEMBLY, PLUG/RECEPTACLE, 10 DEGREE, 50 POSITION		RESTRICTED TO	
MATERIAL: 3		FINISH: 3		APPLICATION SPEC: - WEIGHT: - SIZE: A2 CASE CODE: 00779 DRAWING NO: C=5406952 CUSTOMER DRAWING	
				SCALE: 2:1 SHEET 1 OF 1 REV B	

AMP 1471-9 REV 31MMR2000

5406952

A