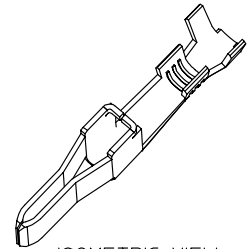
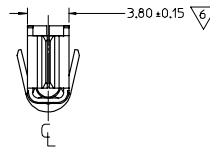
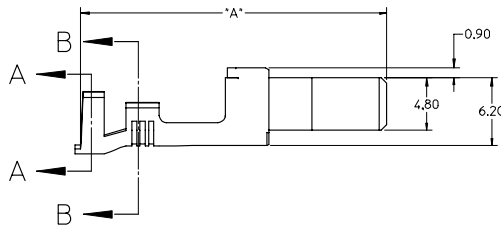
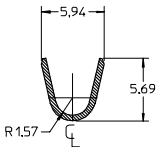


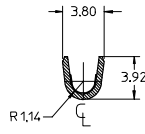
NOTES:
 1. MATERIAL: COPPER ALLOY 151, 0.50mm THICK.
 2. PLATING:
 SELECT GOLD: 0.00076 MIN. SELECT. GOLD IN CONTACT AREA,
 0.00254 MN. SELECT *TIN IN CRIMP AREA, OVER 0.00127 NICKEL.
 OVERALL *TIN: 0.00254 MN, BRIGHT *TIN OVER 0.00127 MIN, NICKEL
 * THE PRIMARY SHIPPING CARTON WILL BE LABELED 'COMPLIANT TO ROHS
 DIRECTIVE 2002/95/EC AND ELV ANNEX II OF DIRECTIVE 2000/53/EC'.
 CARTONS WITHOUT THIS LABEL MAY CONTAIN PRODUCT WITH TIN-LEAD.
 3. PRODUCT SPECIFICATION: PS-42815-001.
 4. PART IS DESIGN IN METRIC.
 5. TERMINALS FOR USE WITH STRANDED WIRE ONLY.
 STRANDED TINNED WIRE IS RECOMMENDED.
 ∇ AFTER CRIMPING, THIS DIMENSION = 3.55mm MIN.
 ∇ AFTER CRIMPING, THIS DIMENSION = 2.25mm MAX.
 6. CRIMP SPECIFICATION: 638301000.
 ∇ WHEN USING TIN-PLATED TERMINALS FOR APPLICATIONS
 INVOLVING VIBRATION AND/OR THERMAL CYCLING,
 MOLEX STRONGLY RECOMMENDS THE USE OF NYE LUBRICANT.
 NYOGEL 760G, ON THE MATING AREA OF THE TERMINAL.
 LUBRICANT SHOULD BE APPLIED AFTER THE TERMINALS ARE
 INSERTED INTO THE HOUSING.



ISOMETRIC VIEW



SECTION A-A
INSULATOR CRIMP



SECTION B-B
CONDUCTOR CRIMP

MATERIAL NO.	CONFIGURATION	DM. 'A'	PLATING
42817-0041	STANDARD	27.60	TIN ∇
42817-0141	MAKE-FIRST/BREAK-LAST	29.60	TIN ∇
42817-0042	STANDARD	27.60	SELECT GOLD
42817-0142	MAKE-FIRST/BREAK-LAST	29.60	SELECT GOLD

LEAD-FREE EC NO: UCP2004-2391 DRAWN: MCARRANZ004/06/07 CHKD: JCOMERC 2004/06/07 APPR: JCOMERC 2004/06/10	QUALITY SYMBOLS ∇-0 ∇-0	GENERAL TOLERANCES (UNLESS SPECIFIED)		SCALE 4:1	DESIGN UNITS METRIC	THIRD ANGLE PROJECTION	REVISE ON CAD ONLY	
		mm	INCH					
DESCRIPTION B1	DRAFT WHERE APPLICABLE MUST REMAIN WITHIN DIMENSIONS	4 PLACES ± --- ± ---		DIMENSION STYLE MM ONLY	DRAWN BY MFIRLEJ	DATE 2002/05/15	TITLE MINIFIT SR. MALE CRIMP TERMINAL, 14-16 AWG GOLD PLATED	
		3 PLACES ± --- ± .010						
		2 PLACES ± 0.25 ± .016						
		1 PLACE ± 0.40 ± ---						
		ANGULAR ± 1/2°		CHECKED BY JCOMERC	DATE 2002/05/15	MATERIAL NO. SEE CHART	DOCUMENT NO. SD-42817-020	SHEET NO. 1 OF 1

MOLEX INCORPORATED