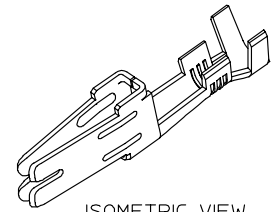
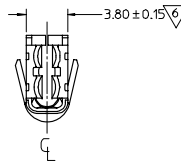
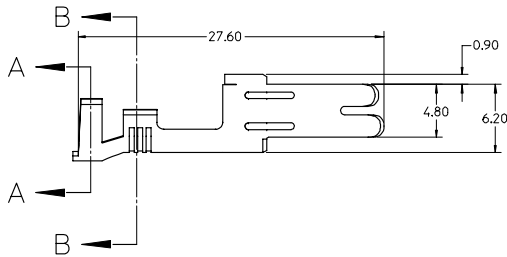
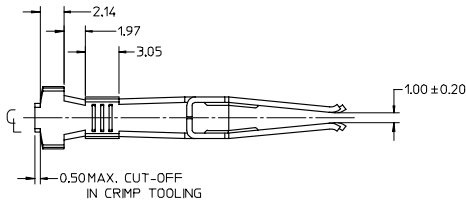


NOTES:

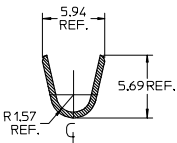
- MATERIAL: COPPER ALLOY 151, 0.50mm THICK.
- PLATING:
OVERALL *TIN: 0.00254 MIN BRIGHT TIN
OVER 0.00127 MIN NICKEL.

SELECT GOLD: 0.00076 MIN. SELECT GOLD IN CONTACT AREA,
0.00127 MIN. SELECT *TIN IN CRIMP AREA, OVER 0.00127 MIN NICKEL.

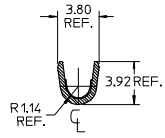
*THE PRIMARY SHIPPING CARTON WILL BE LABELED "COMPLIANT TO RoHS
DIRECTIVE 2002/95/EC AND ELV ANNEX II OF DIRECTIVE 2000/53/EC".
CARTONS WITHOUT THIS LABEL MAY CONTAIN PRODUCT WITH TIN-LEAD.
- PRODUCT SPECIFICATION: PS-42815-001.
- PART IS DESIGNED IN METRIC.
- TERMINALS FOR USE WITH STRANDED WIRE ONLY.
STRANDED TINNED WIRE IS RECOMMENDED.
- AFTER CRIMPING, THIS DIMENSION IS 3.55mm MINIMUM.
- CRIMP SPECIFICATION: 638301000.
- WHEN USING TIN-PLATED TERMINALS FOR APPLICATIONS
INVOLVING VIBRATION AND/OR THERMAL CYCLING,
MOLEX STRONGLY RECOMMENDS THE USE OF NYE LUBRICANT,
NYOGEL 760G, ON THE MATING AREA OF THE TERMINAL.
LUBRICANT SHOULD BE APPLIED AFTER THE TERMINALS ARE
INSERTED INTO THE HOUSING.



ISOMETRIC VIEW



SECTION A-A
INSULATION CRIMP



SECTION B-B
CONDUCTOR CRIMP

MATERIAL NO.		PLATING		SCALE		DESIGN UNITS		THIRD ANGLE PROJECTION		REVISE ON CAD ONLY	
42815-0041		TIN		4:1		METRIC		MINIFIT SR. FEMALE CRIMP TERMINAL, 14-16 AWG GOLD PLATED			
42815-0042		SELECT GOLD				MM ONLY		MATERIAL NO.		DOCUMENT NO.	
REVISED SECTIONS		QUALITY SYMBOLS		GENERAL TOLERANCES (UNLESS SPECIFIED)		DIMENSION STYLE		DATE		SHEET NO.	
EC NO: UCP2006-1068		▲ 0		mm INCH		MM ONLY		DRAWN BY		1 OF 1	
DRAWN: JCOMERC 2005/11/07		▽ 0		4 PLACES ± --- ± ---				DATE		INCORPORATED	
CHKD: JCOMERC 2005/11/07				3 PLACES ± --- ± .010				2002/05/15		MOLEX INCORPORATED	
APPR: JCOMERC 2005/11/08				2 PLACES ± 0.25 ± .016				CHECKED BY		SD-42815-020	
REV				1 PLACE ± 0.40 ± ---				DATE		THIS DRAWING CONTAINS INFORMATION THAT IS PROPRIETARY TO MOLEX INCORPORATED AND SHOULD NOT BE USED WITHOUT WRITTEN PERMISSION	
				ANGULAR ± 1/2°				JCOMERC 2002/05/15			
				DRAFT WHERE APPLICABLE				APPROVED BY			
				MUST REMAIN WITHIN DIMENSIONS				DATE			
								JCOMERC 2002/05/15			