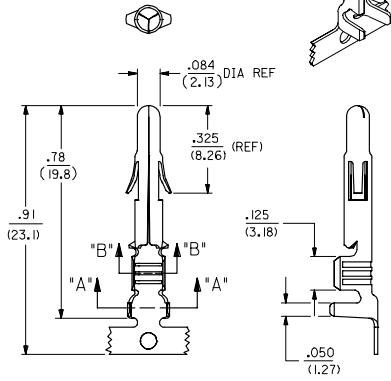
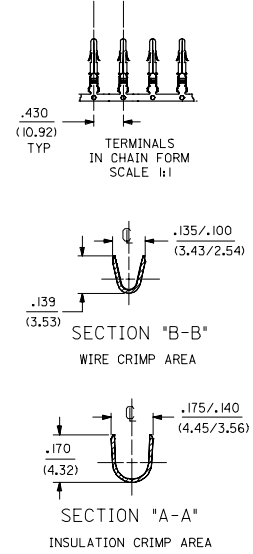
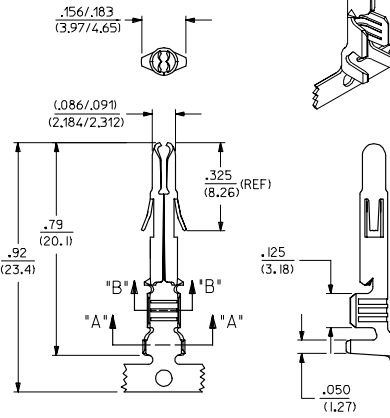


SOLID PIN TERMINAL
42023-1***



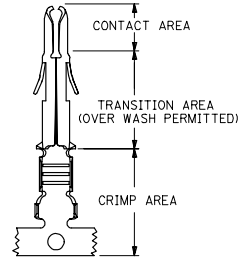
SPLIT PIN TERMINAL
42023-2***



SEE SHEET2 FOR CHART, MATERIAL, PLATING, NOTES, AND CRIMP OPTIONS

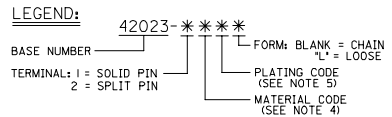
| | | | | | | | | |
|---|-------------------------------|---|-------|-----------------|---------------|--------------|------------------------|--|
| IEC NO: 12005-0202 DRAWN BY: SUDHIR 2004/09/27 CHKD: KPRASAD 2004/09/28 APPR: KPRASAD 2004/09/28 | QUALITY SYMBOLS ▽=0 ▽=0 | GENERAL TOLERANCES (UNLESS SPECIFIED) | | DIMENSION STYLE | SCALE | DESIGN UNITS | THIRD ANGLE PROJECTION | |
| | | | | IN/MM | 4:1 | INCH | | |
| | | 4 PLACES ±--- | ±--- | | | | | |
| | | 3 PLACES ±--- | ±.010 | | | | | |
| | | 2 PLACES ±0.25 | ±.015 | | | | | |
| | | 1 PLACE ±0.38 | ±--- | | | | | |
| | | ANGULAR ±1/2° | | | | | | |
| | | DRAFT WHERE APPLICABLE MUST REMAIN WITHIN DIMENSIONS | | MATERIAL NO. | DOCUMENT NO. | SHEET NO. | | |
| | | | | SEE CHART | SD-42023-**** | 1 OF 2 | | |
| | | THIS DRAWING CONTAINS INFORMATION THAT IS PROPRIETARY TO MOLEX INCORPORATED AND SHOULD NOT BE USED WITHOUT WRITTEN PERMISSION | | | | | | |

| ENG. NO. | EDP NO. | FINISH (REF) | CONTACT AREA (REF) | CRIMP AREA (REF) | MATERIAL (REF) | TERMINAL TYPE | WIRE SIZE | INSULATION DIAMETER |
|--------------|-------------|--------------|--------------------|-----------------------|----------------|---------------|-------------|---------------------|
| X-42023-1A1 | PRELIMINARY | SDES-88-P901 | ---- | ---- | C26000 | SOLID | #14-#20 AWG | .060-.130 |
| X-42023-1A1L | PRELIMINARY | SDES-88-P901 | ---- | ---- | C26000 | SOLID | #14-#20 AWG | .060-.130 |
| 42023-2A1 | 002-08-2003 | SDES-88-P901 | ---- | ---- | C26000 | SPLIT | #14-#20 AWG | .060-.130 |
| 42023-2A1L | 002-08-2004 | SDES-88-P901 | ---- | ---- | C26000 | SPLIT | #14-#20 AWG | .060-.130 |
| 42023-2B1 | 002-08-2005 | SDES-88-P901 | ---- | ---- | C51000 | SPLIT | #14-#20 AWG | .060-.130 |
| 42023-2B1L | 002-08-2006 | SDES-88-P901 | ---- | ---- | C51000 | SPLIT | #14-#20 AWG | .060-.130 |
| 42023-2A2 | 002-08-2007 | SEE NOTE 5 | .000030 MIN GOLD | .000100 MIN MATTE TIN | C26000 | SPLIT | #14-#20 AWG | .060-.130 |
| 42023-2A2L | 002-08-2008 | SEE NOTE 5 | .000030 MIN GOLD | .000100 MIN MATTE TIN | C26000 | SPLIT | #14-#20 AWG | .060-.130 |
| 42023-2B2 | 002-08-2009 | SEE NOTE 5 | .000030 MIN GOLD | .000100 MIN MATTE TIN | C51000 | SPLIT | #14-#20 AWG | .060-.130 |
| 42023-2B2L | 002-08-2010 | SEE NOTE 5 | .000030 MIN GOLD | .000100 MIN MATTE TIN | C51000 | SPLIT | #14-#20 AWG | .060-.130 |



PLATING REGIONS
 APPLIES TO GOLD PLATED TERMINALS ONLY

- NOTES:**
- PIN TERMINALS FOR USE WITH THE .084/(2.13) SERIES HOUSINGS:
 PLUG (42021-**) CAP (42022-**)
 - PIN TERMINALS MATE WITH SOCKET TERMINALS: .084/(2.13) DIA. SERIES (42024-****).
 - TERMINALS FINISHED IN CHAIN UNLESS SPECIFIED LOOSE. 'L' SUFFIX INDICATES LOOSE FORM. (SEE TABLE)
 - MATERIAL: .012/(0.30) THICK STRIP:
 A = BRASS, *C26000, PER SMES-124-C7.
 B = PHOSPHOR BRONZE, *C51000, PER SMES-124-E7.
 - FINISH:
 1 = HOT TIN DIP 20 m.l./(.51 MICRONS) MINIMUM (PER SDES-88-P901).
 2 = 30 M.l (0.75 MICRONS) MIN GOLD & 100 M.l (2.50 MICRONS) MIN SELECT TIN
 50 M.l (1.25 MICRONS) MIN NICKEL OVERALL
 - CRIMP RANGE: SEE CHAIR.
 - PRODUCT SPECIFICATION PS-42022-0001 APPLIES.



| | | | | | | |
|---|-------------------|---------------------------------------|--|--|-------------------|------------------------|
| IEC NO: 12005-0302 DRAWN: SUDHIR 2004/09/27 CHKD: KPRASAD 2004/09/27 APPR: KPRASAD 2004/09/27 REV | QUALITY SYMBOLS | GENERAL TOLERANCES (UNLESS SPECIFIED) | DIMENSION STYLE IN/MM | SCALE --- | DESIGN UNITS INCH | THIRD ANGLE PROJECTION |
| | ▽=0 | 4 PLACES ±--- ±--- | DRAWN BY SUDHIR DATE 2004/09/27 | TITLE TERMINAL, PIN .084/(2.13) DIA. SERIES | | |
| | ▽=0 | 3 PLACES ±--- ±--- | CHECKED BY KPRASAD DATE 2004/09/27 | MATERIAL NO. SEE CHART DOCUMENT NO. SD-42023-**** SHEET NO. 2 OF 2 | | |
| | | 2 PLACES ±--- ±--- | APPROVED BY KPRASAD DATE 2004/09/27 | MATERIAL NO. SEE CHART DOCUMENT NO. SD-42023-**** SHEET NO. 2 OF 2 | | |
| | 1 PLACE ±--- ±--- | ANGULAR ±---° | DRAFT WHERE APPLICABLE MUST REMAIN WITHIN DIMENSIONS | | | |
| THIS DRAWING CONTAINS INFORMATION THAT IS PROPRIETARY TO MOLEX INCORPORATED AND SHOULD NOT BE USED WITHOUT WRITTEN PERMISSION | | | | | | |