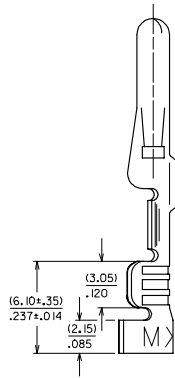
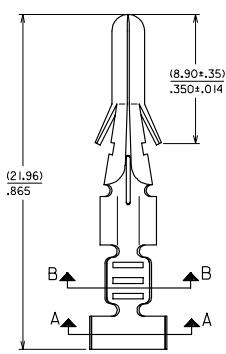
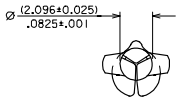


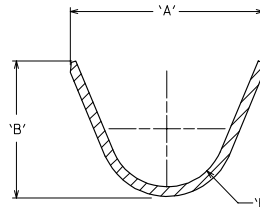
10 9 8 7 6 5 4 3 2 1

**NOTES:**

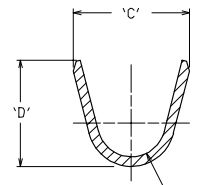
1. THIS TERMINAL FOR USE WITH HOUSING P/N. 8981-4M\*
2. FINISH: (.00089)/.000035 MIN. TIN/LEAD OR TIN OVER (.00051)/.000020 MIN. NICKEL.
3. MATERIAL: (.025)/.010 THK PHOS BRONZE, ALLOY CA 51000.



PLATING	ENG. NO.	ENG. NO.	FORM	'A'	'B'	'C'	'D'	'E'	'F'
TIN/LEAD	002-08-1234	8980-6C	CHAIN, 14-20 AWG WIRE	(4.44)	(3.39)	(3.02)	(3.61)	(1.23)	(0.61)
	002-08-1235	8980-6L	LOOSE, 14-20 AWG WIRE	.175	.133	.119	.142	.048	.024
	002-08-1237	8980-6L1	LOOSE, 18-22 AWG WIRE	.129	.102	.096	.102	.036	.021
TIN	002-08-1334	8980-6C-LF	CHAIN, 14-20 AWG WIRE	(4.44)	(3.39)	(3.02)	(3.61)	(1.23)	(0.61)
	002-08-1335	8980-6L-LF	LOOSE, 14-20 AWG WIRE	.175	.133	.119	.142	.048	.024
	002-08-1336	8980-6L1-LF	CHAIN, 18-22 AWG WIRE	(3.28)	(2.58)	(2.44)	(2.58)	(0.91)	(0.53)
	002-08-1337	8980-6L1-LF	LOOSE, 18-22 AWG WIRE	.129	.102	.096	.102	.036	.021



SECTION A-A



SECTION B-B

LEAD FREE CONVERSION EC NO. S2005-0197 DRAWN BY: 2004/10/06 CHKD: PTLIM APPR: SKTCH 2004/10/06 2004/10/06	QUALITY SYMBOLS ▽=0 ▽=0	GENERAL TOLERANCES (UNLESS SPECIFIED)		DIMENSION STYLE MM/IN		SCALE NTS	DESIGN UNITS METRIC	THIRD ANGLE PROJECTION		
		mm	INCH	DRAWN BY	DATE	TITLE				
		4 PLACES ± --- ± ---		JWAN	1994/11/03	PIN CRIMP TYPE				
		3 PLACES ± --- ± .008		CHECKED BY	DATE	DIA. (2.13) / .084				
2 PLACES ± 0.20 ± ---		ERPOH	1994/11/04	MATERIAL NO.						
1 PLACE ± --- ± ---		APPROVED BY	DATE	DOCUMENT NO.						
		SKTOH	1994/11/04	SD-8980-6*						
DRAFT WHERE APPLICABLE MUST REMAIN WITHIN DIMENSIONS		SEE TABLE		THIS DRAWING CONTAINS INFORMATION THAT IS PROPRIETARY TO MOLEX INCORPORATED AND SHOULD NOT BE USED WITHOUT WRITTEN PERMISSION						
		SIZE A3		SHEET NO. 1 OF 1						

9 8 7 6 5 4 3 2 1