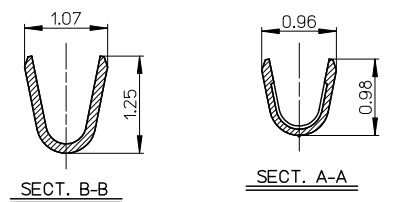
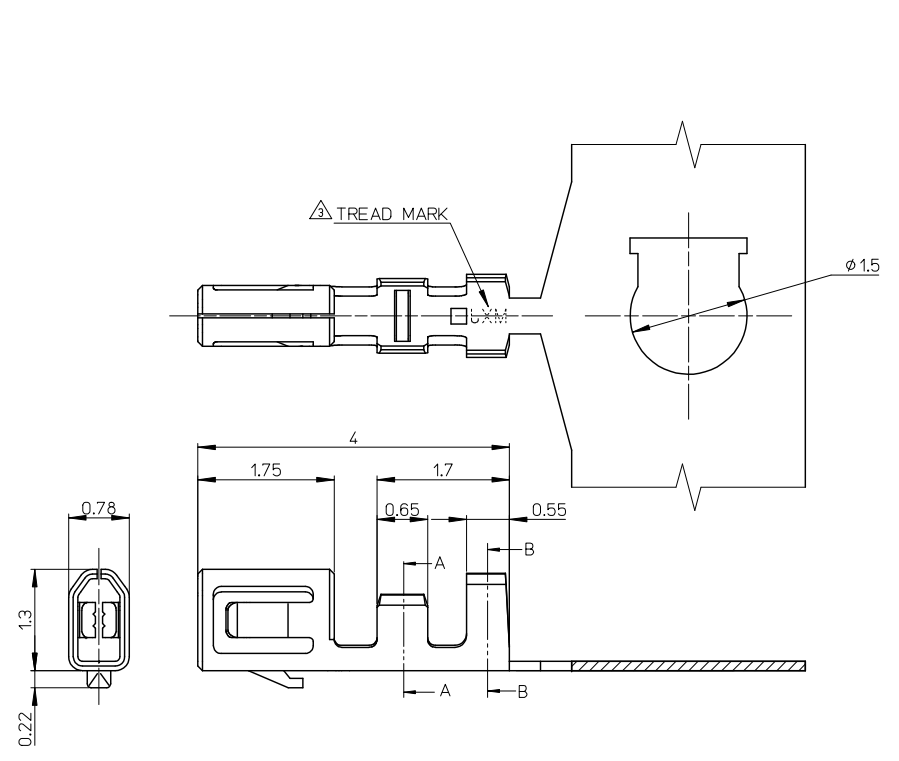


10 9 8 7 6 5 4 3 2 1



NOTES.

- 適合ハウジング: 501330-**** / 501939-****
APPLICABLE HOUSING: 501330-**** / 501939-****
 - メッキ仕様
PLATING
錫メッキ: 1.0μmMIN. リフロー処理(前メッキ)
Sn: 1.0μmMIN. REFLOW TREATMENT (PRE-PLATED)
- △ 刻印は裏面から実施
PUNCH SIDE: OTHER SIDE
- MXJ 金型番号(番号無しの製品もあります.)
Die No. (There is Non-Mark Item)
- TREAD MARK

501334-0100	バラ状 LOOSE
501334-0000	連鎖状 CHAIN
MATERIAL NO.	端子形状 FORM

MATERIAL リン青銅 PHOSPHOR BRONZE I=0.12	REVISED EC NO: J2009-0651 DRAWN BY: IRWNRKAKATA 2008/09/16 CHECKED BY: CHYKDHMATSUNOTO 2008/09/16 APPROVED BY: APPRNRKIKITA 2008/09/16 DESCRIPTION	GENERAL TOLERANCES (UNLESS SPECIFIED)	DIMENSION STYLE MM ONLY	SCALE 20:1	DESIGN UNITS METRIC	THIRD ANGLE PROJECTION	
FINISH SEE NOTE		10 UNDER ±0.2	DRAWN BY: NYOSHIDA 2004/07/29	TITLE 1.0 WIRE TO BOARD CONN. CRIMP REC TERMINAL (SN) -LEAD FREE-			
WIRE RANGE AWG #28-32		10 OVER 30 UNDER ±0.25	CHECKED BY: MYAGI 2004/07/29	APPROVED BY: MIYAZAWA 2004/07/29	MATERIAL NO. SEE TABLE	DOCUMENT NO. SD-501334-001	SHEET NO. 1 OF 1
INS. RANGE φ0.4-0.8		30 OVER ±0.3	ANGULAR ±3 °	DRAFT WHERE APPLICABLE MUST REMAIN WITHIN DIMENSIONS			SIZE A3