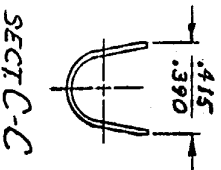
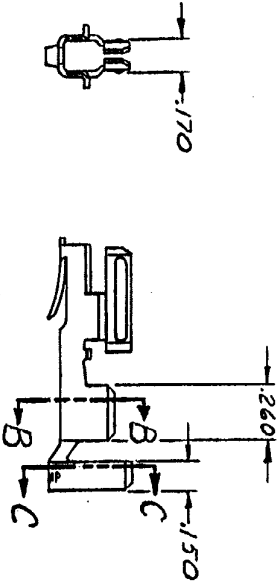
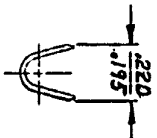
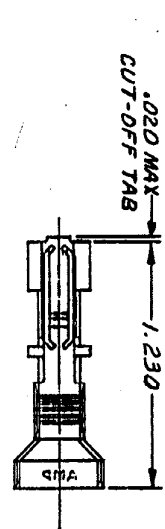


DRAWING MADE IN THIRD ANGLE PROJECTION

© COPYRIGHT 1977 BY AMP INCORPORATED, HARRISBURG, PA.
 ALL INTERNATIONAL RIGHTS RESERVED. AMP INCORPORATED PRODUCTS
 COVERED BY U. S. AND FOREIGN PATENTS AND/OR PATENTS PENDING.



REVISIONS		1	Loc	S	dist
P	ZONE	LTR	DESCRIPTION	DATE	APPROVED
✓		O	REL. DWG: M-4121	2-11-77	ME
✓		A	REVISED PER M-4428	2-25-77	DA / B.H.
✓		A1	RESTORATION	4-28-77	RS / S.J.
✓		B	OBSOLETE - 2 & SHEET 2 CM-473	3-2-80	ASL / RS
✓		C	WAS LOC CM, REVISED	8-18-87	ME

UNLESS OTHERWISE SPECIFIED, DIMENSIONS ARE IN INCHES. TOLERANCES ON ANGLES ± 1/2°		CONTRACT NO. 2-11-77	
MATERIAL PHOS BRZ		DR. 2/2/77	
FINISH TIN		CHK. 2/2/77	
APPRO. [Signature]		DATE 3/4/77	
DESIGN APPRO. [Signature]		DATE 3/15/77	
OTHER APPRO.			
NAME: TERMINAL, HIGH CURRENT, HERMAPHRODITIC, LOOSE PIECE		AMP INCORPORATED, Harrisburg, Pa.	
INSULATION: .360		WIRE RANGE: 12-8	
DIA MAX		PART NO: 350821-1	
SIZE: B		DRAWING NO: 350821	
CODE IDENT NO: 00779		SHEET 1 OF 1	

CUSTOMER DRAWING

AMP 1473-18 (7-73)