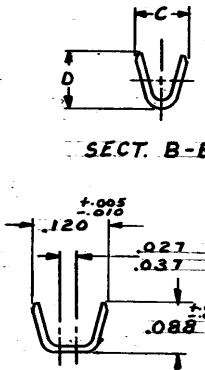
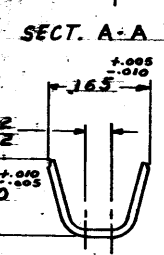
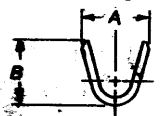
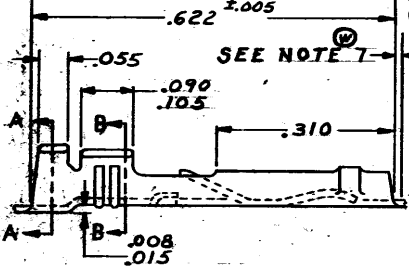
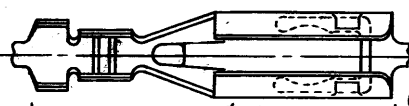


© 1942 BY AMP INCORPORATED. ALL RIGHTS RESERVED. AMP PRODUCTS COVERED BY PATENTS AND/OR PATENTS PENDING.

**NOTE:**

1. FOR CRIMPING INFORMATION SEE ENGR. SPEC. 108-9, 201.
2. AFTER ASSEMBLY INTO AND EXTRACTION FROM RECEPTACLE HOUSING THIS DIM. MAY GO TO A MIN. OF .050.
3. FOR SUPPLEMENTAL SPECIFICATIONS SEE 108-9, 004.
4. .000030 GOLD OVER .000030 NICKEL.
5. .000050 GOLD OVER .000030 NICKEL.
6. .000100 GOLD OVER .000030 NICKEL.
7. CUT-OFF TAB FOR LOOSE PIECE PARTS IS .005-.020 BOTH FRONT AND REAR.

REVISIONS				
SYM	ZONE	DESCRIPTION	DATE	APPROVAL
S		REDRAWN AND REVISED	V-488	7-17-4 M.S./A.S.H.
T		REVISED SHT. 1 & ADD SHT. 2	V-757	12-28-4 M.S./D.H.
V		REVISED SHT. 1 & 2	Y-278	3-16-66 M.S./D.H.
W		REVISED SHT. 1	Y-320	4-2-66 M.S./A.S.H.
W1		REVISED SHT. 1 & 2	Z-784 M.S.	12-3-70 D.H.
W2		REVISED SHT. 2	4-433 M.S.	4-24-75
W3		REVISED	6869 EXC	7-6-80



END OF LATCH CUTOUT PUNCH

LOCKING LATCH STOP

STABILIZING BOSS

SEE NOTE 2  
-.055  
MIN.

SECT. A-A

SECT. B-B

SECT. A-A  
(FOR 66021-2 ONLY)

SECT. B-B

AMP INFO LOC. CONTROL AK 3015	QTY REQD	NOMENCLATURE OR DESCRIPTION	PART OR IDENTIFYING NO.
LIST OF MATERIALS OR PARTS LIST:			
SIGNATURE		DATE	
OR <i>M. Smith</i>		10-7-6	
OR <i>D. Steide</i>		7/1/6	
OR <i>R. Sloman</i>		7/1/6	
OR <i>R. Hillis day</i>		7/1/6	
MATERIAL		NAME	
.0126 COMM. PHOS. BRONZE		AMP	
TREATMENT		TRADEMARK	
GOLD OVER NICKEL		AMP INCORPORATED HARRISBURG, PENNSYLVANIA	
REF. NOTES 1 & 2		AMP BLADE RECEPTACLE	
CODE IDENT NO	SIZE	NUMBER	
00779	B	66005	
CALC		ACTUAL	

CUSTOMER DRAWING 1

© 1957 AMP INCORPORATED. ALL RIGHTS RESERVED. AMP PRODUCTS COVERED BY PATENTS AND/OR PATENTS PENDING. APPROVED PER GOVT CONTRACT NO.

REVISIONS			
BY	ZONE	DESCRIPTION	DATE
WS			

PART NO.	A	B	C	D	WIRE RANGE	LNS. RANGE	FINISH	LOOSE P.C. P/N	STRIP P/N	L.P. P/N
66021-4	#	#	#	#	2*22 OR 2*20	2(.045-.072) DIA.	SEE NOTE 6	66026-4		
66027-3	.125	.125	.075	.060	28-24 AWG.	SPECIAL	SEE NOTE 5	66029-3		
66027-2	.125	.125	.075	.060	28-24 AWG.	SPECIAL	SEE NOTE 4	66029-2	66154-1	66158-1
66021-3	#	#	#	#	2*22 OR 2*20	2(.045-.072) DIA.	SEE NOTE 5	66026-3		
66021-2	#	#	#	#	2*22 OR 2*20	2(.045-.072) DIA.	SEE NOTE 4	66026-2	66153-1	66157-1
66009-3	.100	.090	.075	.060	28-24 AWG.	.030-.060 DIA.	SEE NOTE 5	66011-3		
66009-2	.100	.090	.075	.060	28-24 AWG.	.030-.060 DIA.	SEE NOTE 4	66011-2	66152-1	66156-1
66005-3	.120	.111	.090	.080	24-20 AWG.	.040-.080 DIA.	SEE NOTE 5	66010-3		
66005-2	.120	.111	.090	.080	24-20 AWG.	.040-.080 DIA.	SEE NOTE 4	66010-2	66151-1	66155-1

A. 000015 GOLD OVER 000030 MIN. NICKEL

OTHERWISE SPECIFIED  
DIMENSIONS ARE IN INCHES  
FRACTIONS DECIMALS ANGLES  
SEE SHEET 1  
GOLD OVER NICKEL  
SEE NOTES 4 & 5  
SHEET 1

AMP INFO PRINT DATE 3/29/57	QTY REQD	NOMENCLATURE OR DESCRIPTION	PART OR IDENTIFYING NO.	MATERIAL AND PLATING
LIST OF MATERIALS OR PARTS LIST				
SIGNATURE M. Smith J.S. Wade R. Sloman		DATE 12-29-56 4/2/57 4/2/57	AMP INCORPORATED HARRISBURG, PENNSYLVANIA	
SEE SHEET 1		AMP BLADE RECEPTACLE		
CODE SHEET NO. 00779	SIZE B	NUMBER 66005		

CUSTOMER DRAWING