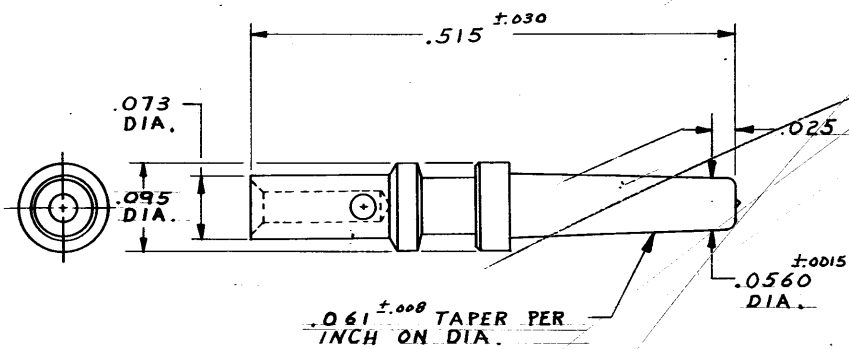


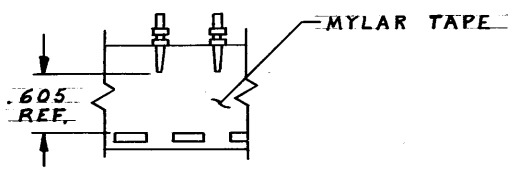
© 1961 BY AMP INCORPORATED. ALL RIGHTS RESERVED. AMP PRODUCTS COVERED BY PATENTS AND/OR PATENTS PENDING.

NUMBER 66051

ZONE	LTN	DESCRIPTION	DATE	APPROVED
E-1		REDRAWN AND REVISED 1678	4-18-68	m.s. dh.
F		LOC'S WAS AB, DIST 12 WAS 39	9347	11-8-72 JP
G		BRIGHT TIN-LEAD WAS TIN, EA 1818	6-18-81	DS
H		OBSOLETE - 7 E-B	ECN 53379	11-86 KA
J		REV PER DF-0351	VA	6/19/88



WIRE SIZE: # 24-22



TAPE MOUNTED PART
NO.S 66051-7, -8, -9.

	66051-9	.00003 GOLD OVER .00005 NICKEL
OBSOLETE	66051-8	SILVER -.0002 THICK
	66051-7	BRIGHT TIN-LEAD .0002 THICK
	66051-5	.0002 GOLD OVER .000050 NICKEL
	66051-4	.0001 GOLD OVER .0001 NICKEL
	66051-3	.00003 GOLD OVER .00005 NICKEL
OBSOLETE	66051-2	SILVER -.0002 THICK
	66051-1	BRIGHT TIN-LEAD .0002 THICK
	PART NO.	FINISH

UNLESS OTHERWISE SPECIFIED DIM. ARE IN INCHES. TOLERANCES ON DECIMALS: .015 ANGLES: 3/4°		CONTRACT NO. 4-18-68		AMP INCORPORATED HARRISBURG, PENNSYLVANIA	
MATERIAL BRASS		OR M Smith		NAME PIN, TAPER	
		CHK D S. Steide 5/10/68		"53" SERIES	
		APPROV. Houseth 5/16/68		SIZE B	CODE IDENT NO. 00779
		OTHER APPD		NUMBER 66051	
AMP INFO		HEAT TREAT		SCALE 10-1	WT CALC ACTUAL SHEET
LIC DF		FINISH SEE TABLE			