

4

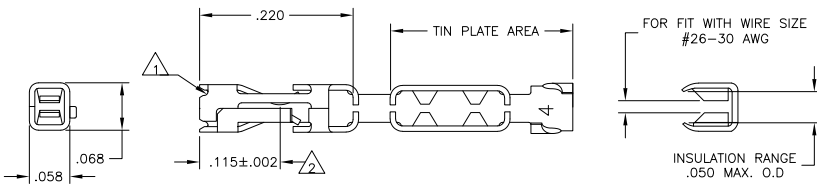
3

2

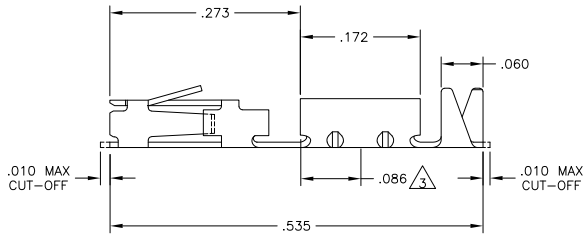
1

THIS DRAWING IS UNPUBLISHED. RELEASED FOR PUBLICATION  
 © COPYRIGHT BY TYCO ELECTRONICS CORPORATION. ALL RIGHTS RESERVED.

LOC	DIST	REVISIONS			
P	LTR	DESCRIPTION	DATE	BY	APP'D
C	EC	063C 0650 04	10MAR05	BSV	DFR
C1		REVISED PER ECO-09-020774	24AUG09	KK	AEG



- △1 CUT OUTS ON BOX AT MANUFACTURER'S OPTION
- △2 POINT OF MEASUREMENT FOR PLATING THICKNESS (INSIDE BEAMS)
- △3 POINT OF MEASUREMENT FOR PLATING THICKNESS (OUTSIDE BOTTOM)
- △4 ROHS 2002/95/EC COMPLIANT
- △5 OBSOLETE PARTS: OBSOLETE CIS STREAMLINING PER D.RENAUD/D.SINISI



△4	.000030 GOLD IN CONTACT AREA, .000050 MIN TIN IN AREA SHOWN, ALL OVER .000030 NICKEL.	5-102641-6
△5 SUPERSEDED	.000030 GOLD IN CONTACT AREA, .000050 MIN TIN-LEAD IN AREA SHOWN, ALL OVER .000030 NICKEL	102641-3
	PLATING	PART NO LOOSE PIECE

THIS DRAWING IS A CONTROLLED DOCUMENT.		DR. S.S. VISWESWARA	10MAR05	Tyco Electronics Corporation Harrisburg, Pa 17105-3608	
DIMENSIONS: INCHES		D. F. RICHIE	NAME	CONTACT-MOD IV MASS TERMINATION AMPMODU HIGH PRESSURE #26-30 AWG WIRE SIZE	
MATERIAL: PHOS. BRONZE		FINISH: SEE TABLE	APPLICATION SPEC:	SIZE: A2	CAGE CODE: 00779
			WEIGHT:	DRAWING NO: C=102641	RESTRICTED TO: -
				CUSTOMER DRAWING	SCALE: 10:1 SHEET 1 OF 1 REV C1

AMP 1471-9 REV 31MM2000

102641

A