

4

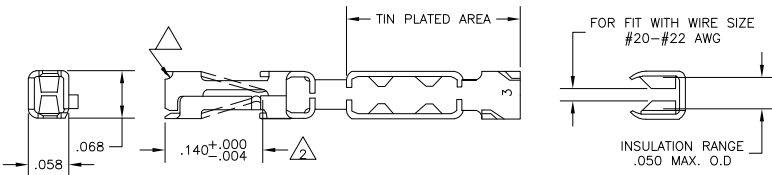
3

2

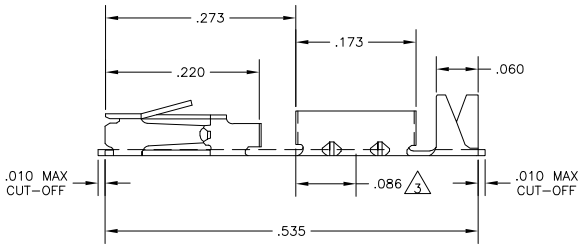
1

THIS DRAWING IS UNPUBLISHED. RELEASED FOR PUBLICATION
 © COPYRIGHT BY TYCO ELECTRONICS CORPORATION. ALL RIGHTS RESERVED.

LOC	DIST	REVISIONS		
AD	00	P	LTR	
		E	EC 063C 0645 04	DATE: 10MAR05
				MIN: BSV
				APPD: DFR



- △ 1 CUT OUTS ON BOX AT MANUFACTURER'S OPTION
- △ 2 POINT OF MEASUREMENT FOR PLATING THICKNESS (INSIDE BEAMS)
- △ 3 POINT OF MEASUREMENT FOR PLATING THICKNESS (OUTSIDE BOTTOM)
- △ 4 ROHS 2002/95/EC COMPLIANT



.000030 GOLD IN CONTACT AREA, .000050 MIN TIN IN AREA SHOWN, ALL OVER .000050 NICKEL.	5-104449-6
.000030 GOLD IN CONTACT AREA .000050 MIN TIN-PLATED IN AREA SHOWN, ALL OVER .000050 NICKEL	102449-3
PLATING	PART NO LOOSE PIECE

THIS DRAWING IS A CONTROLLED DOCUMENT.		DIB: S.S. VISWESWARA		10MAR05		Tyco Electronics Corporation	
DIMENSIONS: INCHES		D. F. RHODE		NAME		Harrisburg, Pa 17105-3608	
OTHER DIMENSIONS: MILLIMETERS		PRODUCT SPEC		APPLICATION SPEC		SIZE: A2	
MATERIAL		FINISH		WEIGHT		CAGE CODE: 00779	
						DRAWING NO: 102449	
						RESTRICTED TO: E	
						CUSTOMER DRAWING	
						SCALE: 10:1	
						SHEET: 1 OF 1	
						REV: E	