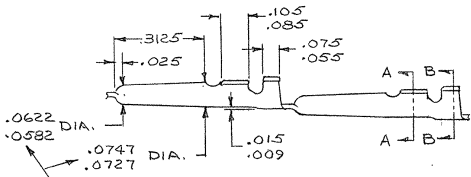
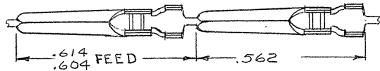
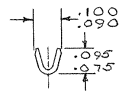


© 192BY AMP INCORPORATED. ALL RIGHTS RESERVED. AMP PRODUCTS COVERED BY PATENTS AND/OR PATENTS PENDING. APPROVED PER GOVT CONTRACT NO.

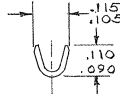


OUT OF ROUND NOT TO EXCEED TOLERANCE ON DIMENSIONS.

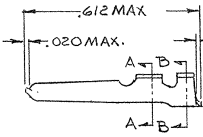
STRIP



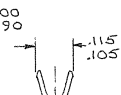
SECT. A-A



SECT. B-B

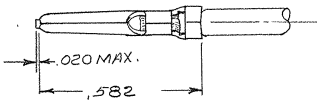


SECT. A-A



SECT. B-B

LOOSE PIECE



CRIMPED VERSION.

REVISIONS					
SYM	ZONE	DESCRIPTION	DATE	APPROVAL	
D		REDRAWN.	U309	11-15-62	JL
E	B.1	REVISED CRIMP HEIGHT	U375	12-3-63	JL
F		REVISED	U-670	2-7-63	M.S. JL
G		REVISED	U-925	1-16-64	M.S. J.S.H.
H		PRINT DIST WAS .39" LOC WAS .48"	3387	10-25-60	L.O.
J	B.1	ADDED TOOL NOS AND PRODUCT SPEC. 108-9203, ECN 419	11-3-76		C.F.R.
K		OBSOLETE 66140-3, 66141-3	EA 1049	1-11-79	D.J.H.
L		REVISED PLATING	EA 1515	8-5-80	D.S.
M		BRIGHT TIN-LEAD WAS BRIGHT TIN	EA 1818	6-16-81	D.S.
N		REVISED GOLD PLATING	EA 2139	6-17-82	D.S.
R		OBS 66141-2	ECN 53379	11-19-86	R.S.
S		OBS 66140-2	ECN 53940	4-24-87	R.S.
S		OBS 66141-4	ECN DF-0521	9-26-88	M.R.
T		REVISED PER OH14-0139-05	T.W.	7-26-06	PY R.G.

I. FOR ADDITIONAL SPECIFICATIONS SEE AMP PRODUCT SPEC. 108-9203. OBSOLETE PART NO.

5-66140-1	5-66141-1	24-20	.048-.071	.0001	MATTE TIN OVER NICKEL	811034-2	90119	.040
66140-4	66141-4	24-20	.048-.071	.00003	GOLD OVER .00005 NICKEL	811034-2	90119	.040
66140-3	66141-3	24-20	.048-.071	.0002	SILVER	811034-2	90119	.040
66140-2	66141-2	24-20	.048-.071		NONE	811034-2	90119	.040
66140-1	66141-1	24-20	.048-.071	.0001	BRIGHT TIN-LEAD OVER NICKEL	811034-2	90119	.040
STRIP PART NO.	LOOSE PIECE PART NO.	WIRE GAGE RANGE	INSULATION DIA RANGE	PLATING		INSERTION TOOL	HAND TOOL	CRIMP HEIGHT

AMP INFO		QTY	NOMENCLATURE OR DESCRIPTION	PART OR IDENTIFYING NO
LOC	PRINT	REQD		
3	DF			
LIST OF MATERIALS OR PARTS LIST				
OTHERWISE SPECIFIED		SIGNATURE		DATE
DIMENSIONS ARE IN INCHES		DR: <i>J. Kambou</i>		11/15/62
TOLERANCES ON		CHK: <i>J. Kambou</i>		11/15/62
FRACTIONS = 1/16		DESIGN ENGR: <i>J. Kambou</i>		11-19-62
DECIMALS = .010		APPROV: <i>J. Kambou</i>		11/15/62
ANGLES = A		DESIGN APPD:		
MATERIAL		OTHER APPD:		
.016 COML. BRASS		CODE IDENT NO		00779
HEAT TREAT		SIZE		C
--		NUMBER		66140
FINISH		SCALE		4:1
SEE TABLE		WT		CALC
		ACTUAL		SHEET
		OF		1



AMP INCORPORATED
HARRISBURG, PENNSYLVANIA

PIN, TAPER, INSULATION SUPPORT
61 SERIES, FORMED

CUSTOMER DRAWING