

4

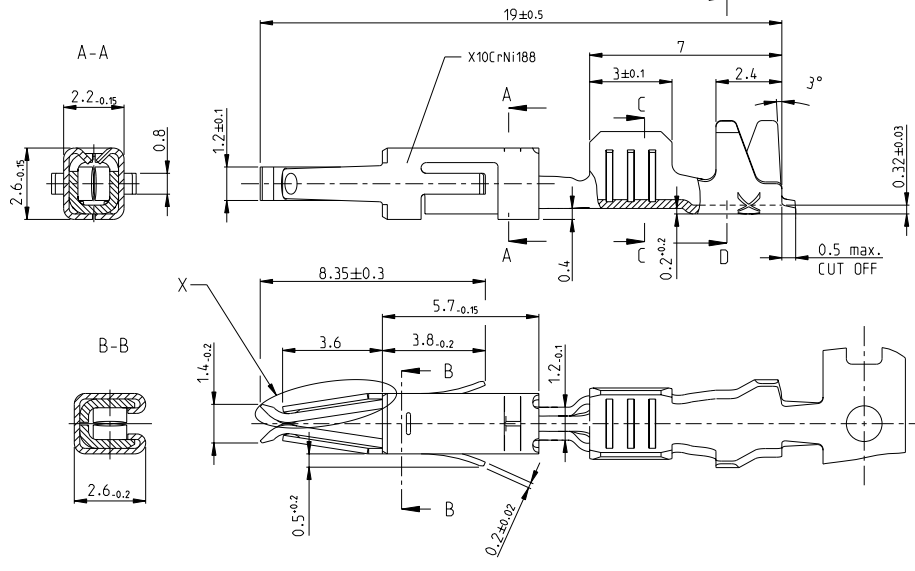
3

2

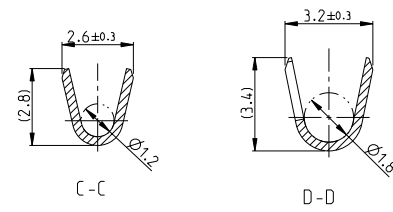
1

THIS DRAWING IS UNPUBLISHED. RELEASED FOR PUBLICATION 2008 BY TYCO ELECTRONICS CORPORATION. ALL RIGHTS RESERVED. COPYRIGHT 2008

KONVENTIONELL



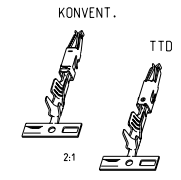
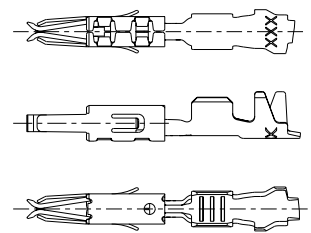
REV	DATE	BY	APPV
J2	01.04.08	Bers	
J3	15.08.05	Kone	
K	03AUG08	Adr	Brum
K1	06APR09	Adr	Brum



NOTES  
Bemerkungen

- 1 SELECTIVE GOLD PLATED MIN. 0.8 µm OVER NI  
selektiv vergoldet 0.8 µm ueber Ni
- 2 TIN PLATED MIN. 0.2 µm OVER NI  
verzinkt 0.2 µm ueber Ni
- 3 CONTACT SURFACE SEL. GOLD PLATED MIN. 0.8 µm OVER NI  
CANTILEVER SPRING COMPLETELY GOLD PLATED ON BOTH SIDES  
sel. vergoldet auf der Kontaktoberseite 0.8 µm min. ueber Ni  
Ueberfeder komplett auf beiden Seiten vergoldet
- 4 WIRE RANGE : 0.5 - 1.0 mm<sup>2</sup>  
INSULATION-Ø : 1.4 - 2.0 mm (FLR)  
Drahtgrosessebereich : 0.5 - 1.0 mm<sup>2</sup>  
Isolations-Ø : 1.4 - 2.0 mm (FLR)

TWO TRACK DIE  
M 5:1



SINGLE CRIMP Einzelanschlag	DOUBLE CRIMP Doppelanschlag		WITH mit			
	OFF / VON		0.2	0.35	0.5	1.0
		0.2		X		
X		0.35	X		X	
X		0.5		X		
X		1.0			X	

VERSION	LP NO	SURFACE / Oberflaeche	MATERIAL	PART NO	REV
△	962945-6	△△△	Cu50Ni	962943-6	K
△	962945-5	△△△	CuFe2	962943-5	K
△	962945-4	△△△	Cu50Ni	962943-4	K
△	962945-3	△△	Cu50Ni	962943-3	K
△	962945-2	△△	CuFe2	962943-2	K
△	962945-1	△△	Cu50Ni	962943-1	K

TYCO ELECTRONICS CORPORATION  
114-18081

DATE: 06 JUN 1989  
BY: R. Hofer  
CHKD: H. Gebhrke  
APPD: 03AUG1992

NAME: Bleicher  
PRODUCT SPEC: 108-16386  
APPLICATION SPEC: 114-18081

WEIGHT: 0.3 g  
CUSTOMER DRAWING

Two Electronics AMP GmbH  
64625 Bensheim (Germany)

MICRO TIMER 2 CONTACT  
WITH DOUBLE LOCKING LANCE  
mit doppelter Rasifeder

SCALE: 10:1  
SHEET 1 OF 1  
REV K1