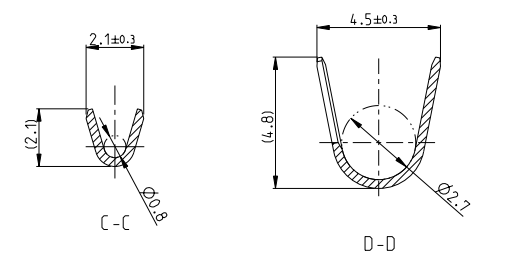
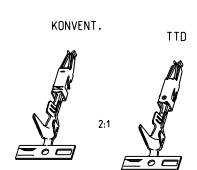


LOC	DIST	REVISIONS			
P	LYA	DESCRIPTION	DATE	DNW	APPRO
M1		Zeichnung ueberarbeitet	01.04.08	Bers	
M2		Spring Dimple modified	16.08.05	Kone	
N		OPTION FOR TTD VERSION ADDED	25-JUN-08	Adr	Brum
N1		DRAWING ADAPTED	06APR2009	Adr	Brum



- NOTES  
Bemerkungen
- 1 SELECTIVE GOLD PLATED MIN. 0.8µm OVER NI  
selektiv verguldet 0.8µm ueber Ni
  - 2 TIN PLATED MIN. 0.2µm OVER NI  
verzinkt 0.2µm ueber Ni
  - 3 WIRE RANGE : 0.2 - 0.5 mm<sup>2</sup>  
INSULATION-Ø: 2.8 mm (SINGLE WIRE SEAL)  
Drahtgrosendbereich: 0.2 - 0.5 mm<sup>2</sup>  
Isolations-Ø: 2.8 mm (Einzeldichtung)



VERSION	LP NO	SURFACE / Oberflaeche	MATERIAL	PART NO	REV
4	963710-5		CuFe2	962875-5	N
4	963710-3		CuSn4	962875-3	N
5	963710-2	PRETIN / vorverzinkt	CuFe2	962875-2	N
5	963710-1	PRETIN / vorverzinkt	CuSn4	962875-1	N

DIMENSIONS: mm		TOLERANCES UNLESS OTHERWISE SPECIFIED		DATE: 05-JAN-89		TYCO ELECTRONICS	
MATERIAL: -		FINISH: -		DW: R. Hofer		Tyco Electronics AMP GmbH	
WEIGHT: 0.3 g		APPRO: M. Bleicher		CEN: 05-APR-89		64625 Bensheim (Germany)	
CUSTOMER DRAWING		PRODUCT SPEC: 108-18386		DATE: 25-JUN-08		NAME: MICRO TIMER 2 CONTACT WITH DOUBLE LOCKING LANCE mit doppelter Rasfeder	
SCALE: 10:1		APPLICATION SPEC: 114-18081		SIZE: A2		DRAWING NO: 00779	
SHEET 1 OF 1		RESTRICTED TO: -		PART NO: 962875		REV: N1	