

4

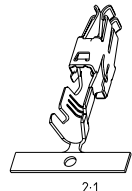
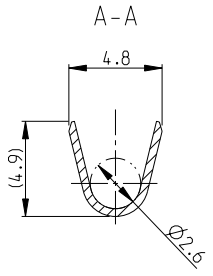
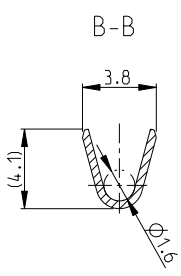
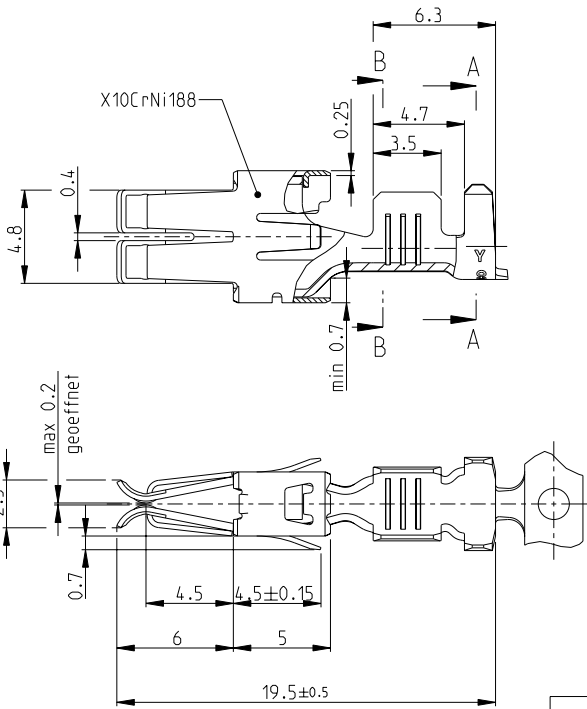
3

2

1

THIS DRAWING IS UNPUBLISHED. RELEASED FOR PUBLICATION 2007
 © COPYRIGHT 2007 BY TYCO ELECTRONICS CORPORATION. ALL RIGHTS RESERVED.

LOC	DIST	REVISIONS			
P	LTR	DESCRIPTION	DATE	DNW	APVD
B		Gap Size 0.15 -0.1	08.02.02	Meierh	-
B1		Gap Size auf geoeffnet max. 0.2 geaendert	08.02.06	Abr	Brun
C		Zeichnung angepasst	28.11.07	Abr	Brun
C1		Stueckliste: falsche PN's berichtigt	30.07.08	Abr	Brun



INSUL. RANGE Ø2.2-3.0 mm	WIRE RANGE >1-2.5 mm ²
--------------------------------	---

DIMENSIONS: mm		TOLERANCES UNLESS OTHERWISE SPECIFIED:	
	±	0-PLC	±
	±	1-PLC	±
	±	2-PLC	±
	±	3-PLC	±
	±	4-PLC	±
	±	ANGLES	±°
MATERIAL	-	FINISH	-

1241826-5	vorversilbert/PRESILVERED	CuFe2	964203-5	C
1241826-4	vorversilbert/PRESILVERED 1-1.5µm	CuSn4	964203-4	C
1241826-3	vorversilbert/PRESILVERED 3-4.5µm	CuSn4	964203-3	C
1241826-2	vorverzinkt/PRETINNED	CuSN4	964203-2	C
1241826-1	vorverzinkt/PRETINNED	CuFe2	964203-1	C
LP NO	FINISH	MATERIAL	PART NO.	REV

OWN ATZMANN CHK BARTOSCH APVD Bleicher, M. PRODUCT SPEC 108-18025 APPLICATION SPEC 114-18037 WEIGHT 0.82 g	06.01.94 18.01.94 28.11.07	 Tyco Electronics AMP GmbH 64625 Bensheim (Germany)	STANDARD POWER TIMER KONTAKT (Gerade Tulpe)	SIZE A3 CAGE CODE 00779 DRAWING NO 964203 RESTRICTED TO -
CUSTOMER DRAWING		SCALE 5:1	SHEET 1 of 1	REV C1