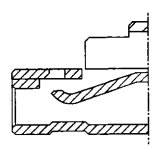
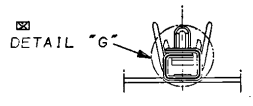


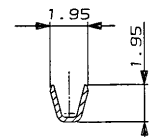
NUMBER C-176759
 METRIC
 DEPT. 704E16R4SHU, 399-7ESSU, CAD, S. 176759, A, 1, C
 PROJ. NO. 399-355
 PRINT DIST.
 ALL DIMENSIONS IN MM. DO NOT SCALE PRINT.
 AMP-J
 REV. 10/89



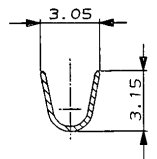
断面
 SECT "A"- "A"
 (SCALE 10-1)



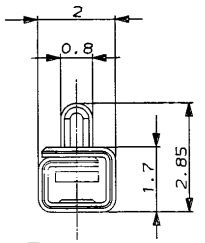
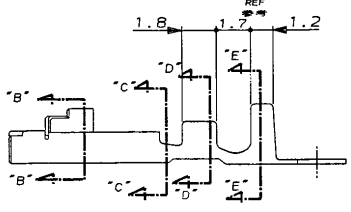
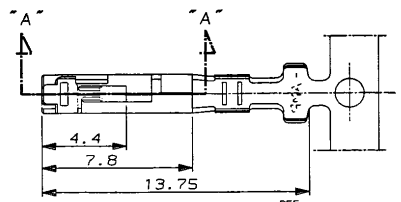
DETAIL "G"



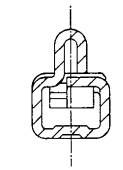
断面
 SECT "D"- "D"



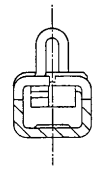
断面
 SECT "E"- "E"



DETAIL "G"
 (SCALE 10-1)



断面
 SECT "B"- "B"
 (SCALE 10-1)



断面
 SECT "C"- "C"
 (SCALE 10-1)

NOTES;

1. SPECIFICATION;
 PRODUCT SPEC ; 108-5315
 APPLICATION SPEC ; 114-5147
2. INSTRUCTION SHEET ; IS-507J
3. LOOSE PIECE P/N ; 176846-1.

注記;

1. 通用規格 ; 108-5315
 製品規格 ; 114-5147
 取付適用規格 ; 114-5147
2. 取扱い説明書 ; IS-507J
3. パラ状コンタクト型番 ; 176846-1

本図
 P/N -1 AS SHOWN.

Copyright © 1990 株式会社 AMP (Japan), LTD. ALL RIGHTS RESERVED.		Copyright © 1990 株式会社 AMP (Japan), LTD. ALL RIGHTS RESERVED.		AMP 東京エレクトロニクス株式会社 Tokyo, Japan	
品名 (NAME) リセプタクル コンタクト、アンプ ライス コネクター RECEPTACLE CONTACT, AMP LATTICE CONNECTOR.		規格 (RANGE) 0.12-0.35mm ² (AWG26-22)		絶縁外径 (INSULATION DIA.) 0.9 - 2 mmφ	
材料 (MATERIAL) BRASS		仕上げ (FINISH) プリティン		一般公差 (GENERAL TOLERANCE) 10mm ⁺ ±0.2 10mm ⁻ ±0.25 30mm ⁺ ±0.3 角 ±0.3	
ECN NO. F200-0525-94 I. E. Y. Y.		ECN NO. J13006 I. E. T. D.		ECN NO. J12859 I. E. S. M.	
A REVISED		O ₂ REVISED		O RELEASED	
DR. F. FUTATSUGI		DE. F. FUTATSUGI		APP. S. MANABE	
LTR 変更 (REVISION RECORD)		DR 作成 (DATE)		CHK. S. MANABE	
REV. A		REV. A		REV. A	
SHEET 1 OF 1		SHEET 1 OF 1		SHEET 1 OF 1	

(CUSTOMER DRAWING) 参考 図面