

HAS C-75-25027

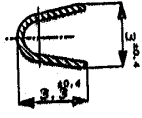
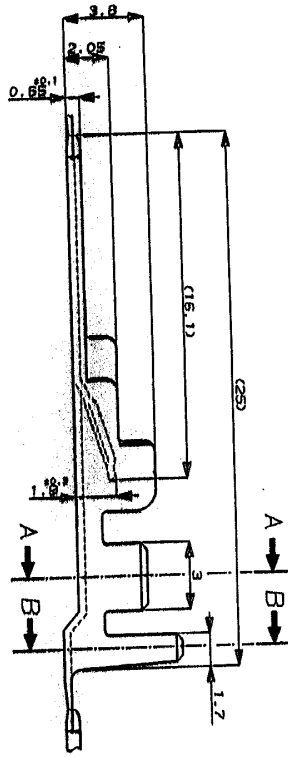
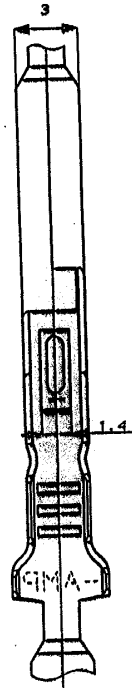
PRINT DIBT

<USERS>DEPT8270>E20501>U.MIC1>U.CONTACT>S.C-170221
 単位: #6 DIMENSIONS IN MM. DO NOT SCALE PRINT

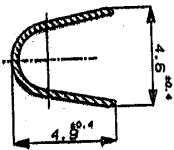
METRIC



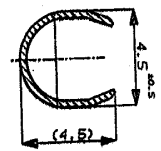
NUMBER
C-170221



断面 A-A
SECT.



170221 のみ適用



断面 B-B
SECT.

170222 のみ適用

| | | | |
|----------|-----------------|----------------------|----------|
| 170222-3 | 実銀 BRASS | 金めっき SOLD PLATING | 170221-4 |
| 170222-4 | リン青銅 PHOS. BRD. | めっき PRE-TINNED | 170221-3 |
| 170222-1 | 実銀 BRASS | めっき PRE-TINNED | 170221-1 |
| | 材料 (MATERIAL) | 仕上 (FINISH) | 型番 (P/N) |

NOTE:
 1. HOUSING PARTS NUMBER 171725, etc.
 2. THE MATING RECEPTACLE CONTACTS PARTS NUMBER 170177, 170285, etc.
 3. PRODUCT SPEC No. 109-5099
 4. APPLICATION SPEC No. 114-5018

注:
 1. 使用ノウハウは、型番171725地
 2. 統合するリセクタブルコントラクトは、
 型番170177, 170285地
 3. 製品規格社 No. 109-5099
 4. 庄産規格社 No. 114-5018

(CUSTOMER DRAWING) 参 考 図 面

AMP
 TOKYO, JAPAN

ホルチインターロッキングコネクタ
 TAB WITH LANE ALL TI-INTERLOCK CONNECTOR
 C-170221
 1 OF 1