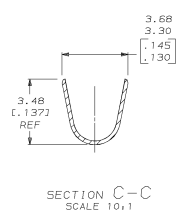
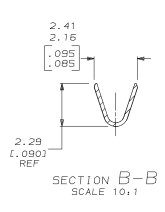
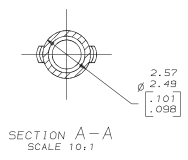
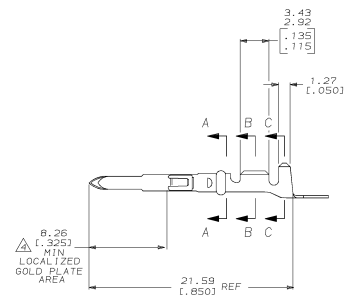
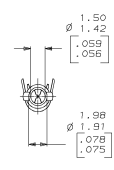
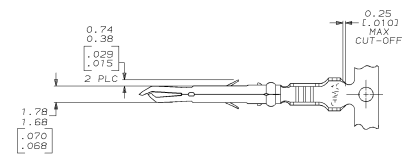


MAKING MADE IN NORTH AMERICA PROJECTION
 THIS DRAWING IS UNPUBLISHED
 RELEASED FOR PUBLICATION
 BY AMP INCORPORATED. ALL INTERNATIONAL RIGHTS RESERVED.

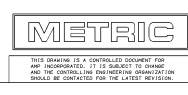
REVOLUTIONS		DESCRIPTION		DATE	APPD
CM	52	REV	REDWN	PER	EC
		J	REV & REDWN	PER EC	0730-0058-55
				3-21-95	ES

- 1 WIRE RANGE; 0.13-0.8mm² (26-18 AWG).
 - 2 INSULATION RANGE; 1.27-2.92 (.050-.115) MAX. DIA.
 - 3 DIMENSIONS IN BRACKETS ARE IN INCHES.
- ⚠ TIP PLATE WITH 0.00075-0.00091 (.000030-.000036) MIN GOLD IN THE LOCALIZED GOLD PLATE AREA OVER 0.00127 (.000050) MIN NICKEL UNDERPLATE.



⚠ GOLD PLATE	0.20 (.008) PHOS BRZ	350969-2
PRE-TIN	0.20 (.008) PHOS BRZ	350969-1

FINISH	MATERIAL	PART NO
DR 3-21-95 C-34RON	AMP Incorporated Harrisburg, PA 17105-3608	
CKR 3-21-95 C-34RON		
APPD 3-21-95 M-LONG	NAME	MR GROUNDING PIN
APPD 3-21-95 M-LONG	PRODUCT SPEC	
FINISH	APPLICATION SPEC	SIZE
SEE TABLE		D 00773
WEIGHT		SCALE
		5:1



AMP 17663 R03 3-95
 07 JAN 1994 10:17:51 AMP23931 2D C:\0708\SEPT13323\AMP23931\U4093-46

CUSTOMER DRAWING