

4

3

2

1

THIS DRAWING IS UNPUBLISHED.

RELEASED FOR PUBLICATION

,1997 .

LOC DS

DIST

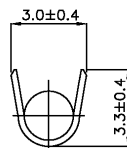
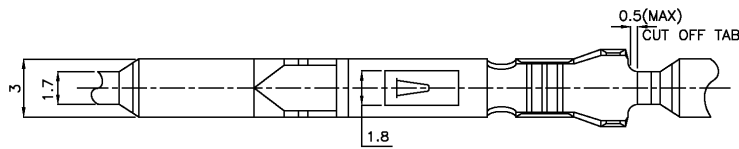
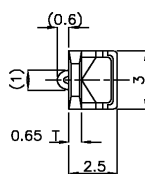
REVISIONS

© COPYRIGHT 1997

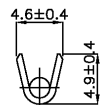
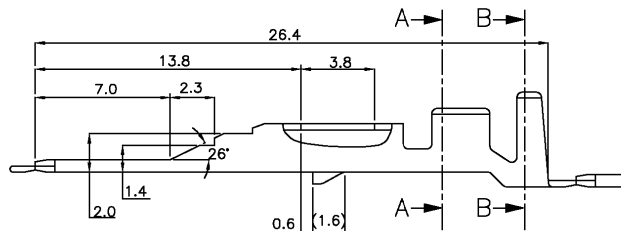
BY AMP KOREA.

ALL RIGHTS RESERVED.

| P | LTR | DESCRIPTION | DATE | DWN | APVD |
|---|-----|--------------|-----------|-----|------|
| 0 | | RELEASED PER | JUL.24'96 | YM | CS |



SECTION B-B



SECTION A-A

* NOTE *

- 1. APPLICABLE REC. P/N : 172775 / 172773
- 2. APPLICABLE HOUSING P/N : 172518. ETC.

| | | |
|----------|---------------|--------|
| 85034-1 | PRE-TIN BRASS | |
| PART NO. | MATERIAL | FINISH |

| | | | | | |
|--|-----------|------------------|-----------|--------------------------------|-----------------------|
| <small>THIS DRAWING IS CONTROLLED DOCUMENT FOR AMP KOREA. IT IS SUBJECT TO CHANGE AND THE CONTROLLING ENGINEERING DEPARTMENT SHALL BE CONTACTED FOR THE LATEST REVISION.</small> | | DWN | YM CHOI | AMP KOREA. kyungsan, korea. | |
| DIMENSIONS: MM | | CHK | JK SONG | | |
| TOLERANCES UNLESS OTHERWISE SPECIFIED: 0 XXXX10 ± 0.2 10XXXX30 ± 0.25 30XXXX100 ± 0.3 ANGLES ± 3° | | APVD | CS LEE | | |
| | | PRODUCT SPEC | 108-61003 | | |
| MATERIAL | SEE TABLE | FINISH | SEE TABLE | NAME | MIC MK-II TAB CONTACT |
| | | APPLICATION SPEC | 114-61001 | SIZE | A3 |
| | | WEIGHT | | CAGE CODE | 00779 |
| | | | | DRAWING NO | 8 5 0 3 4 |
| | | | | SCALE | 5/1 |
| | | | | SHEET | 1 OF 1 |
| | | | | REV | 0 |

AMP 1470-19 REV 09MAY94