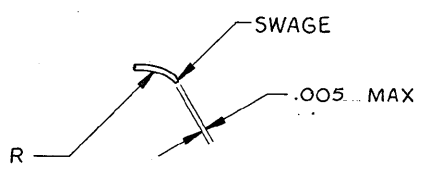
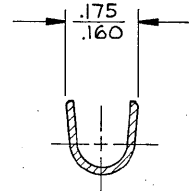
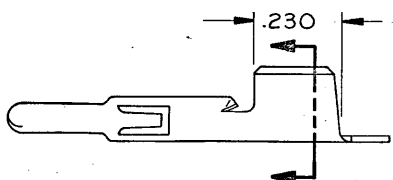
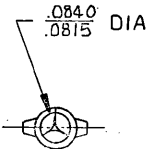
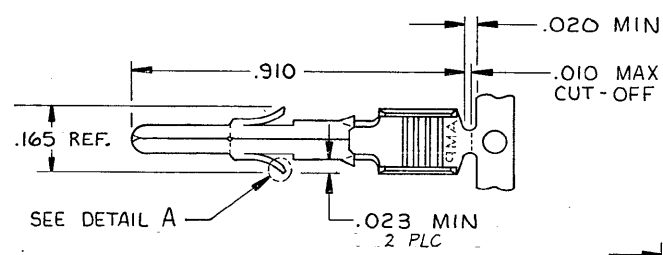


DRAWING MADE IN THIRD ANGLE PROJECTION

THIS DRAWING IS UNPUBLISHED. RELEASED FOR PUBLICATION
 © COPYRIGHT 19 BY AMP INCORPORATED, HARRISBURG, PA. ALL INTERNATIONAL RIGHTS RESERVED. AMP PRODUCTS MAY BE COVERED BY U.S. AND FOREIGN PATENTS AND/OR PATENTS PENDING.

P		F		ZONE		LTR		REVISIONS		DATE	APPROVED
✓								O	REL PER PR CM 86-55 WAS 1516-85-63	11-17-86	KW / RS
								A	REVISED PER CM-3286	2-7-91	RS / RS
								B	REV PER EC 0730-3607-91	1-7-94	RV / RS
								C	REV PER EC 0730-0141-94	7-25-94	RV / RS



1. WIRE RANGE : 12 - 10 AWG.
2. INSULATION RANGE : .200 DIA MAX.

770234-3
PART NO

UNLESS OTHERWISE SPECIFIED DIMENSIONS ARE IN INCHES. TOLERANCES ON: DECIMALS ± .010 ANGLES ±	CONTRACT NO	AMP INCORPORATED Harrisburg, Pa.	
	DR. <i>R. White</i> 11-17-86 CHK. <i>R. Shwing</i> 11-17-86 APPR. <i>R. Larson</i> 11-24-86 APPD -	NAME PIN, GROUNDING, UNIVERSAL MATE-N-LOK™	
MATERIAL PH BRZ	OSGN APPD	SIZE B	FSCM NO 00779
FINISH PRE-TIN	OTHER APPD	DRAWING NO 770234	
		SCALE 4:1	SHEET

CUSTOMER DRAWING