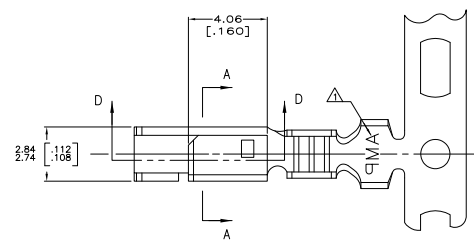
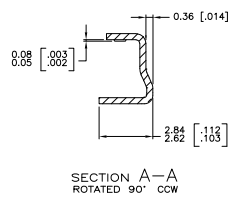
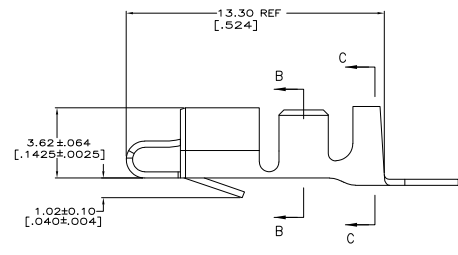
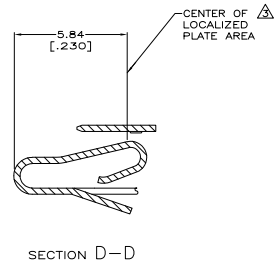


| REV | DATE | DESCRIPTION              | BY | CHK | APP          |
|-----|------|--------------------------|----|-----|--------------|
| CM  | 0    |                          |    |     |              |
| C   |      | REVISED PER 0238-1213-04 |    |     | 9/9/06 SS JE |



- INSULATION RANGE: 1.78-2.84 [0.070-.112]  
 WIRE RANGE: NOT TO EXCEED 2550-2800 CMA (1.29-1.42 mm<sup>2</sup>)  
 (LIMITED 16 AWG RANGE).
- 0.00203 [0.00080] MIN BRIGHT TIN-LEAD OVER  
 0.00127 [0.00050] MIN NICKEL.
- 0.00076 [0.00030] MIN THICK GOLD STRIPES IN  
 LOCALIZED PLATE AREA ON BEAM AND DIMPLE OVER  
 0.00127 [0.00050] MIN THICK NICKEL OVER ENTIRE  
 CONTACT.
- DIMENSIONS IN BRACKETS ARE IN INCHES.
- FOR USE ONLY WITH LID STYLE HOUSING.
- 0.00203 [0.00080] MIN BRIGHT TIN OVER  
 0.00127 [0.00050] MIN NICKEL.



|  |        |      |           |    |        |            |        |
|--|--------|------|-----------|----|--------|------------|--------|
| THIS DRAWING IS A CONTROLLED DOCUMENT. |        | DATE | 11-4-2004 | BY | PH BRZ | REVISED BY | PH BRZ |
| DESIGNED                               | PH BRZ | DATE | 11-4-2004 | BY | PH BRZ | REVISED BY | PH BRZ |
| CHECKED                                | PH BRZ | DATE | 11-4-2004 | BY | PH BRZ | REVISED BY | PH BRZ |
| APPROVED                               | PH BRZ | DATE | 11-4-2004 | BY | PH BRZ | REVISED BY | PH BRZ |
| SEE TABLE                              |        | DATE | 11-4-2004 | BY | PH BRZ | REVISED BY | PH BRZ |
| CUSTOMER DRAWING                       |        | DATE | 11-4-2004 | BY | PH BRZ | REVISED BY | PH BRZ |

|            |        |
|------------|--------|
| 3-647466-1 | FINISH |
| 647466-2   | FINISH |
| 647466-1   | FINISH |
| 647466-1   | FINISH |

|   |            |        |        |
|---|------------|--------|--------|
| SL-156 HOODED RECEPTACLE,<br>LARGE WIRE CONTACT | REVISED BY | PH BRZ |        |
| DATE  | 11-4-2004  | BY     | PH BRZ |
| DATE  | 11-4-2004  | BY     | PH BRZ |
| DATE  | 11-4-2004  | BY     | PH BRZ |
| DATE  | 11-4-2004  | BY     | PH BRZ |