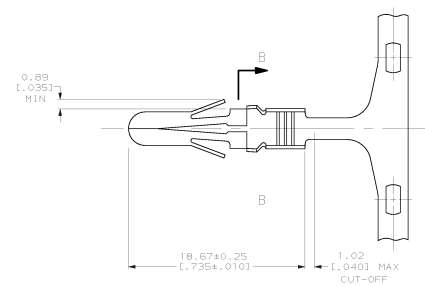
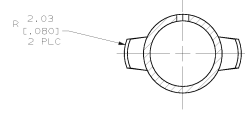
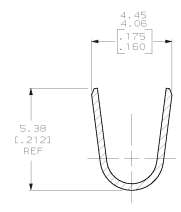
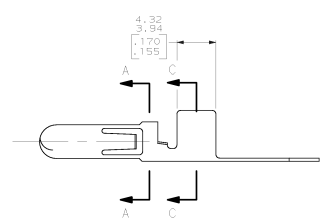
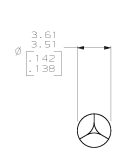


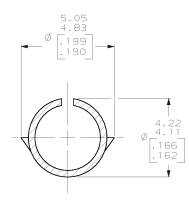
REV. NO.		DATE		DESCRIPTION	
CM	53			D	REV PER EC DS18-0102-98



1. WIRE RANGE: 2 - 6 mm² [14-10] AWG.
2. TO BE USED IN HOUSING P/N 770464-1 ONLY.
3. DIMENSIONS IN BRACKETS ARE IN INCHES.



SECTION A-A
SCALE 10:1



SECTION B-B
ROTATED 90° CCW
SCALE 10:1

SECTION C-C
SCALE 10:1



DO NOT SCALE PRINT. UNLESS SPECIFIED DIMENSIONS IN MM (INCHES) TOLERANCES ON: 3 PLC DEC # 0.13 (0.005) 2 PLC DEC # # HOLE # # MATERIAL 0.36 (.014) BRASS		BY K. WHITAKER 12-20-88 CHK G. SWING 12-21-88 APP'D G. BROWN 12-21-88 CHECKED SPEC	AMP INCORPORATED Harrisburg, Pa. 17105 P/N: .140 MATE-N-LOK™
FINISH: PRE-TIN	APPLICATION SPEC:	SIZE: D	PSCR NO: 00779 DRAWING NO: 770484 SCALE: 5:1 SHEET: 1 OF 1

770484-1
PART NO

CUSTOMER DRAWING